

ARTIST

EDUCATE

INSPIRATION

INTEGRITY

**FOREST MEADOW / WELCOME**

INCLUSIVENESS

INNOVATION

EMPOWER

ENGAGED

LEADERSHIP

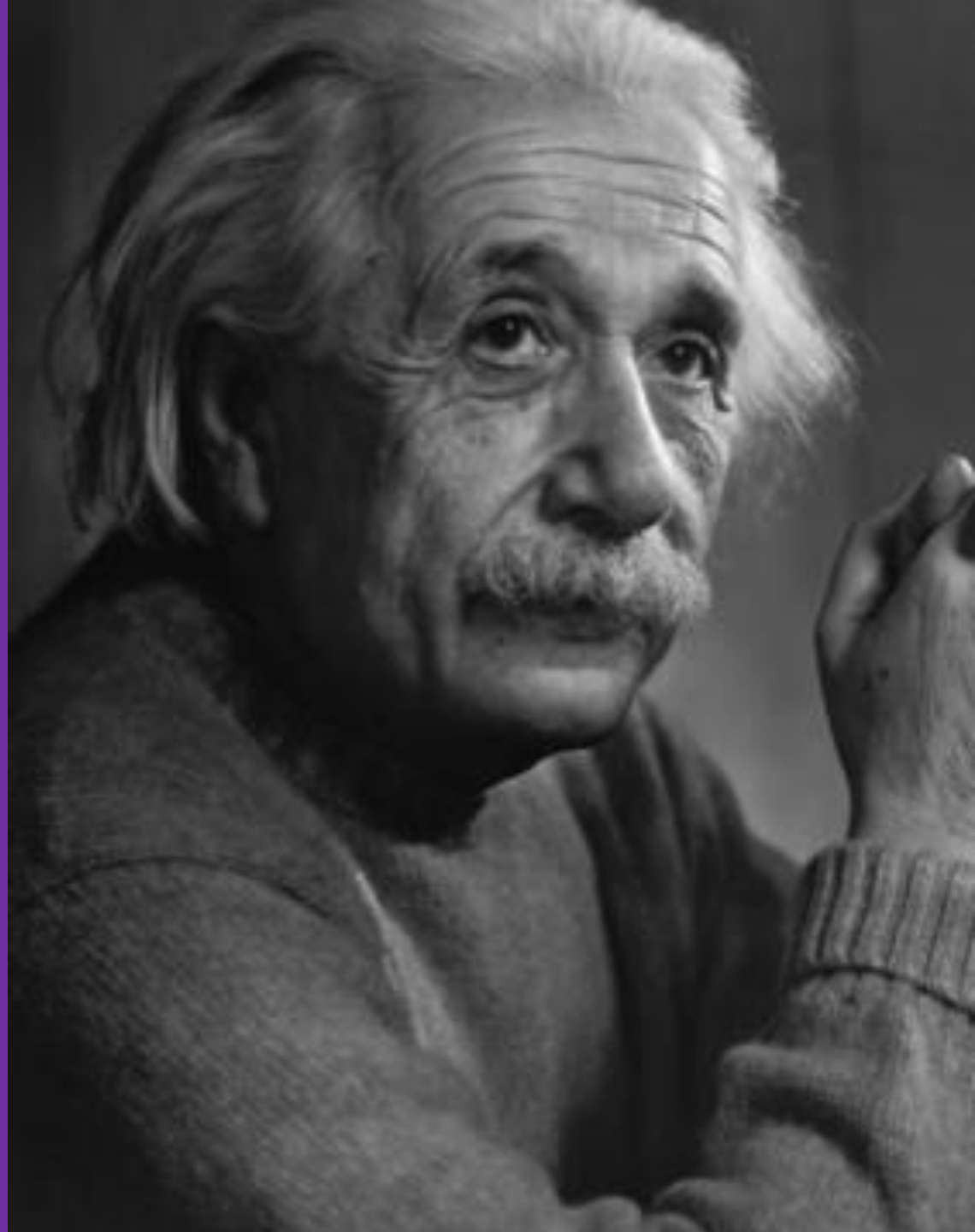
ENABLE

TEAM

APPROACH

**“We can’t solve  
problems by using  
the same kind of  
thinking we used  
when we created  
them.”**

**- Albert Einstein**



# Roles and Responsibilities

---

*What are the goals for this community?*

# History

---

*A moment in time for the Forest  
Meadow Community*



**FOREST MEADOW JUNIOR HIGH SCHOOL**  
9373



# What did the world look like in the 1960's?



# What does the world look like today?



**“WHAT MATTERS MOST IN OUR  
INCREASINGLY INNOVATION-DRIVEN  
ECONOMY IS NOT WHAT YOU KNOW,  
BUT WHAT YOU CAN DO WITH WHAT  
YOU KNOW”**

*Most Likely to Succeed, Preparing our Kids for the Innovation Era*  
Tony Wagner, Ted Dintersmith



# The Mission

---

The Richardson ISD's mission is to challenge and foster lifelong learning necessary to achieve academic, social and career success for all students while acknowledging all personal and cultural diversity.

“65% OF TODAY’S  
GRADE SCHOOL  
KIDS WILL END UP  
AT JOBS THAT  
HAVEN’T BEEN  
INVENTED YET.”

U.S. Department of Labor



Robot Polishers  
Chief Productivity Officer  
Alternative Currency Bankers  
Drones Manager Automation Skills-Building  
3D Printing Engineers  
Self-driving Car Mechanic  
Robot Engineer AI Energy Distribution  
Avatar Geoengineers  
Designers Organ Agents  
Robotic Coders Drone Dispatchers  
Virtual Reality Designer  
Food-Printing Engineer  
Earthquake Forecasters  
Professional Triber

# How to Build a 21<sup>st</sup> Century Student

- Know more about the world
  - Be global citizens
- Think outside the box
  - Premium on creative and innovative skills
  - Think across disciplines (that's where the breakthroughs occur)
- Become smarter about new sources of information
  - Data - know how to manage, interpret, validate, act on
- Develop good people skills
  - EQ important as IQ

# The Six C's of Education



## Character

Character refers to qualities of the individual essential for being personally effective in a complex world including: grit, tenacity, perseverance, resilience, reliability, and honesty.



## Citizenship

Thinking like global citizens, considering global issues based on a deep understanding of diverse values with genuine interest in engaging with others to solve complex problems that impact human and environmental sustainability.



## Collaboration

Collaboration refers to the capacity to work interdependently and synergistically in teams with strong interpersonal and team-related skills including effective management of team dynamics, making substantive decisions together, and learning from and contributing to the learning of others.



## Communication

Communication entails mastery of three fluencies: digital, writing, and speaking tailored for a range of audiences.



## Creativity

Having an 'entrepreneurial eye' for economic and social opportunities, asking the right questions to generate novel ideas, and demonstrating leadership to pursue those ideas into practice.

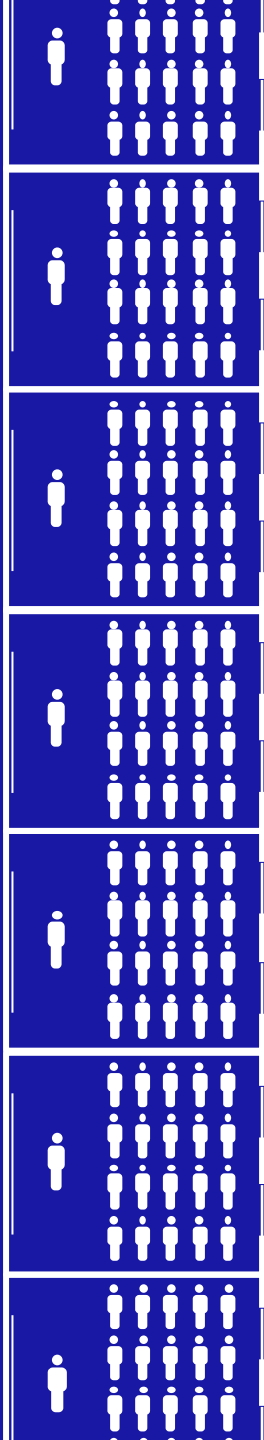
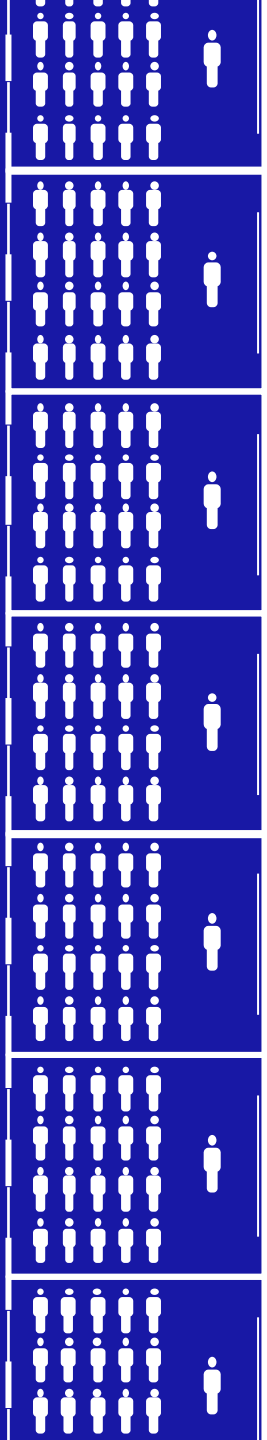
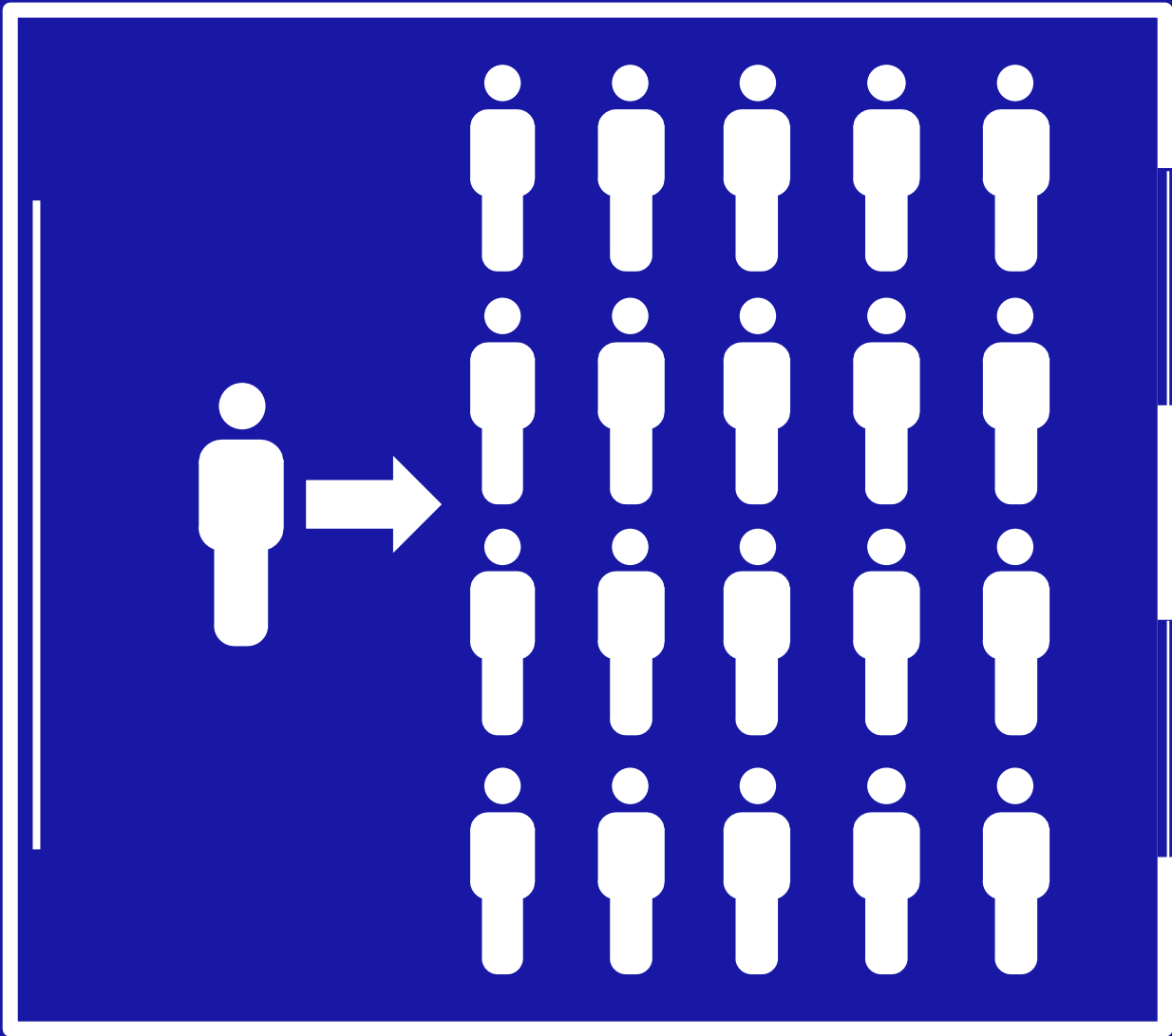


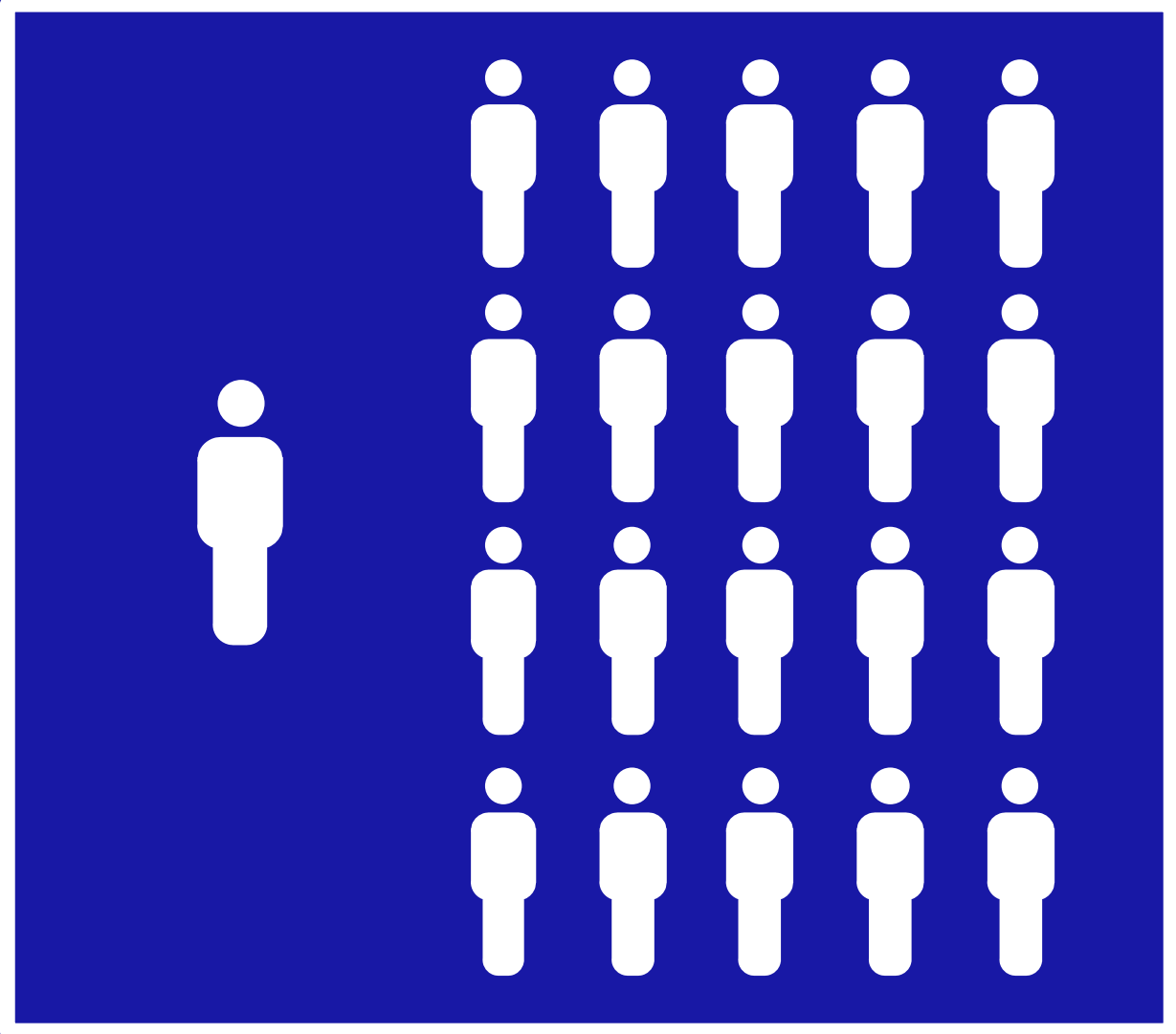
## Critical Thinking

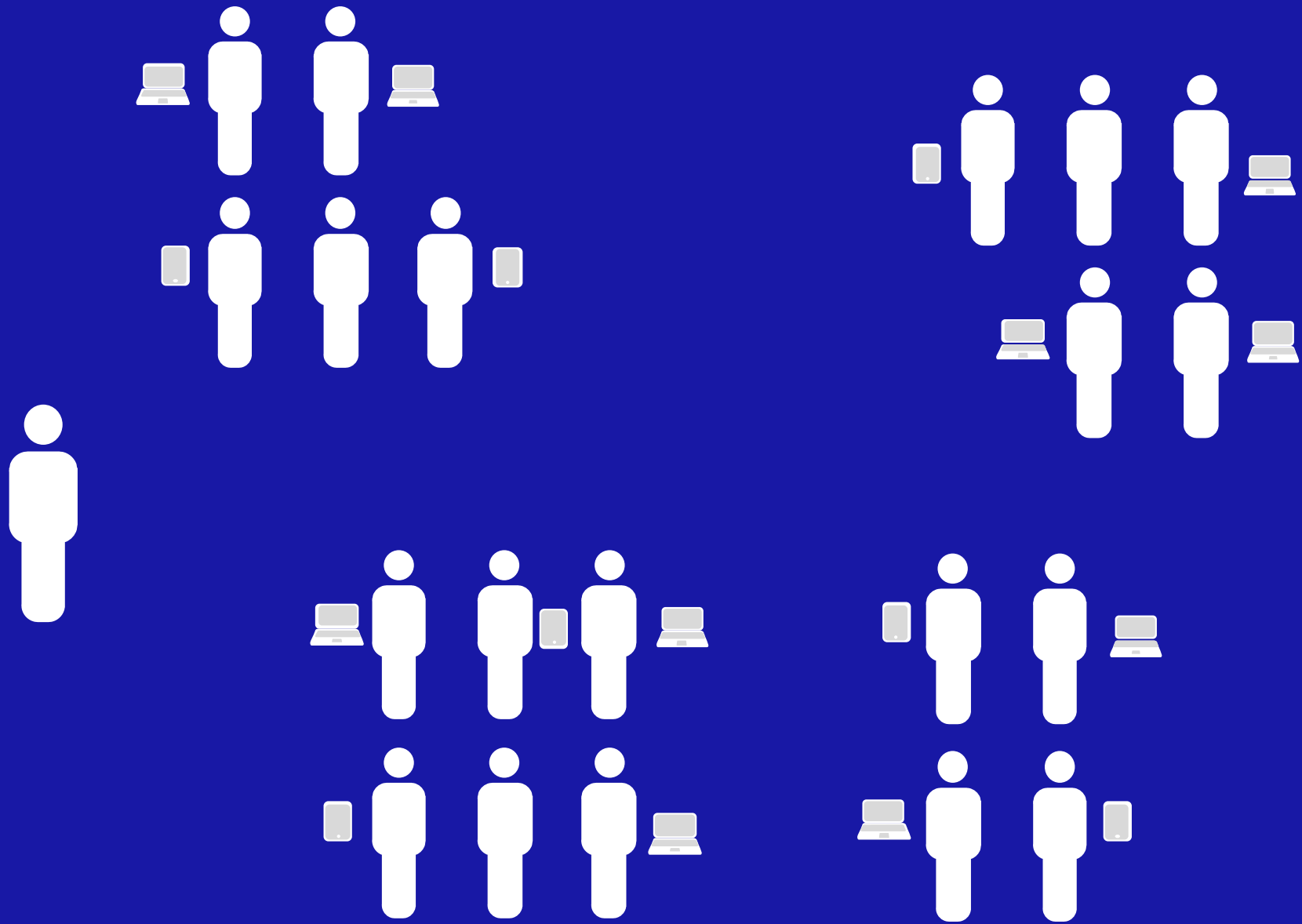
Critically evaluating information and arguments, seeing patterns and connections, construction meaningful knowledge and applying it in the real world.

# Future Ready School

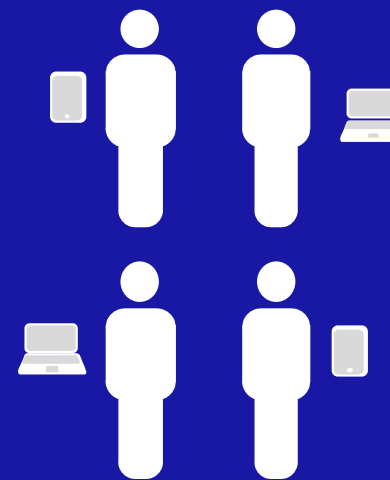
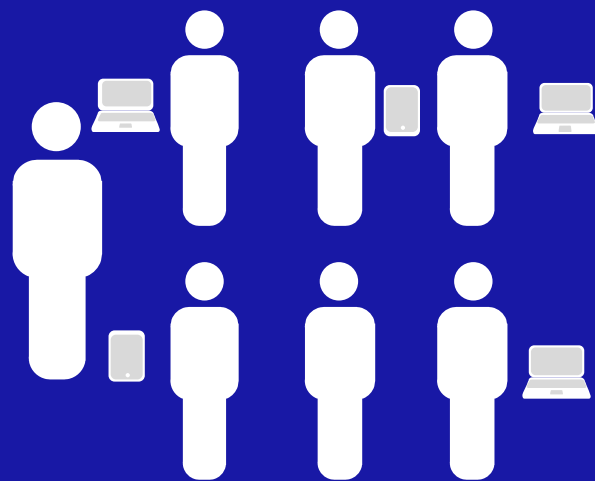
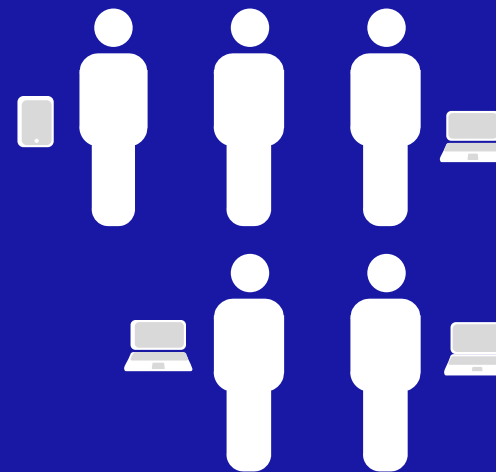
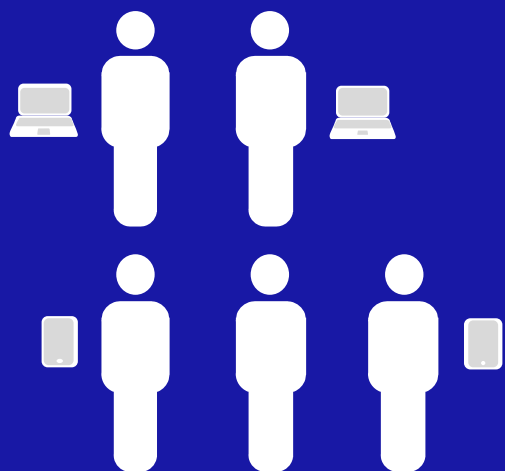
---

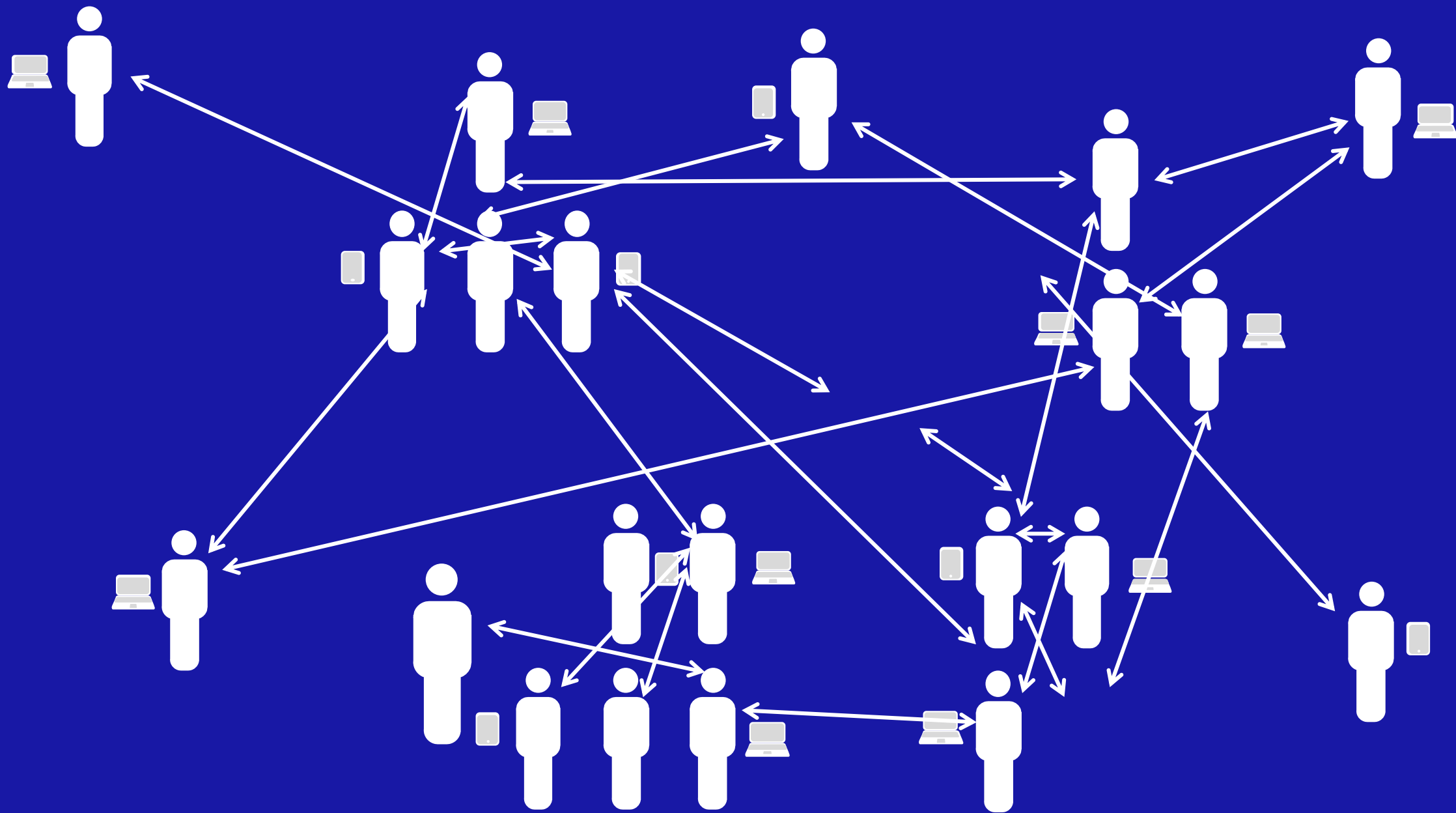












## Future Ready Schools: Provide Flexibility and Agility



# Future Ready Schools: Provide Flexibility and Agility



# Future Ready Schools: Provide Flexibility and Agility



# Future Ready Schools: Rethinks The Corridor



# Future Ready Schools: Rethinks The Corridor



# Future Ready Schools: Promotes Collaboration

---





# Future Ready Schools: Promotes Collaboration



# Future Ready Schools: Connected



## Future Ready Schools: Connected



Studies conducted on schools have reported that “daylight” or “full-spectrum lighting” is associated with better work habits, improved academic performance, and more positive attitudes in students.

*“Daylighting,” Healthy Schools Network, Inc. (2005, 2012)*

# Future Ready Schools: Incorporates Views and Daylight



# Future Ready Schools: Sustainable

DREW CHARTER



LEED GOLD CERTIFIED



180 PHOTOVOLTAIC PANELS ON PERFORMING ARTS ROOF

23% OF BUILDING MATERIALS ARE RECYCLED

45% OF MATERIALS ARE REGIONALLY PRODUCED

51% WATER USE REDUCTION WHEN COMPARED TO A STANDARD SCHOOL

ELECTRIC CAR CHARGING STATIONS

LOW VOC EMITTING MATERIALS AND PAINT USED THROUGHOUT

DAYLIGHT IN ALL CORE LEARNING AREAS

23 MAPLE AND OAK TREES RECLAIMED ON SITE TO PRODUCE MILLWORK USED ON THE ATRIUM STAIRS, RAILINGS, AND PERFORMING ARTS



# Future Ready Schools: Reimagine the Media Center



# Future Ready Schools: Reimagine the Media Center



# Future Ready Schools: Connected Spaces for Making





# Future Ready Schools: Connected Spaces for Making



*Please answer the following on your note card and hand in before you leave.*

**What makes Forest Meadow  
Junior High special to the  
community?**

ARTIST

MOTIVATE

**FOREST MEADOW**

**/ THANK YOU**

INTEGRITY

INSPIRATION

INCLUSIVENESS

INNOVATION

CREATE

ENGAGED

PROCESS

CREATIVE

TEAM

APPROACH