

ARTIST

MOTIVATE

INTEGRITY

LAKE HIGHLANDS / WELCOME TO DAY ONE

INSPIRATION

INCLUSIVENESS

INNOVATION

CREATE

ENGAGED

PROCESS

CREATIVE

TEAM

Does this look too small?

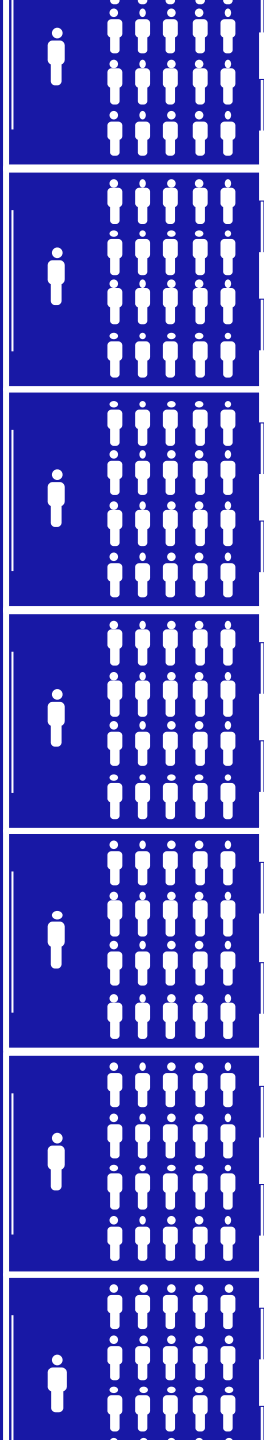
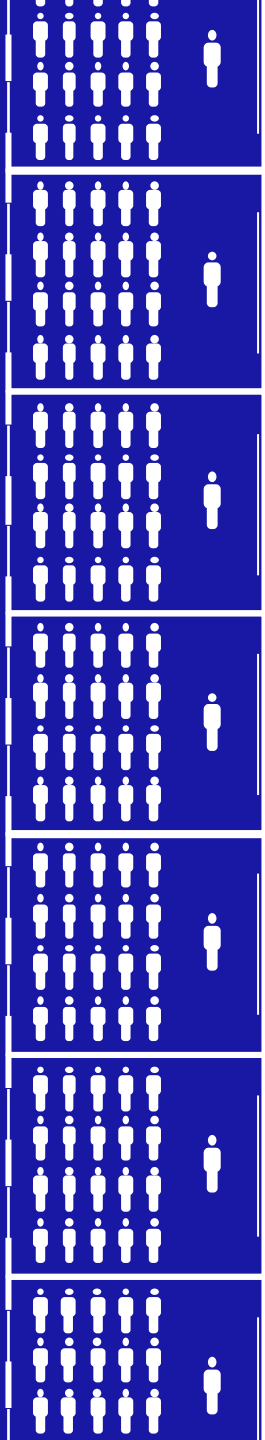
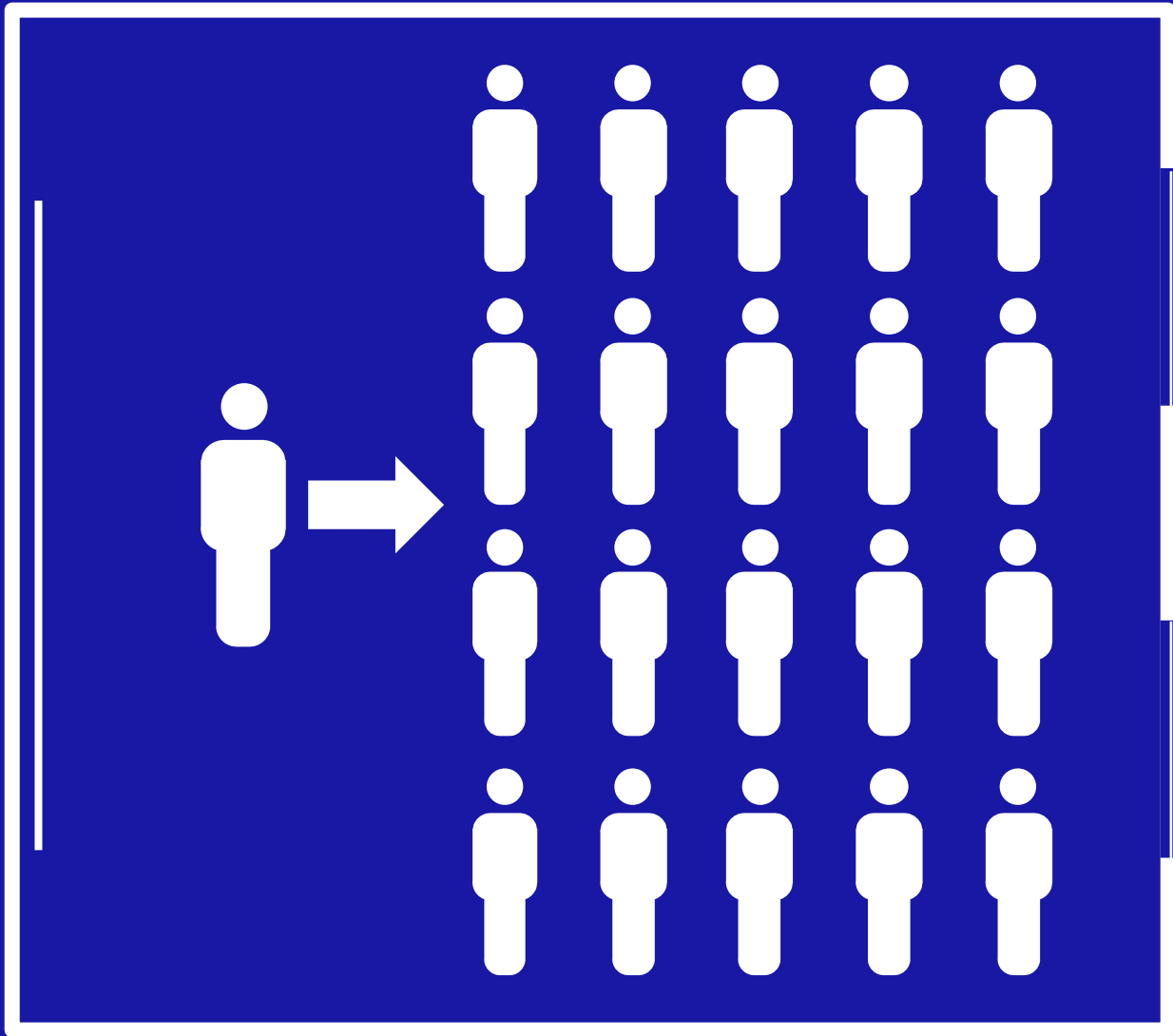
Scale **150%** and click **THE HEART**

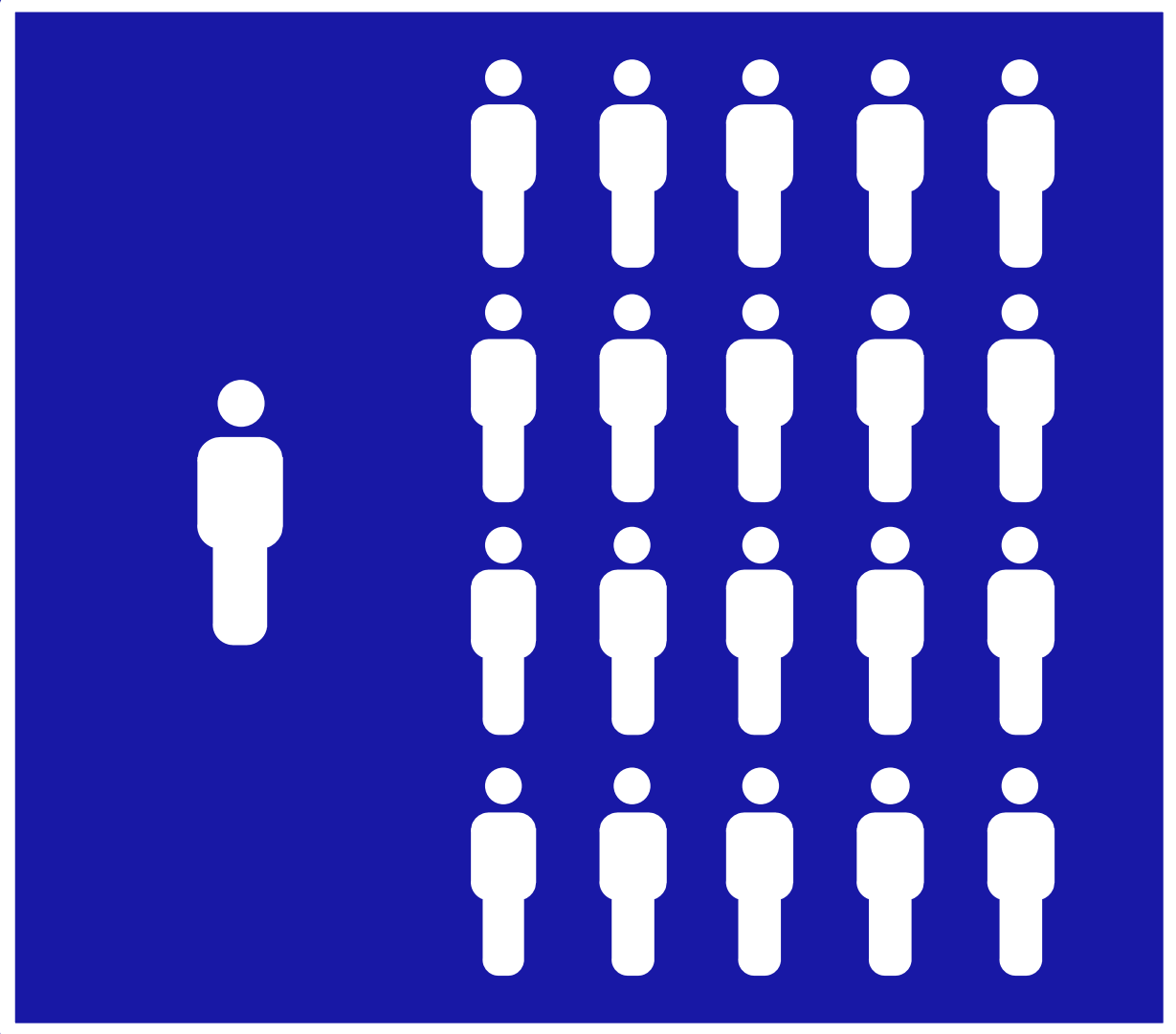
Get ready to **THINK BIG.**

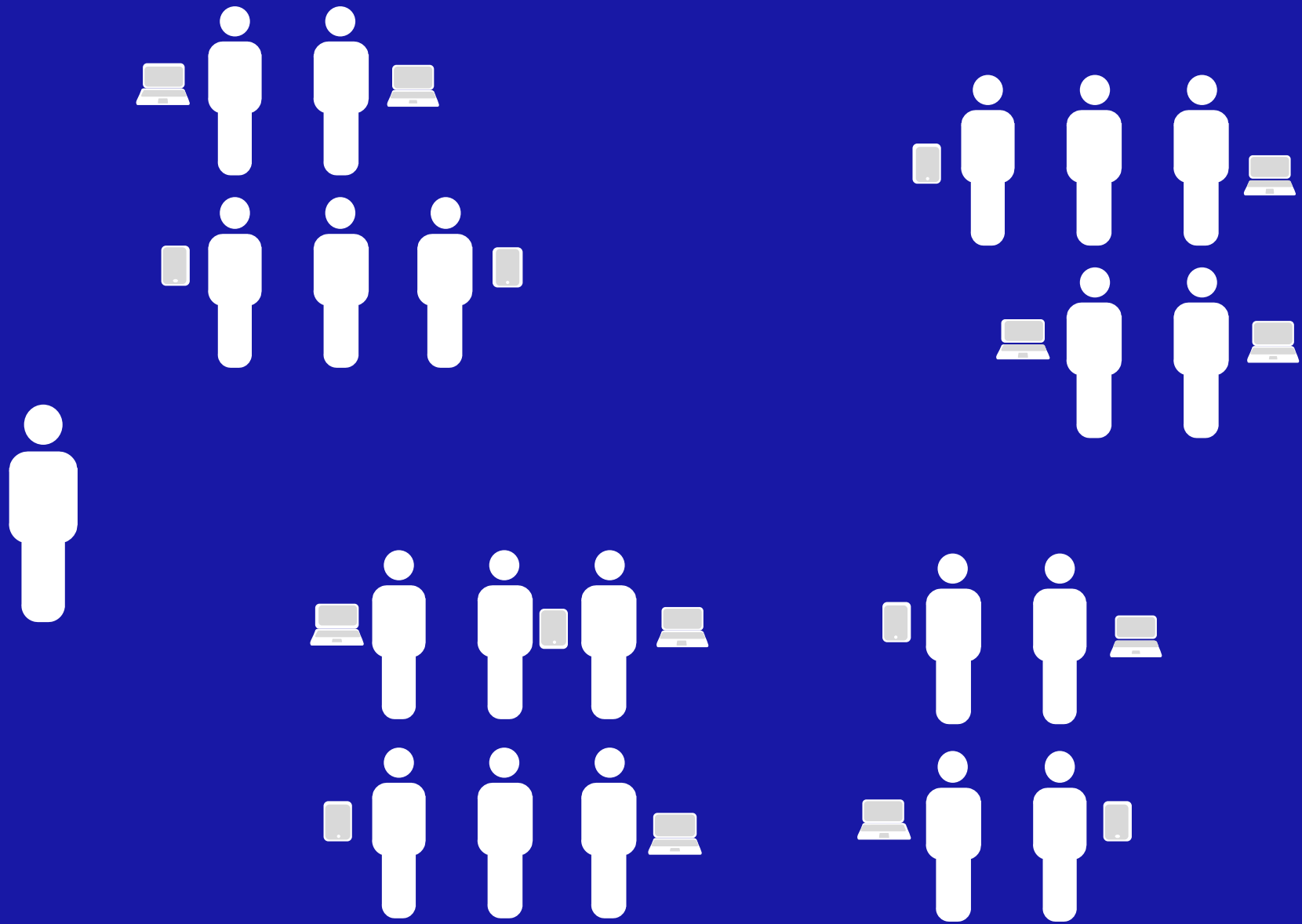


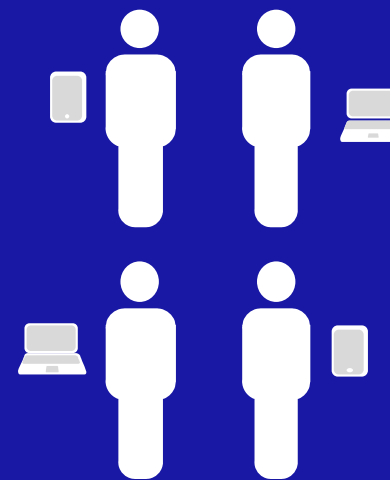
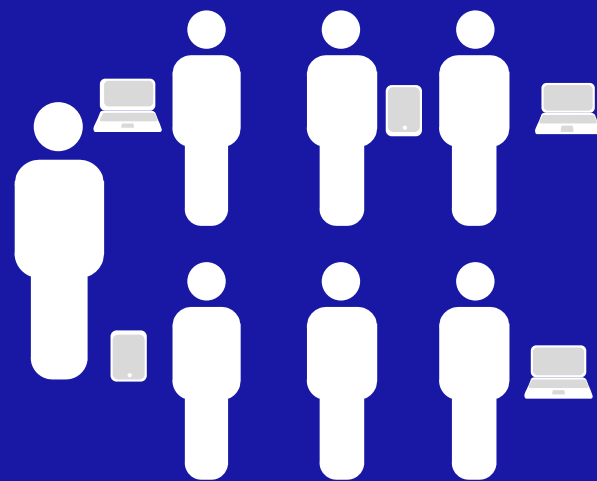
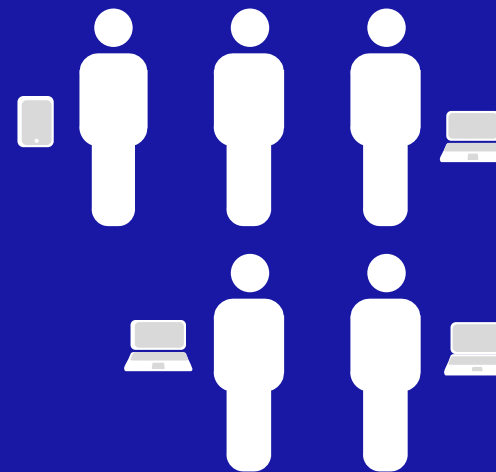
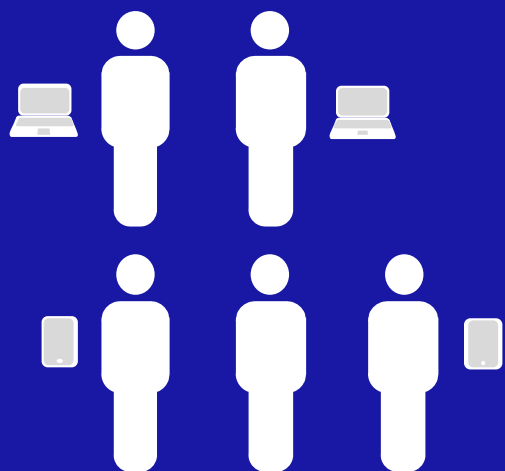
Recap from Last Meeting

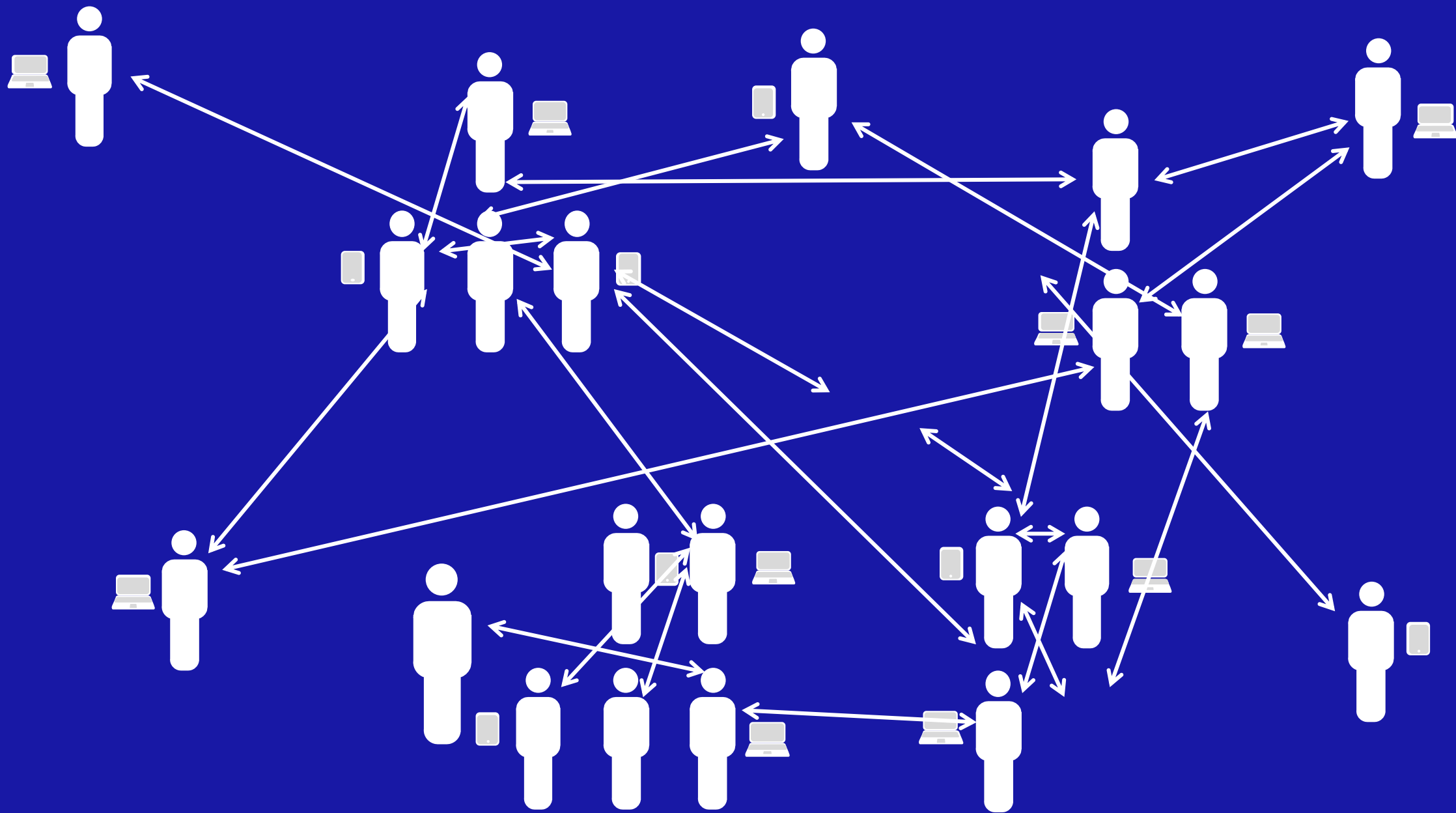




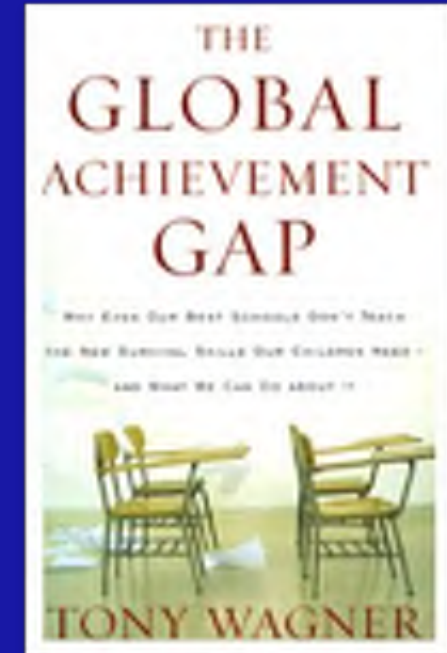
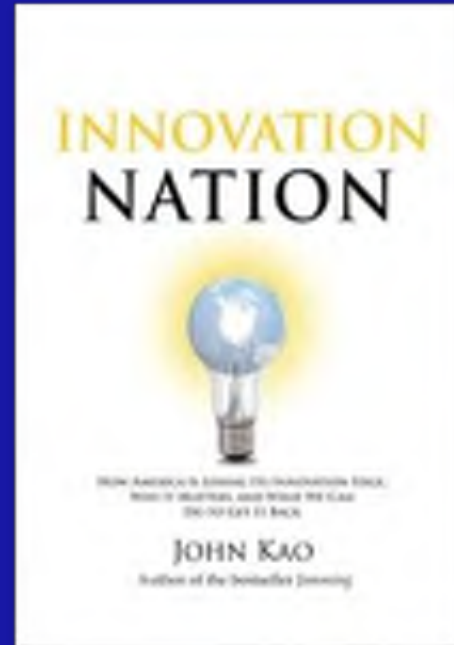
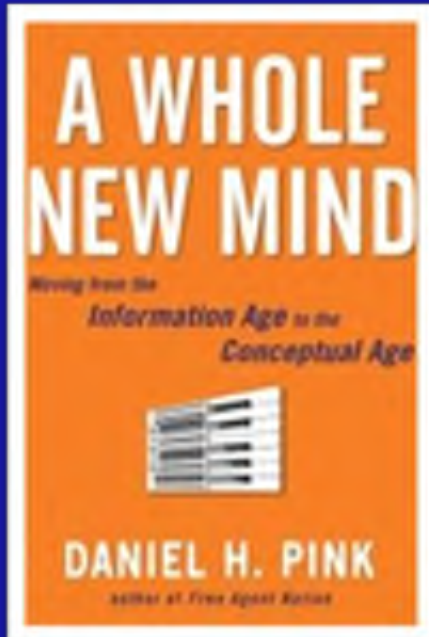








Book Reporting



Visual Tour







**“What is essential is invisible
to the eye.”**

- Antoine de Saint-Exupery

Qualitative Survey Results



COMFORT / WELLBEING



SUSTAINABILITY



CONNECTIONS TO
NATURE



NON-INSTITUTIONAL
FEEL



COMMUNITY
ENGAGEMENT



INTEGRATION OF
COLOR



PROMINENT "FRONT
DOOR"



WAYFINDING



CELEBRATION OF
LEGACY



BEAUTY



Comfort and Well-being

Tone and Materiality

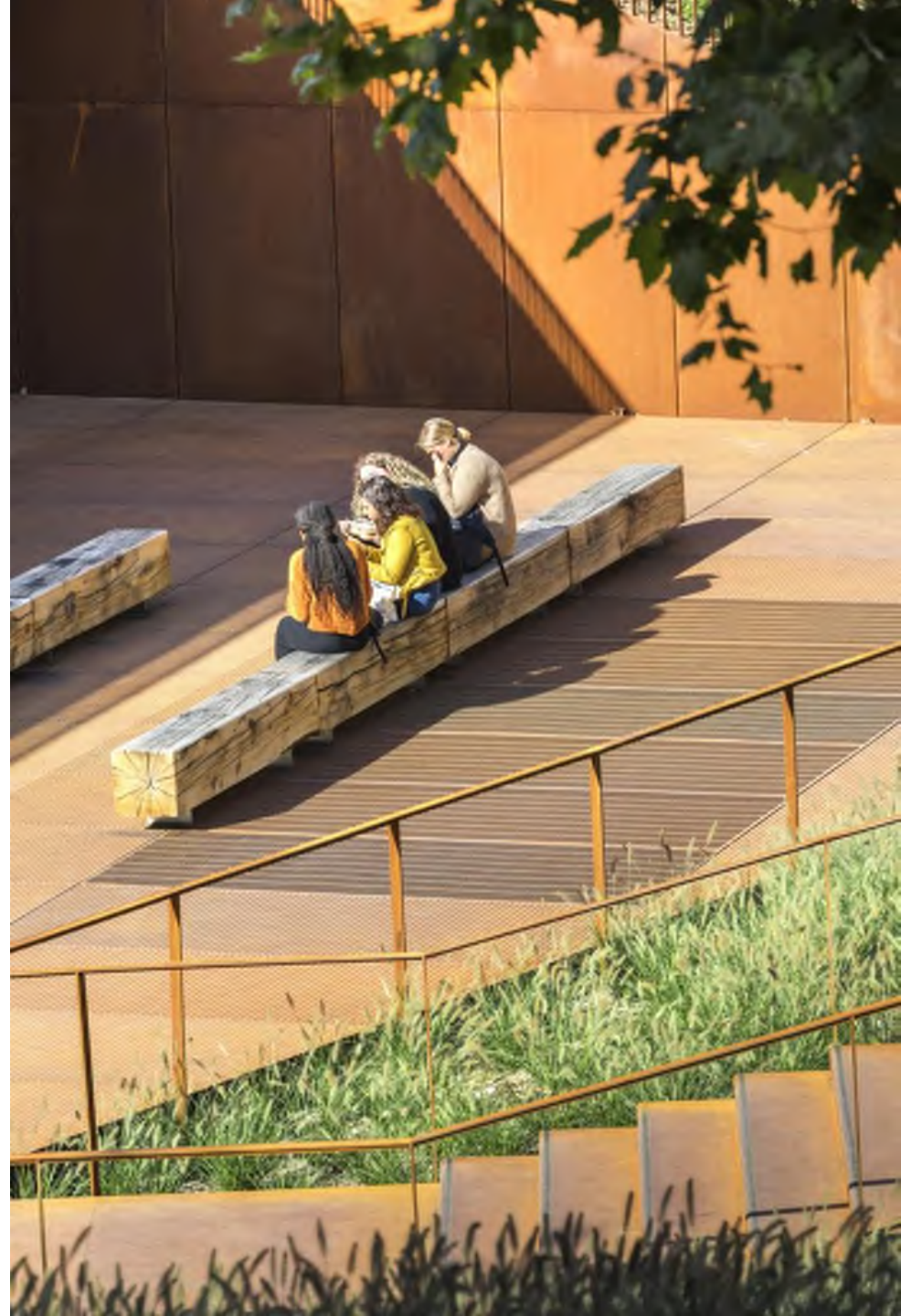
Scale of Space

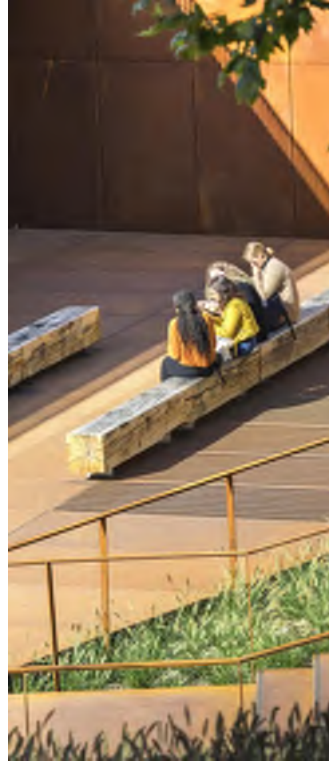
Furniture Selection

Natural Light











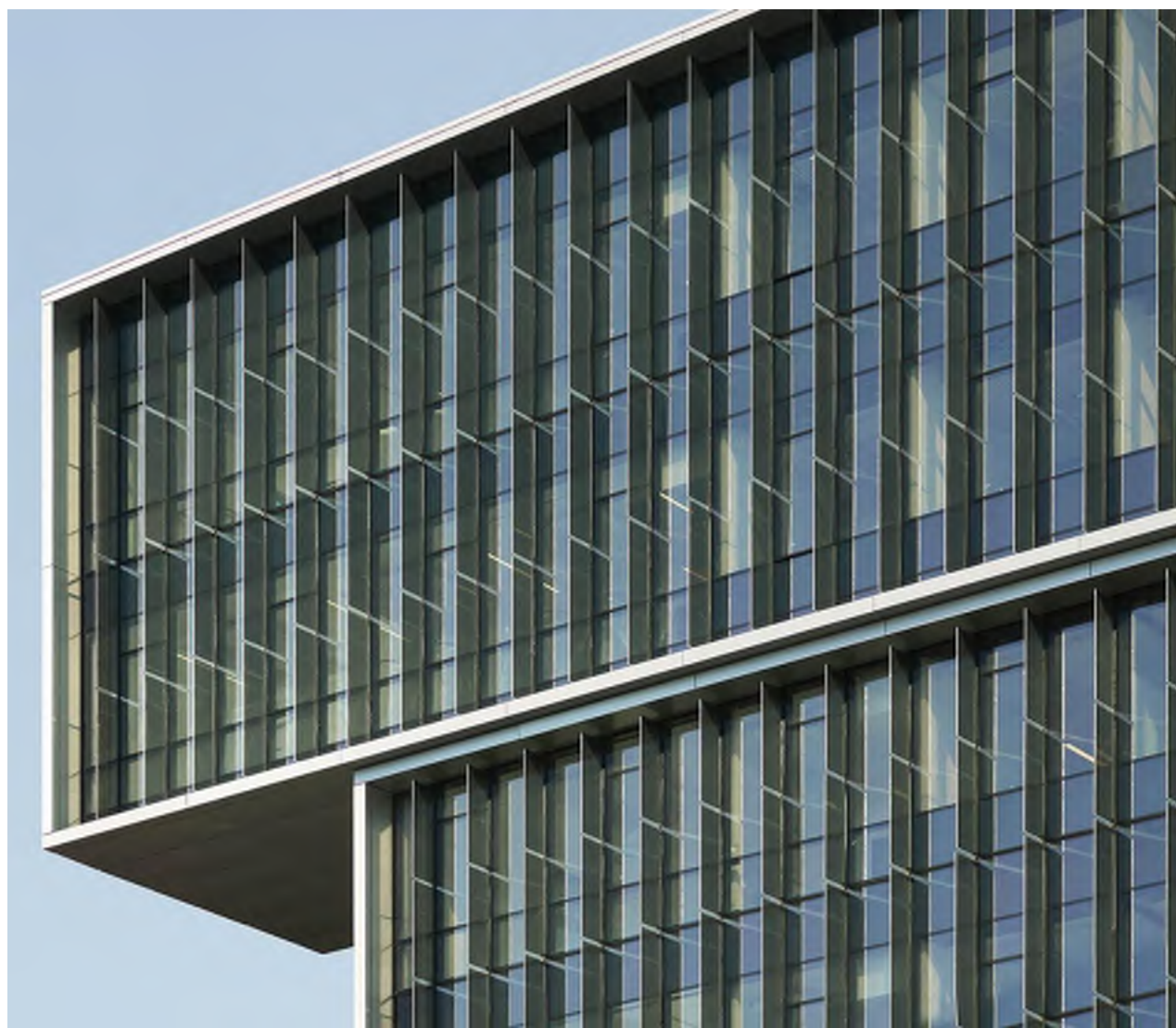
Sustainability & Wellness

Active Design Strategies
Healthy Materials
Access to Natural Light
Energy Efficiency













Connections to Nature

Views to the Outside
Outdoor Extensions of the Classroom
Garden and Landscape











Non-Institutional Feel

Scale of Building and Space
Learning on Display
Warmth
Lightness and Tone





HUMPHREYS







Community Engagement

Welcoming
Multi-Use Spaces
Information Display
Building Prominence









DS DASSAULT
SYSTEMES





Integration of Color

Accenting
Messaging and Signage
Creating Engagement and Activity











Prominent “Front Door”

Creating Identity
School Presence within Community
Transparency and Visibility
Clear Entry Experience



SNYDER CENTER









Wayfinding

Hierarchy of Program

Movement between Spaces

Material / Accent / Texture / Scale

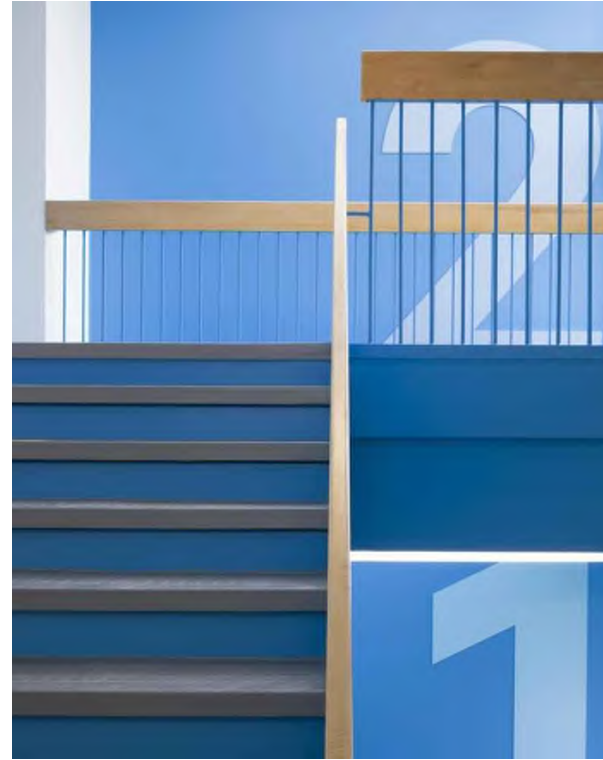
Sightlines













Celebration of Legacy

Storytelling

Expressing “Who We Are” – School Pride

Preserving the History



ETHAN MURTS
Running Back
2011-2012



LISA COLE
Soccer Player
2011-2012



Our promise to you.

We are committed to a partnership with students, parents and the community.

We will care for each student. We will provide each student with the knowledge, skills and attitude to become a productive citizen in a challenging, technological, and diverse world.





Beauty

Architecture that Invokes a Feeling
Quality of Space
Attention to Detail
Memorable











**INTEGRATION OF
COLOR**



**SUSTAINABILITY &
WELLNESS**



BEAUTY



**CELEBRATION OF
LEGACY**



**NON-INSTITUTIONAL
FEEL**



**PROMINENT FRONT
DOOR**



WAYFINDING



**COMFORT &
WELL-BEING**



**CONNECTIONS TO
NATURE**



**COMMUNITY
ENGAGEMENT**

Next Steps →

What to expect in our next meeting?

- **“TED Talks” – Aspirational thinking**
- **Diving into Program Elements**

Scheduled Tentatively for Thursday, May 7th

ARTIST

MOTIVATE

INTEGRITY

INSPIRATION

LAKE HIGHLANDS

INCLUSIVENESS

INNOVATION

CREATE

ENGAGED

PROCESS

CREATIVE

TEAM

APPROACH

/ THANK YOU