

ARTIST

MOTIVATE

INTEGRITY

LAKE HIGHLANDS / WELCOME TO DAY SIX

INSPIRATION

INCLUSIVENESS

INNOVATION

CREATE

ENGAGED

PROCESS

CREATIVE

TEAM



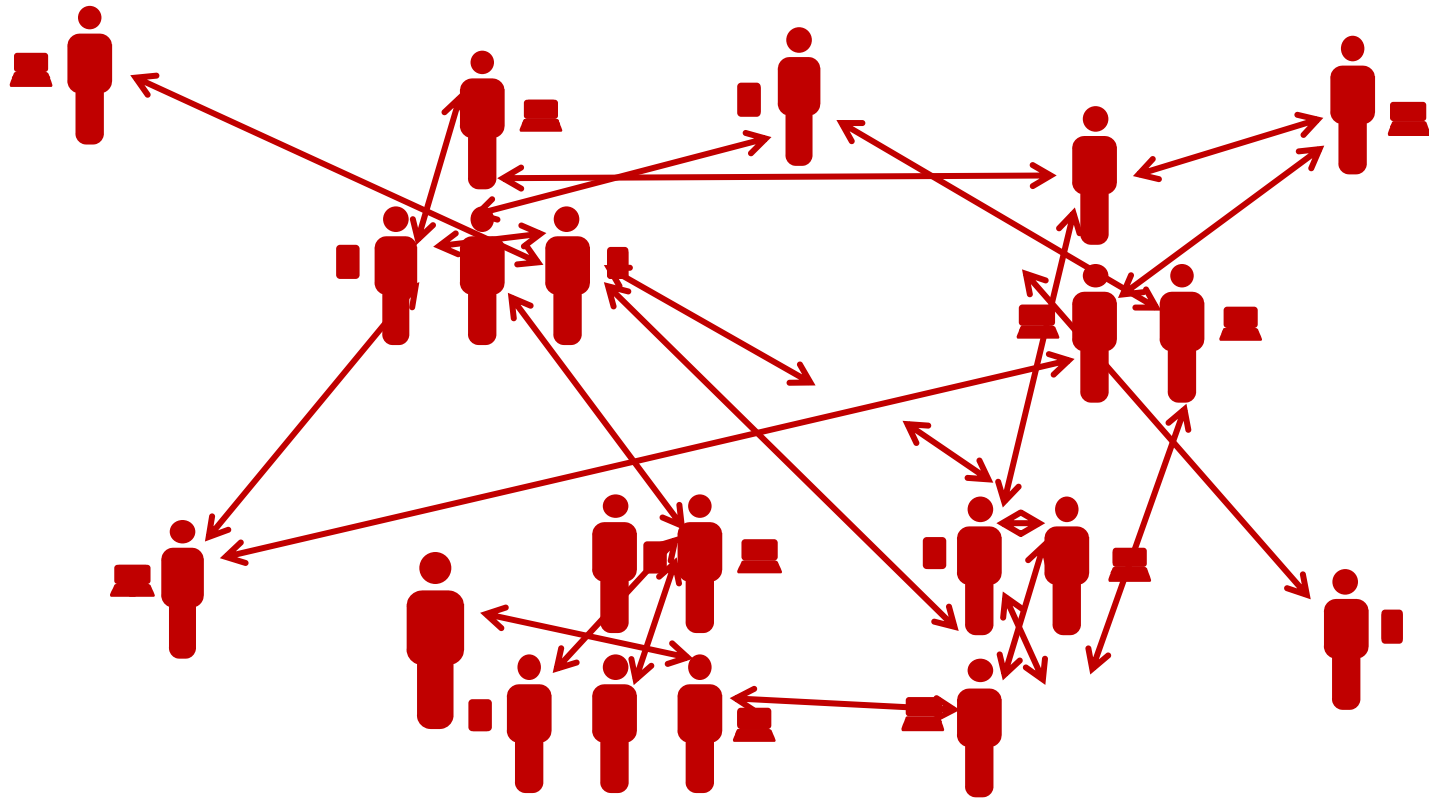
Please be sure to visit the website for updates.

www.iamlakehighlands.squarespace.com

Password: **wildcats**

Recap of our Time

Kick- Off Meeting



What is a Future Ready School?



Day One – Design Priorities

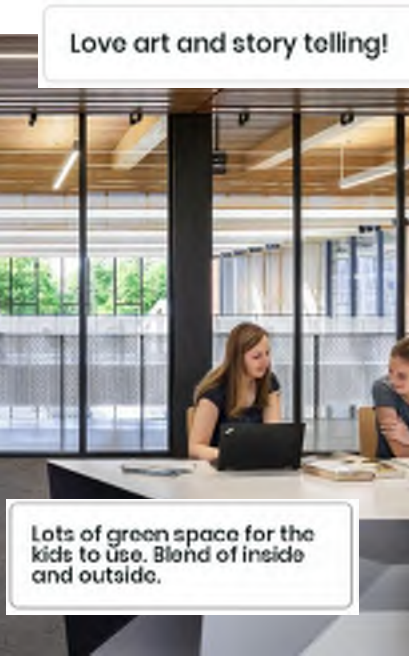
Perkins&Will

Please provide the following based on experience you have for the award-winning Highlands Junior High School. Draw as much of the HIGHEST to LOWEST priority.

- 1. Connections to Nature
- 2. Statement Think Space
- 3. Wayfinding
- 4. Community Engagement
- 5. Technology
- 6. Beauty
- 7. Wayfinding
- 8. Signage/Visual ID
- 9. Sustainability
- 10. Comfort/Wellbeing



1. COMFORT/WELLBEING
2. SUSTAINABILITY
3. CONNECTIONS TO NATURE
4. NON-INSTITUTIONAL FEEL
5. COMMUNITY ENGAGEMENT
6. INTERACTION OF COLOR
7. PROMINENT "FRONT DOOR"
8. WAYFINDING
9. CELEBRATION OF LEGACY
10. BEAUTY



Love art and story telling!

Lots of green space for the kids to use. Blend of inside and outside.



love these ideas of showcasing the legacy of the community

Community will love and get behind "Lake Highlands" branding



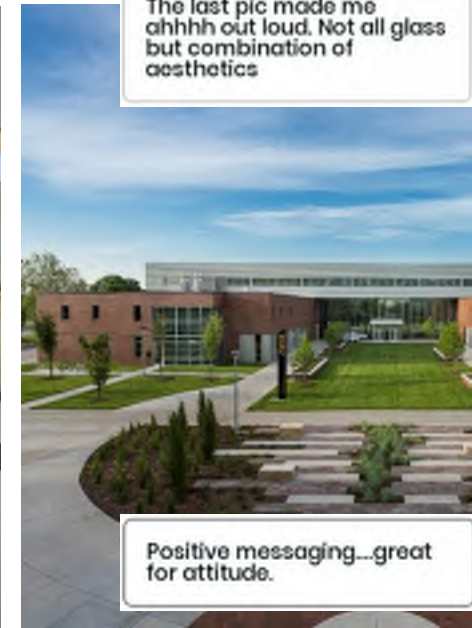
Love art and story telling!

I love the idea of outdoor learning spaces for our students and teachers.



Building form is going to be a selling point for the community

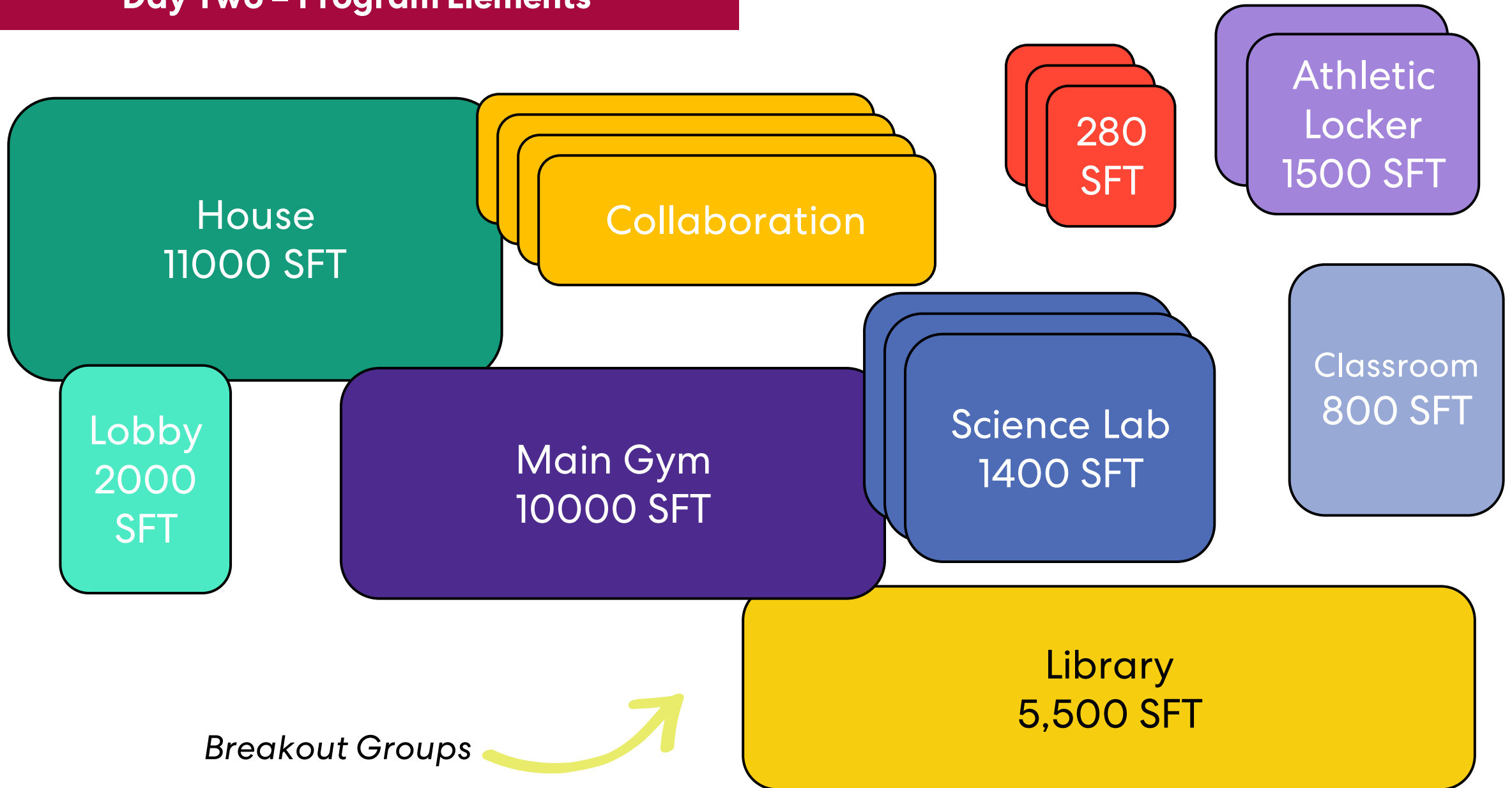
Line of sight is crucial for junior high kids and teachers.



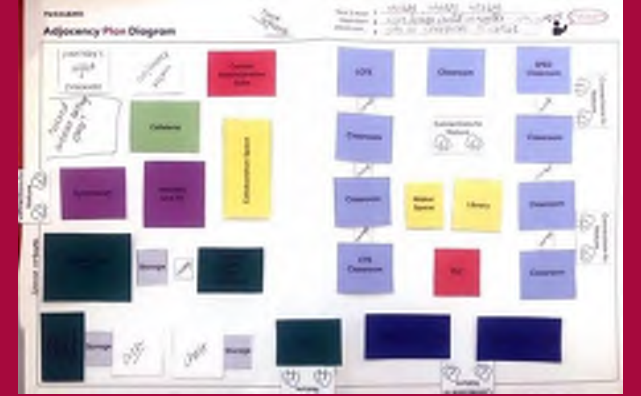
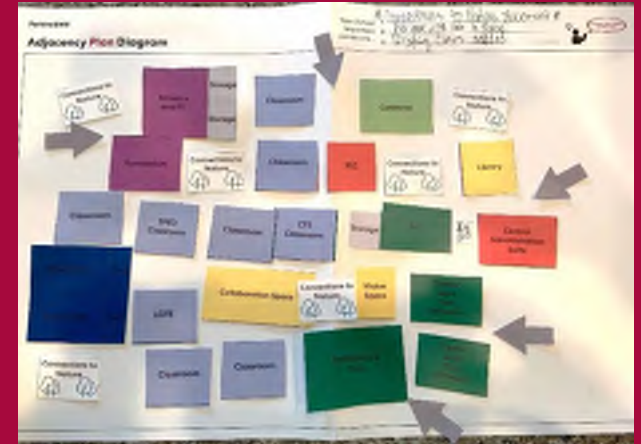
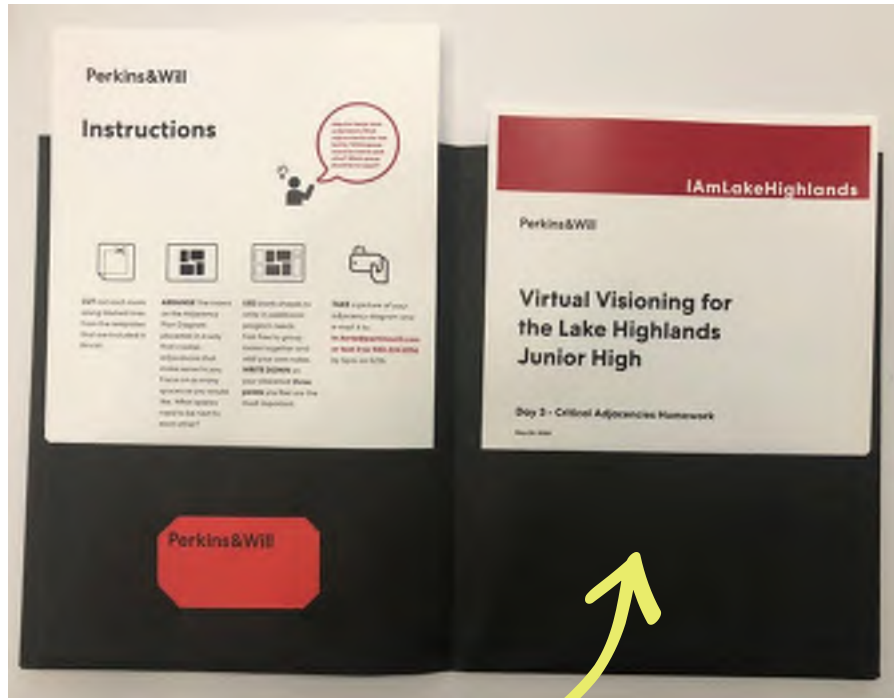
The last pic made me ahhhh out loud. Not all glass but combination of aesthetics

Positive messaging...great for attitude.

Day Two – Program Elements



Day Three – Critical Adjacencies



Day Four – Design Approach

I like the green space on the upper floors

Like the open views onto Cafe or other areas

I like that every level will have open spaces.

I hate to give up the green space but we need parking near auditorium and gym both as well as handicapped in a reasonable space

I like that this doesn't have all the parking in back.

Better for the neighborhood!

Central courtyard is great.

Library seems isolated in corner but great community access!

I love the outdoor pass through but I think it might be difficult to manage sight lines maybe the outdoor spaces should be more collaborative

I like the buffer of the athletics between the building and the neighbors behind

This is very pleasing to the eye and shines a new light on a more modern LHJH.

Love the sprinkling of spaces across building for more classes to interact

Love the consideration of neighbors

Day Five – Conceptual Design



Connection to Outdoors



Professional Learning Communities



Diversity and Inclusion



Passive Supervision



Foster a Culture of Collaboration and Making



Acoustical Comfort



Flexibility for Future Change



Welcoming to the Entire Community



Safety and Security



Phasing

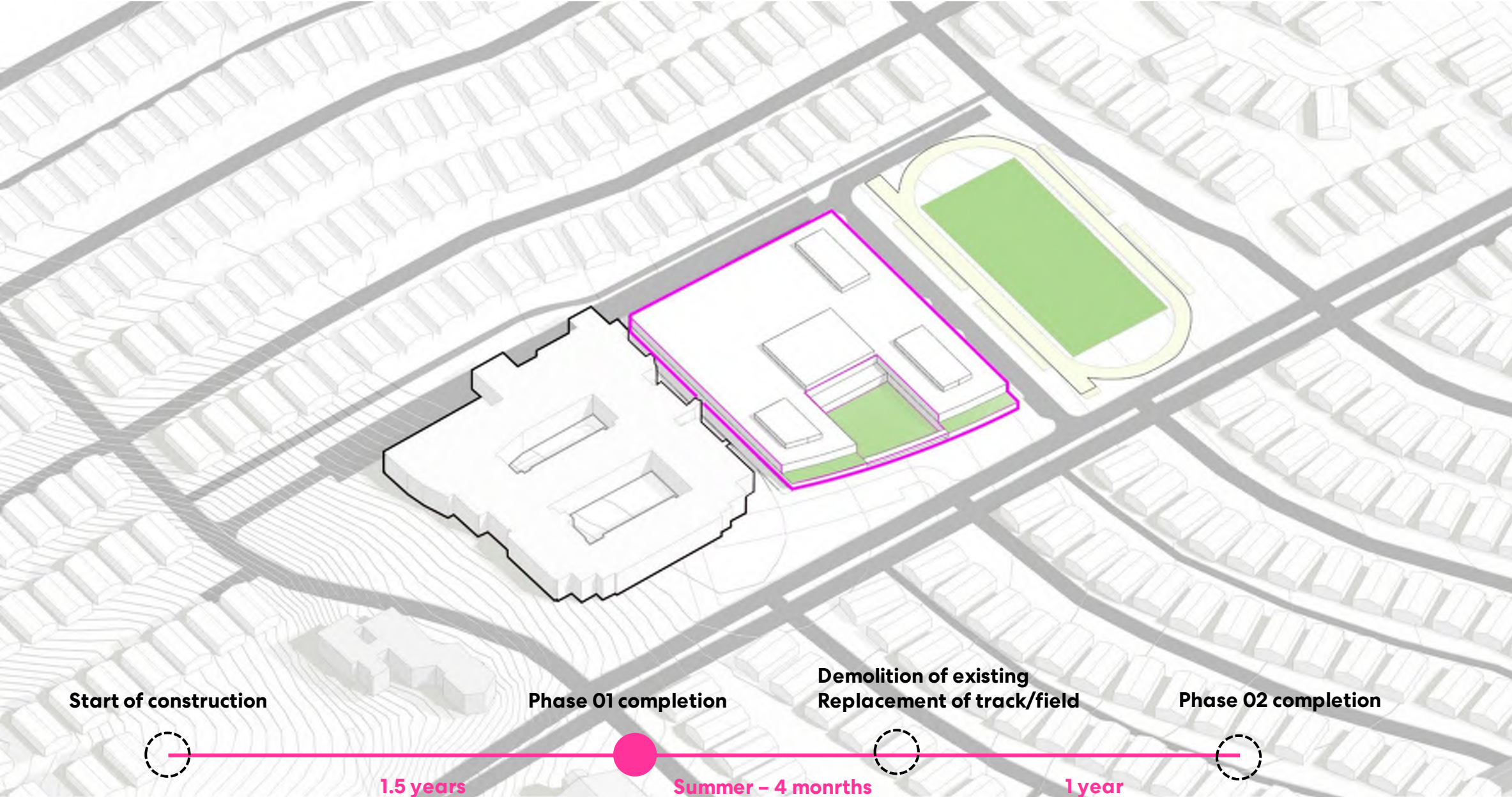


SITE DIAGRAM

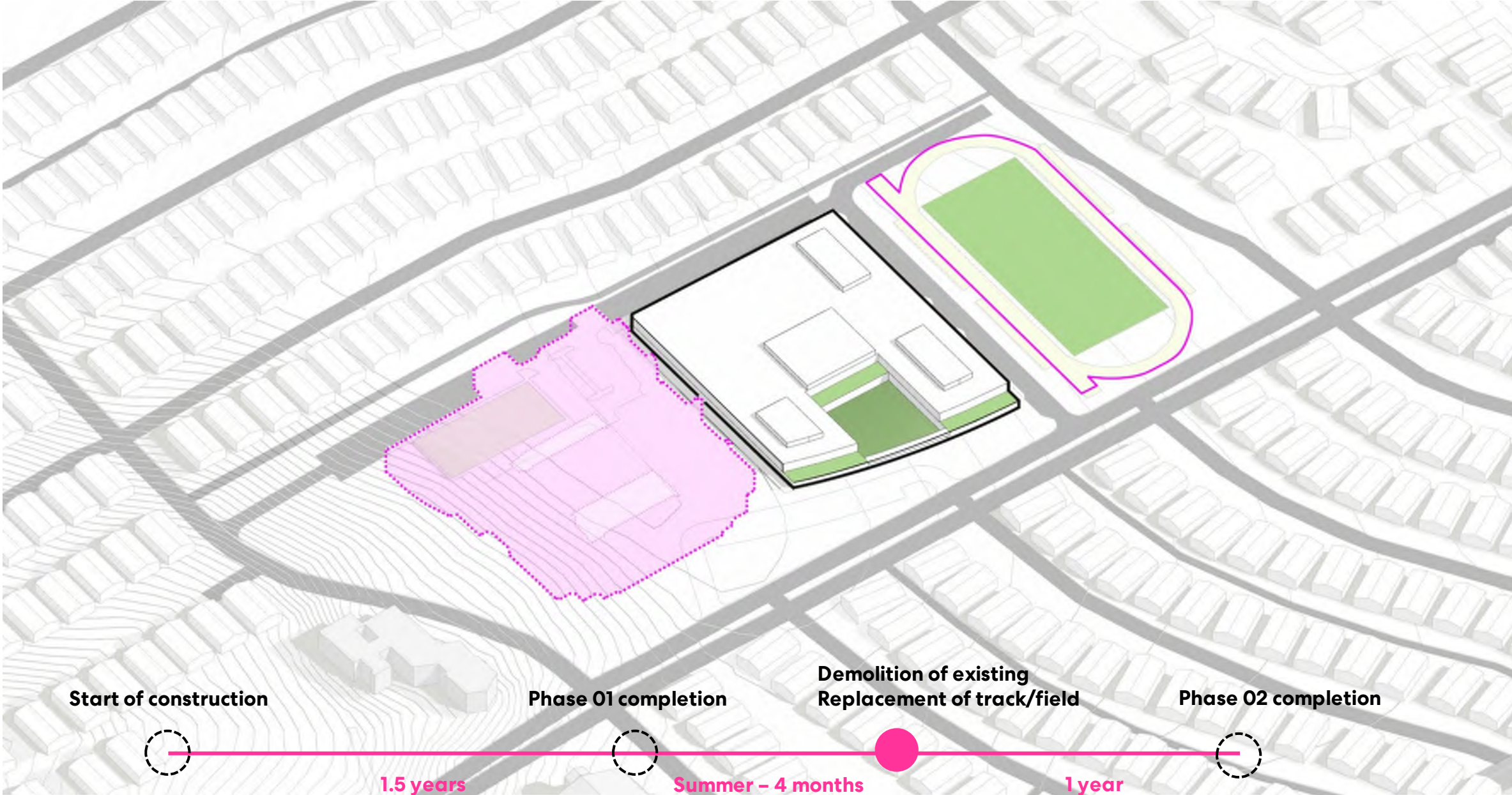


- 1. ENTRY PLAZA
- 2. CENTRAL COURTYARD
- 3. FRONT DROP-OFF
- 4. REAR GYM DROP-OFF
- 5. SERVICE ENTRY
- 6. SPORTS
- 7. PRAIRIE/LAWN
- 8. CONTEMPLATIVE GARDEN
- 9. PARKING

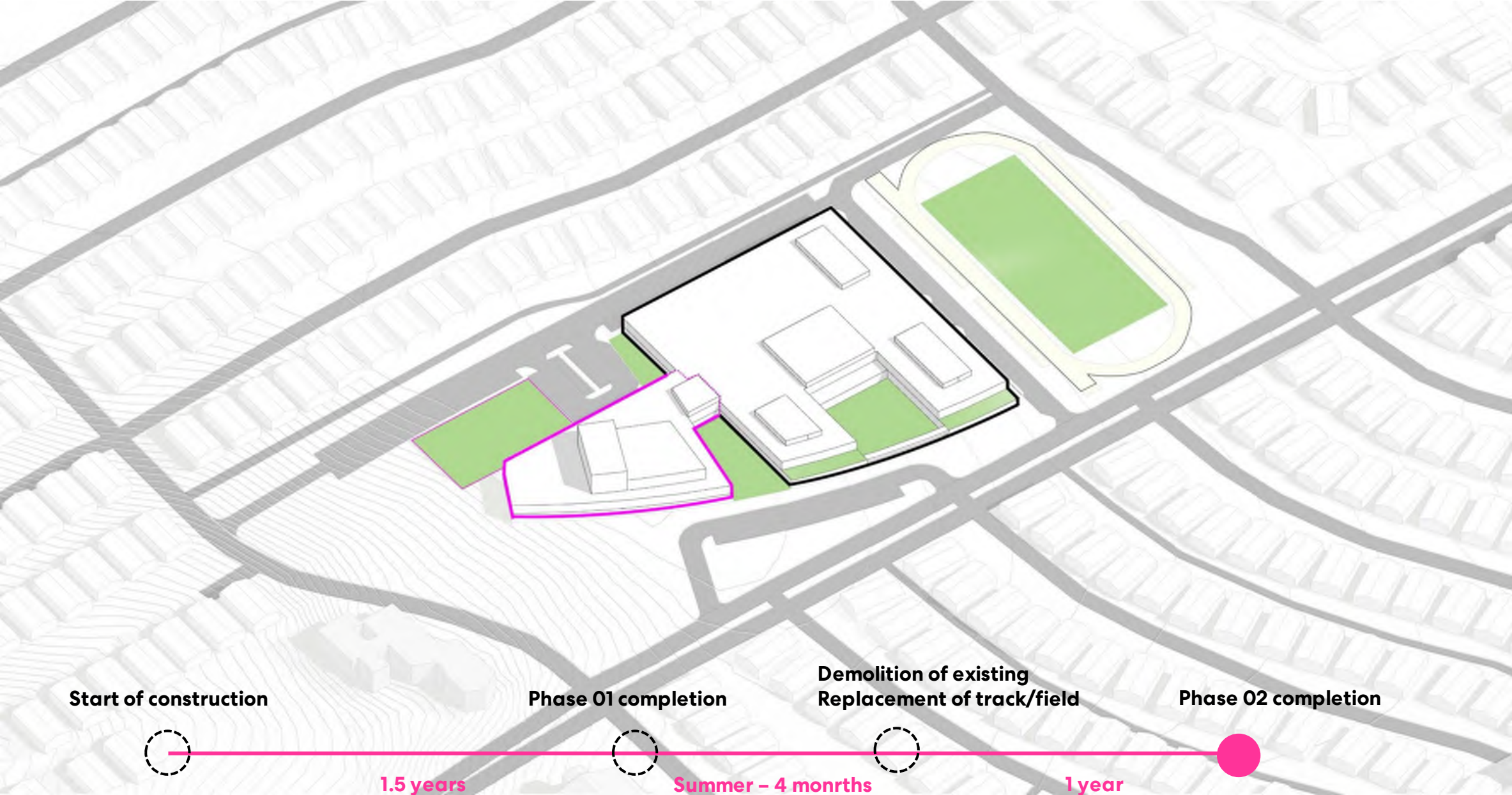
PHASING 01



PHASING DEMOLITION



PHASING 02



Site Plan



PARENT AND VISITOR



STAFF



SERVICE



DESIGN CONCEPT DIAGRAM



MIND

- Teach
- Learn
- Experience



BODY

- Exercise
- Sports



SPIRIT

- Communicate
- Collaborate
- Socialize



NATURE

- Outdoors
- Views
- Daylighting

A center of learning that promotes the healthy development of the mind, body, and spirit in harmony with nature as a catalyst for student and community well-being.

DESIGN CONCEPT DIAGRAM



MIND

- Academic Spaces
- Fine Arts
- Media Center



BODY

- Gym
- Sports Fields
- Athletics



SPIRIT

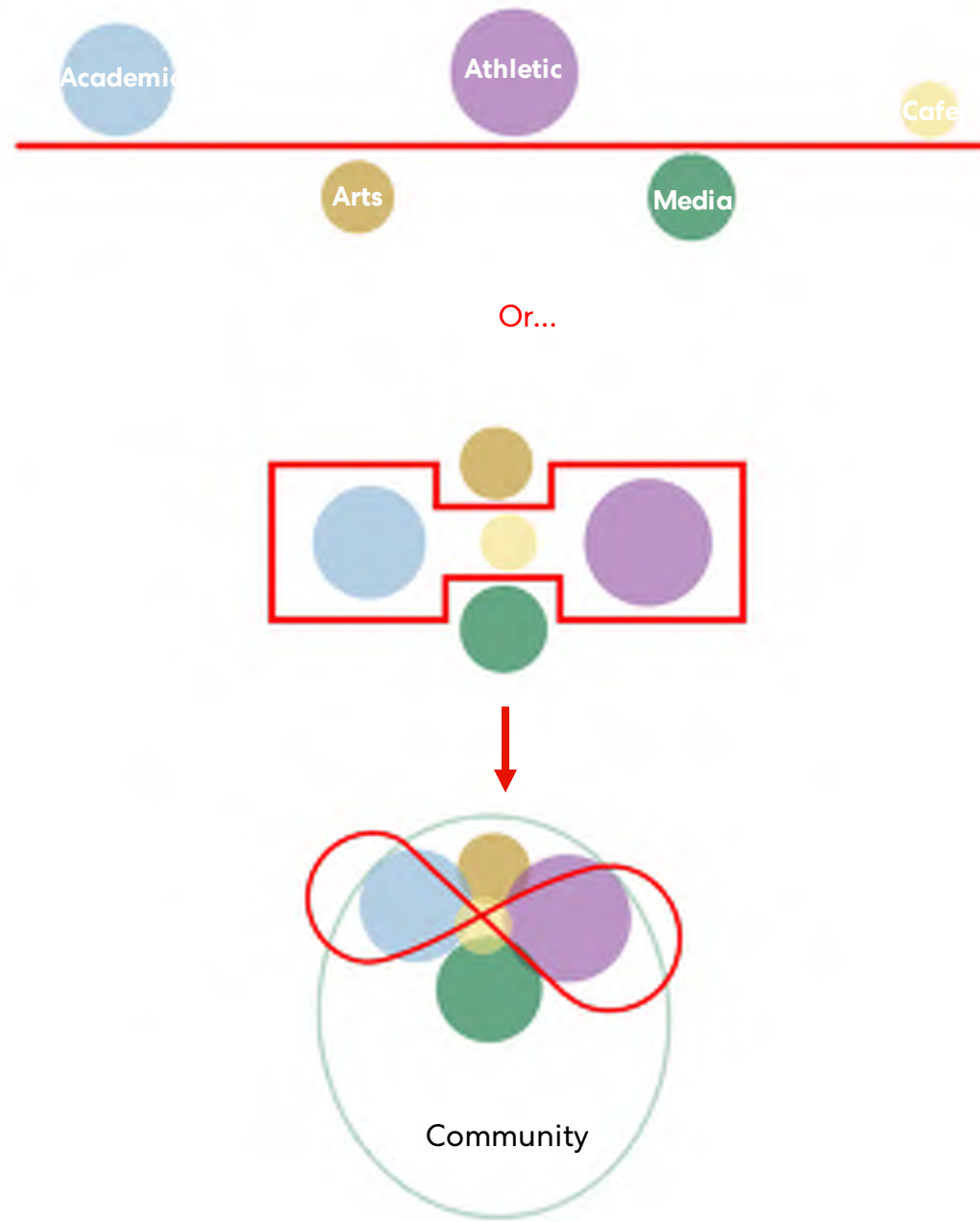
- Cafeteria
- Common space
- Lobby
- Roof terrace
- Circulation



NATURE

- Courtyard
- Plazas
- Roof Terrace
- Landscape

WHAT IF?

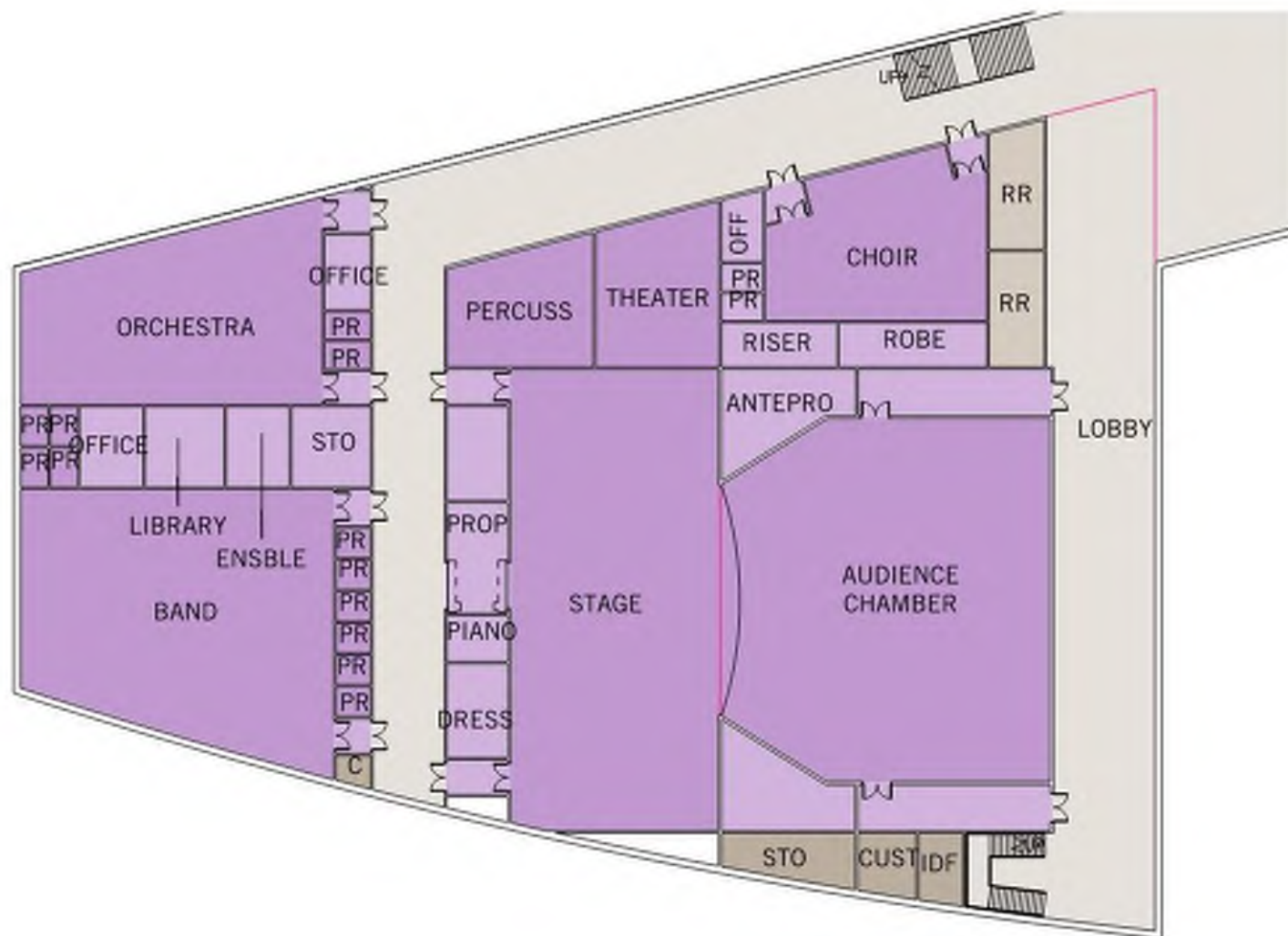


Organize Program in a new Academic and community engaging environment.

LEVEL 01

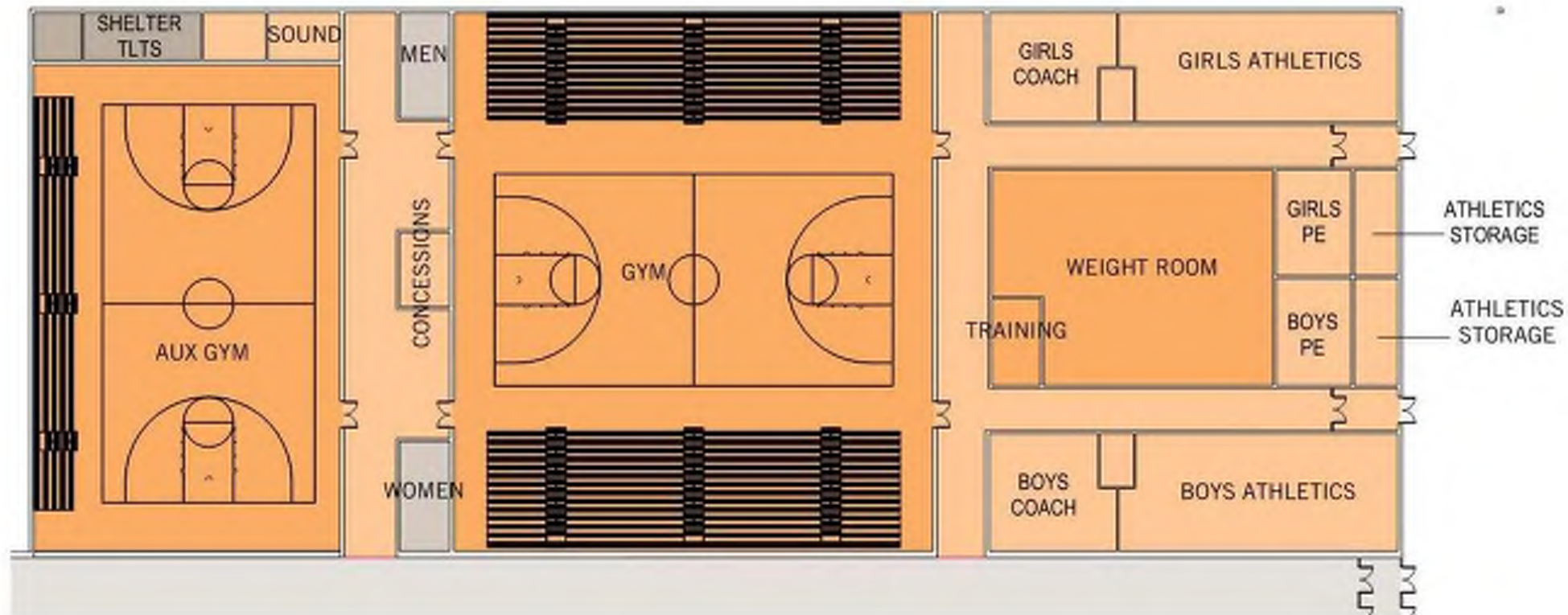


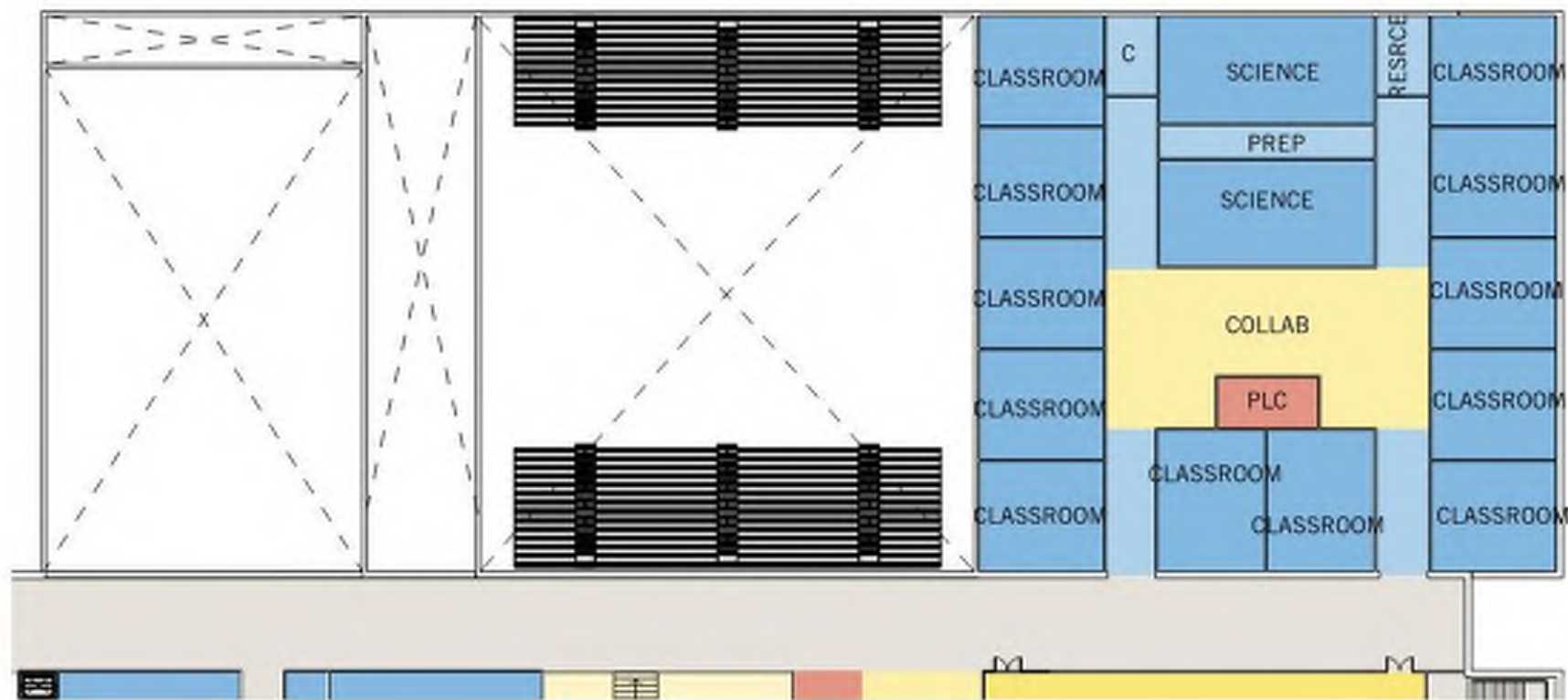




ADMINISTRATION, ART, AND CTE







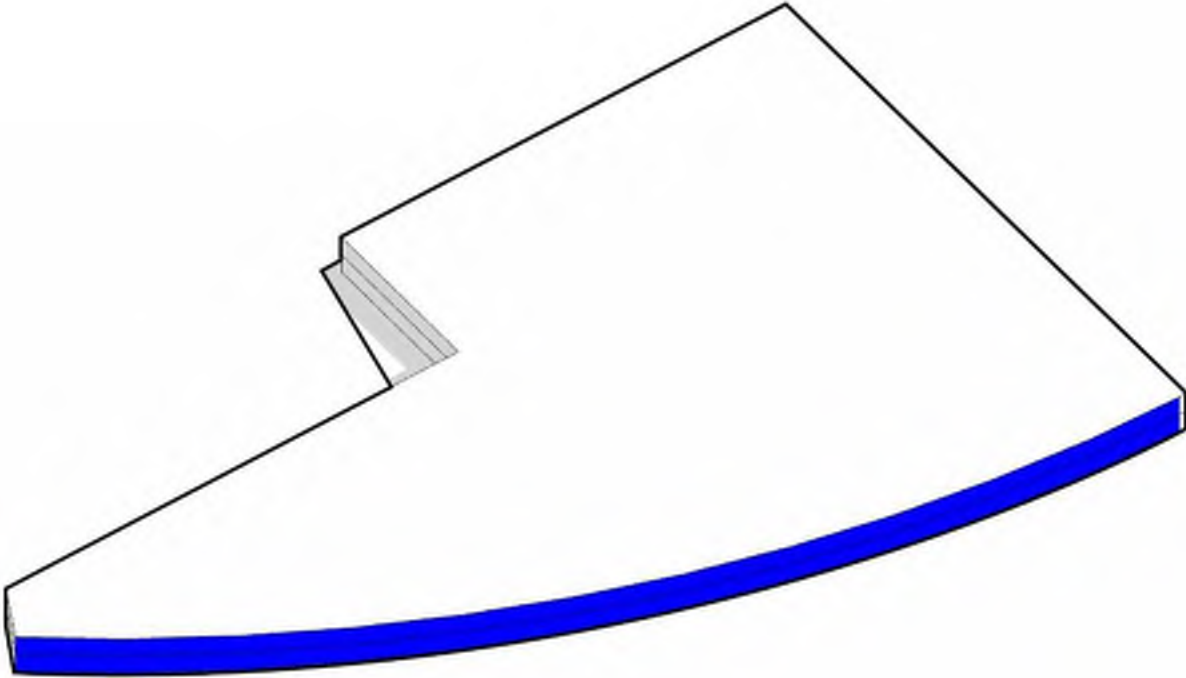
ACADEMIC POD



Architectural Expression

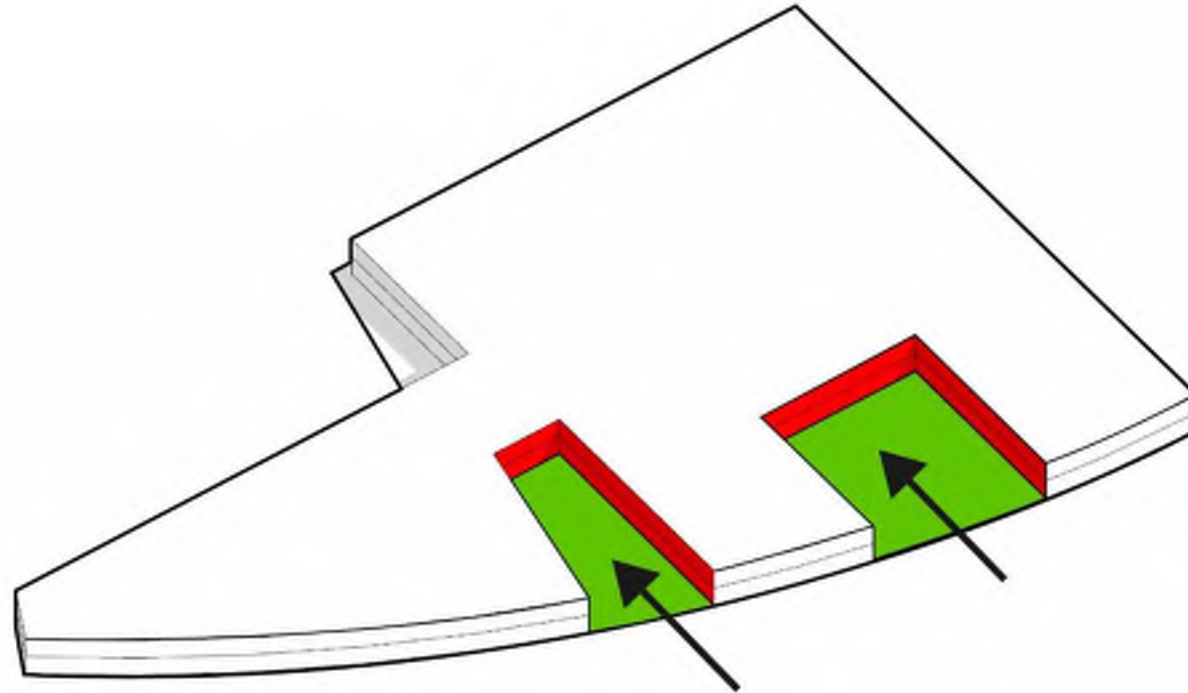


ENVELOPE



CONNECTING TO NATURE

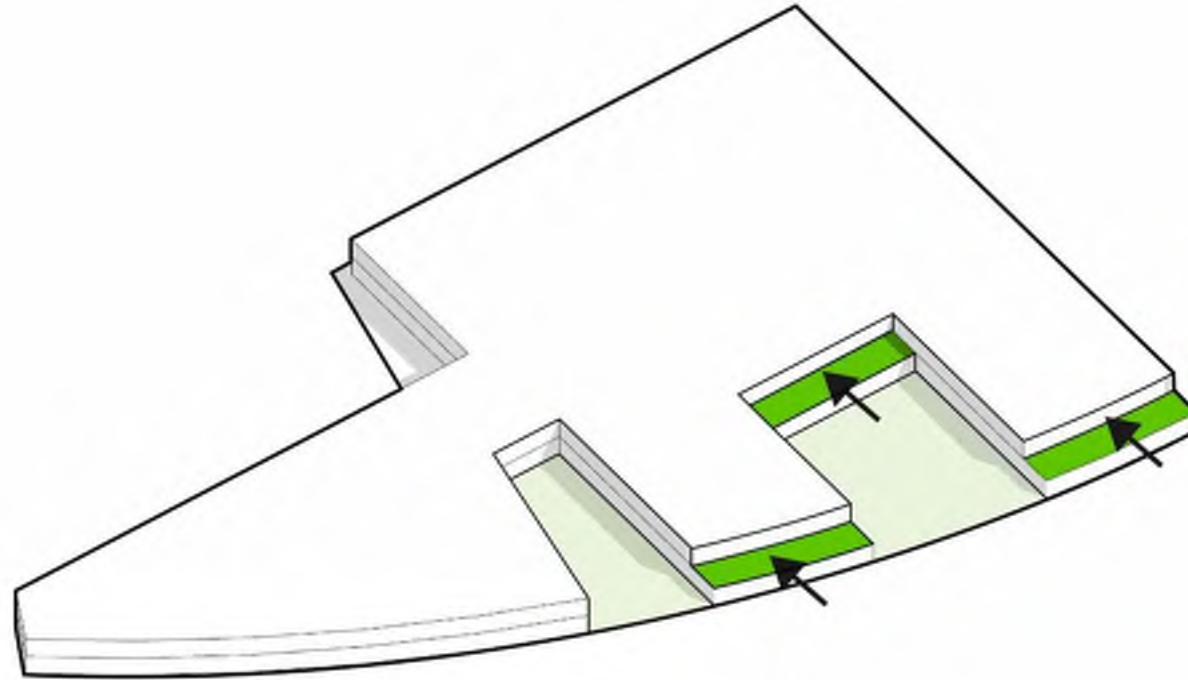
ENTRY PLAZA AND CENTRAL COURTYARD



Incisions in massing block to introduce courtyard, entry, and connection to nature

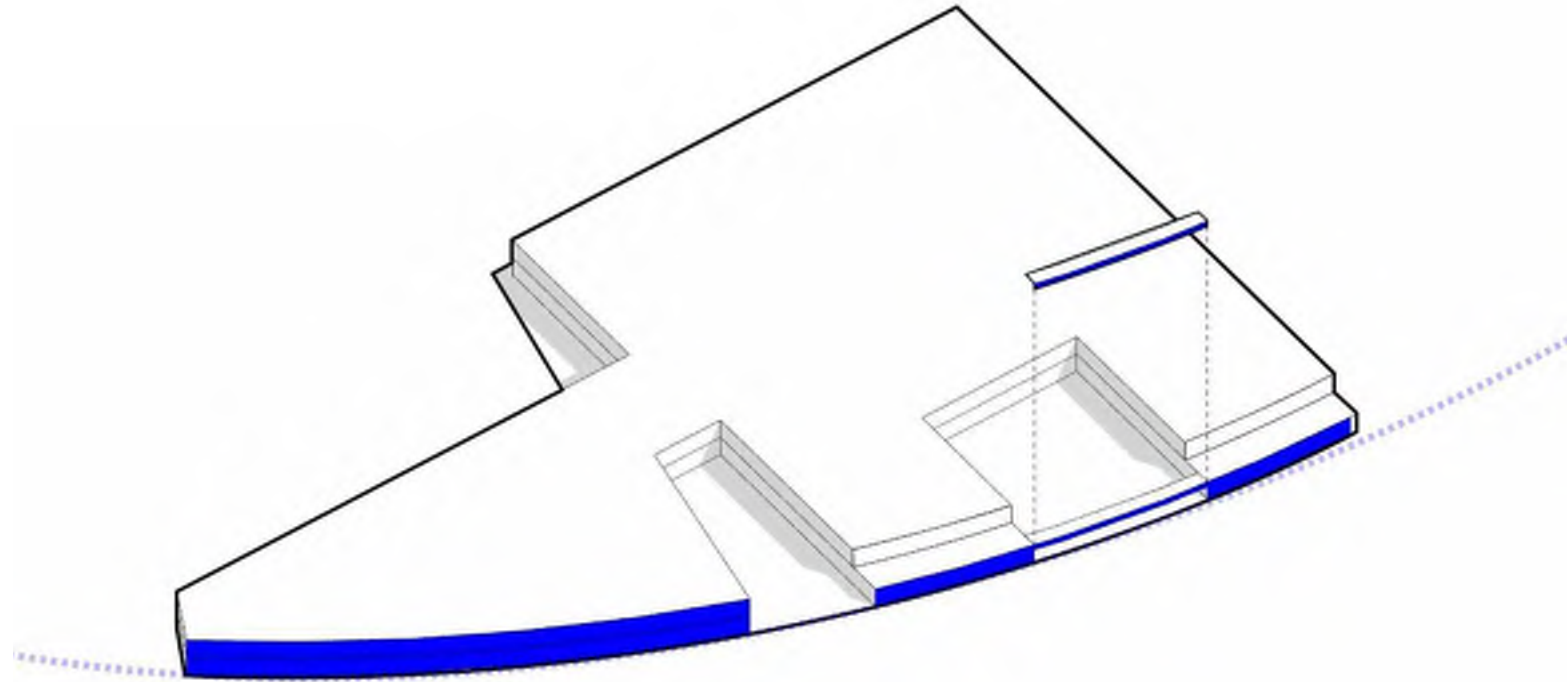
CONNECTING TO NATURE ON UPPER LEVEL

ROOF TERRACES



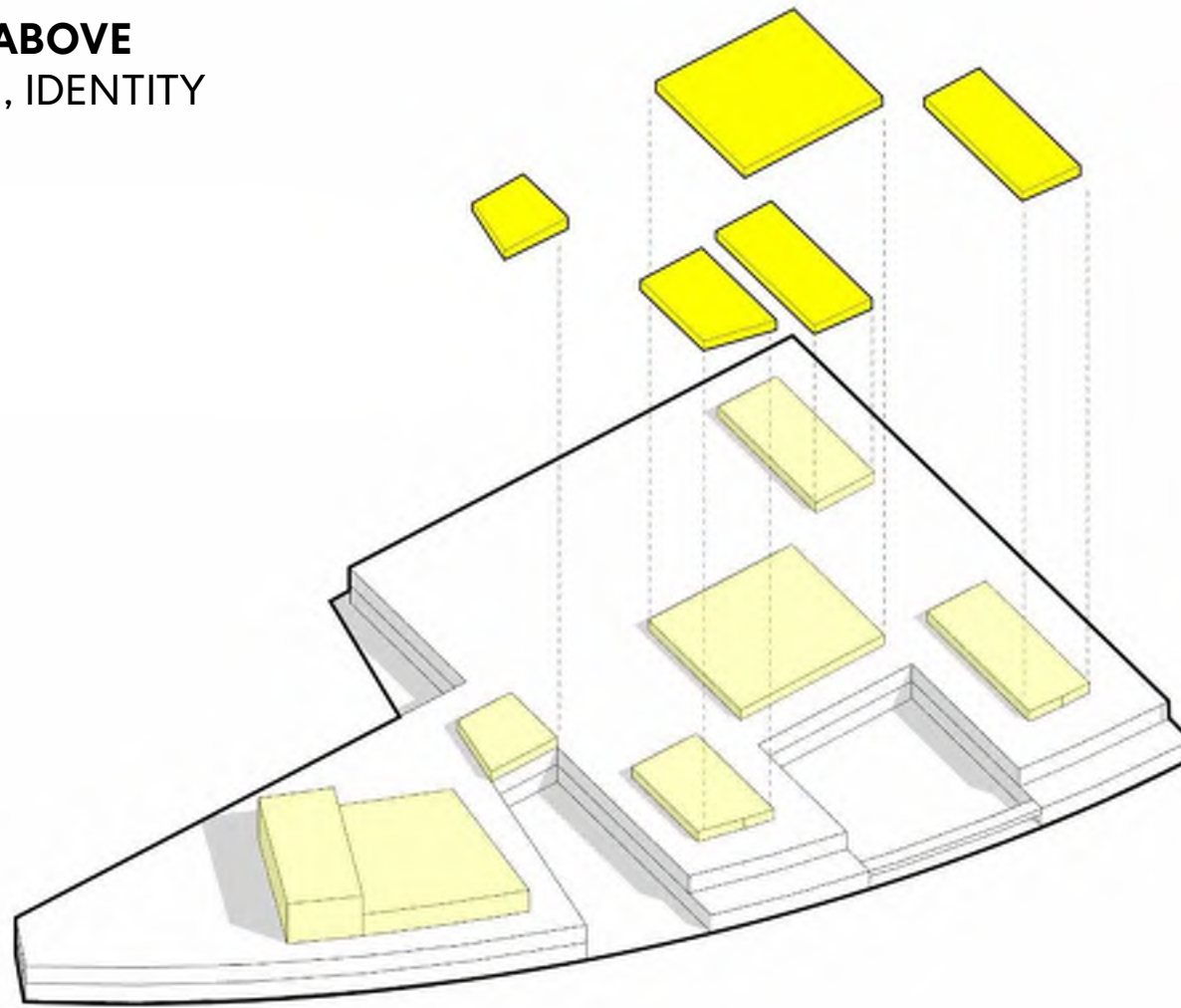
Connection to the outdoor from the learning environment
on the upper level

CONNECTING THE PROGRAMS BRIDGES



Bridging between roof terraces connecting programs and reinforces the school's curved public presence

CONNECTING TO NATURE ABOVE
LIGHT MONITORS, BEACON, IDENTITY



Light monitor identifying beacon from the distance while distributing natural light into learning environment

Materiality



EXISTING CAMPUS



CONTEXT



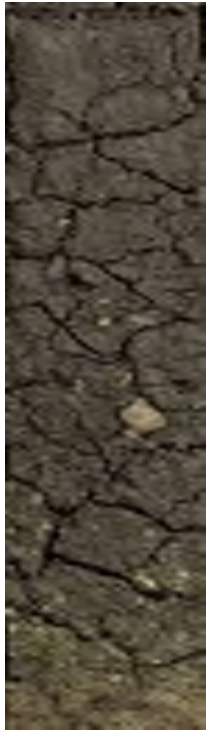
SCALE



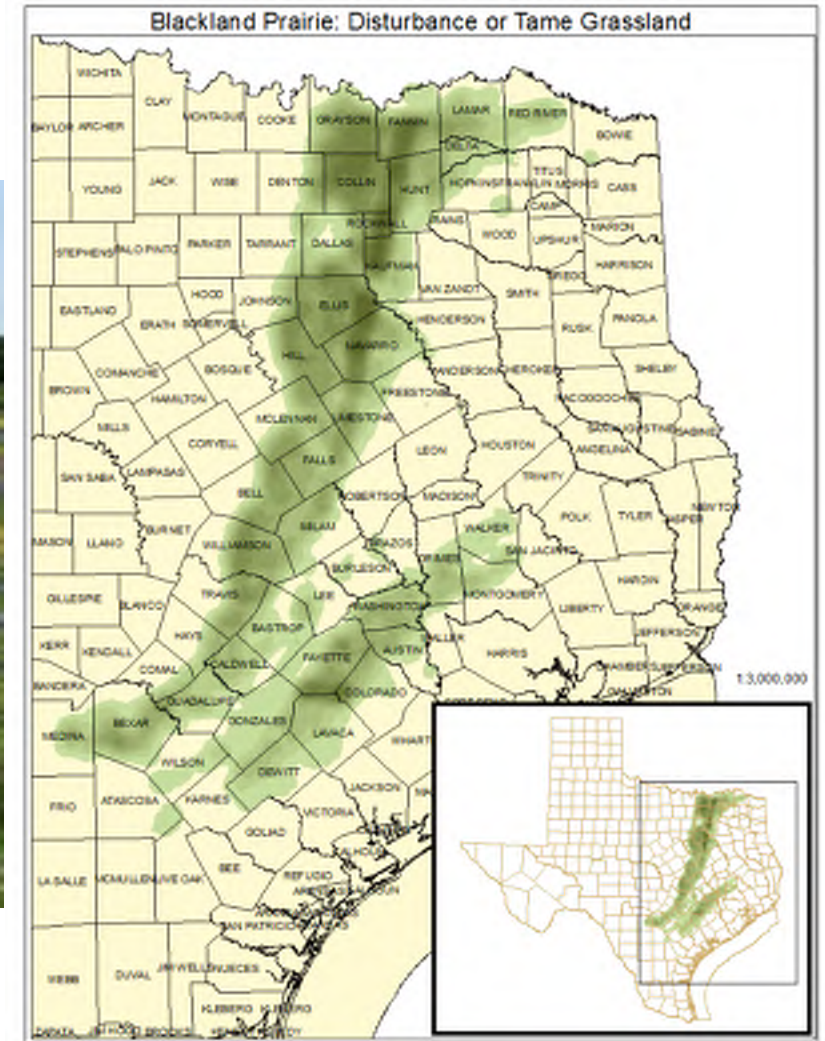
Lake Highlands



HOUSTON BLACK SOIL – BLACK LAND PRAIRIE



Clay
Layering
Stata
Dark

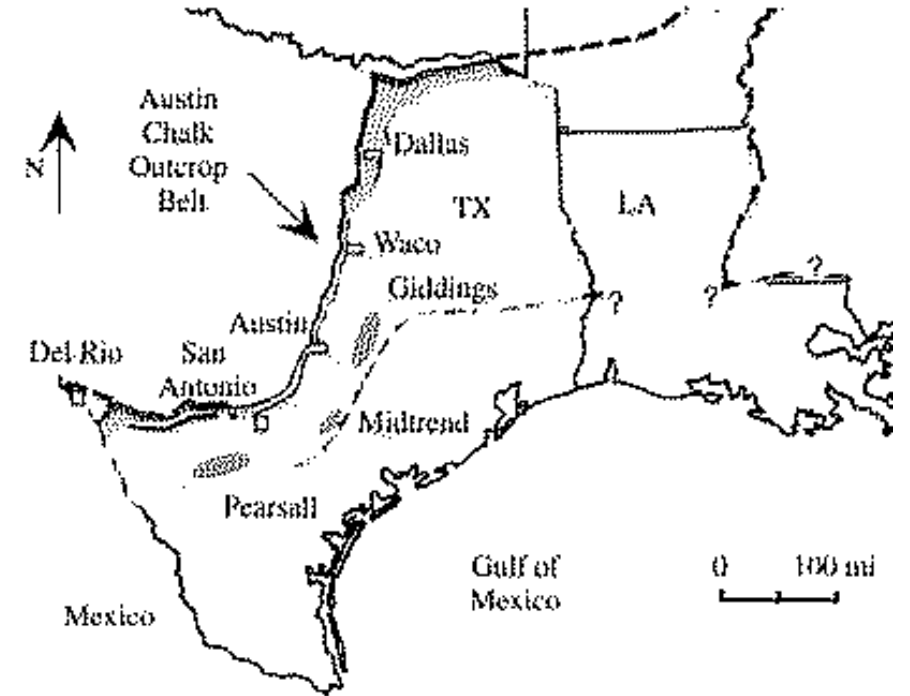


“The Texas Blackland Prairies are a temperate grassland ecoregion located in Texas that runs roughly 300 miles from the Red River in North Texas to San Antonio in the south. The prairie was named after its rich, dark soil name **Houston Black.**”

LIMESTONE – AUSTIN CHALK



Layering
Porous
Soft
Fine-grained
Filtered
Horizontal
Defining Edge



The **Austin Chalk** is an upper Cretaceous geologic formation in the Gulf Coast region of the United States. It is named after type section outcrops near Austin, Texas. The formation is made up of chalk and marl.

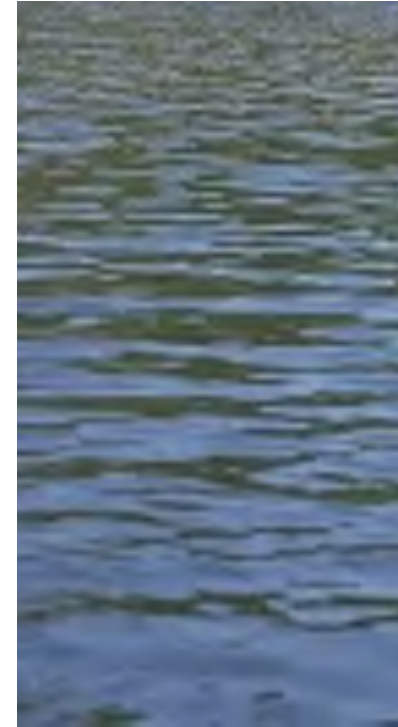
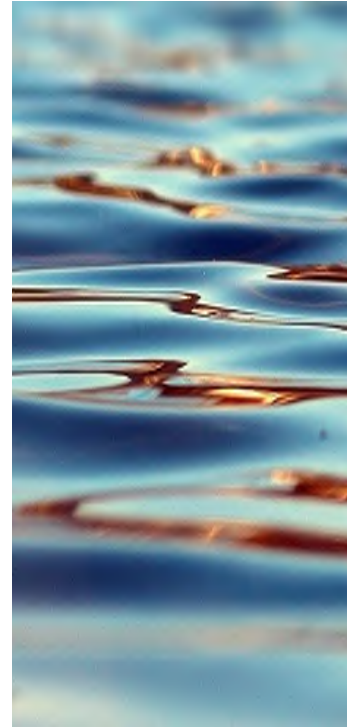
WOOD – LIVE OAK | RED ELM



Texture
Rough
Rhythm
Shade
Grounded

Trees are abundant and mature in lake highlands, one of the most prominent in the area is the live oak.

WATER - WHITE ROCK LAKE



Reflective
Translucent
Ephemeral
Refreshing
Cool
Clear

Much like those lakes, White Rock is a manmade lake. As a result of drought concerns in 1910, a dam was built on a creek following year and the lake eventually filled up by mid-decade. The area had been originally settled by the Beeham family in the 1840's not long after John Neely Bryan founded Dallas

MATERIAL REPRESENTATION

Black Land Prairie



Base

Austin Chalk



Landform

Live Oak



**Rhythm /
Warmth**

White Rock Lake



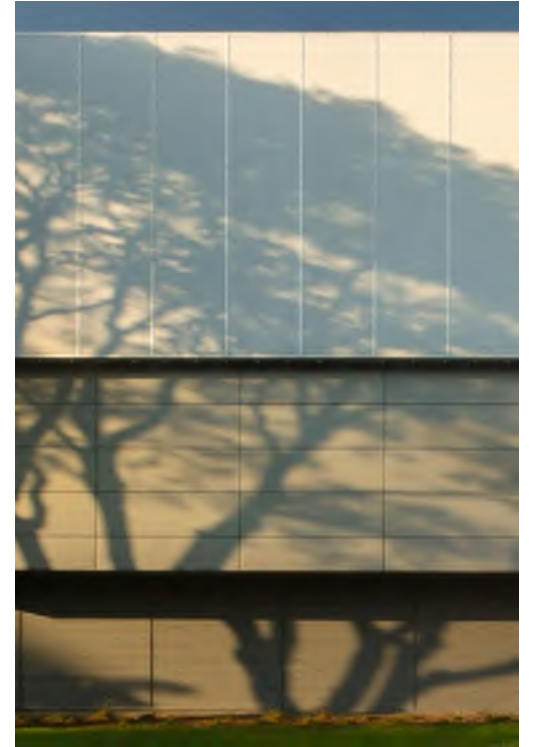
Ephemeral

School Identity



Colors

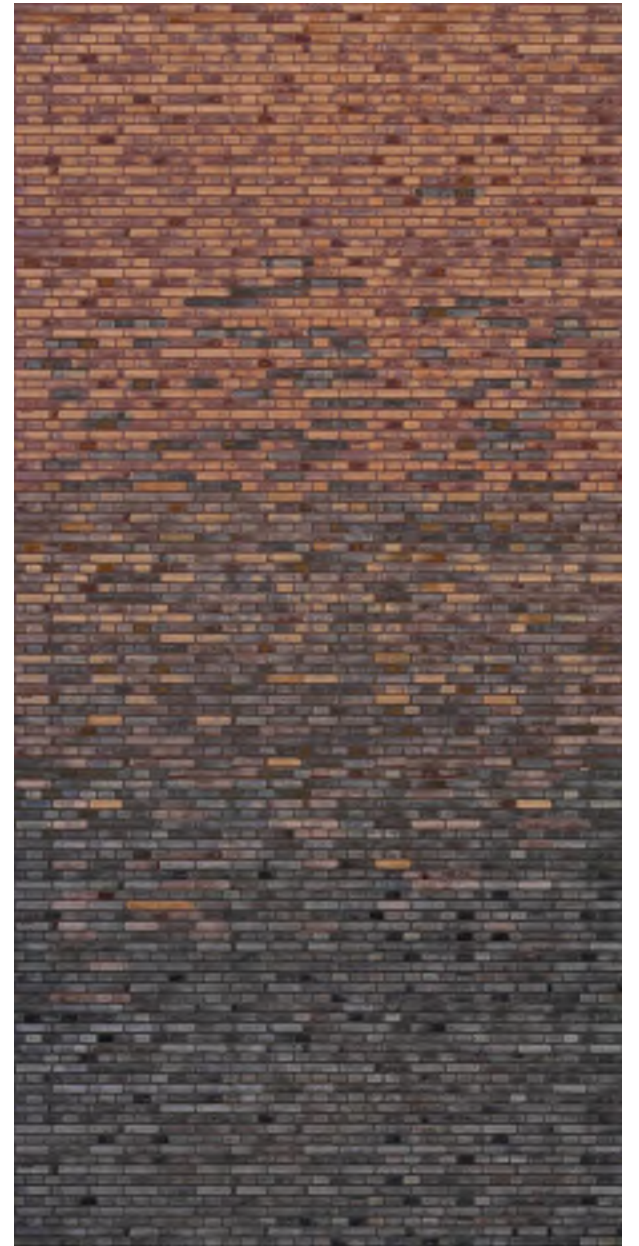
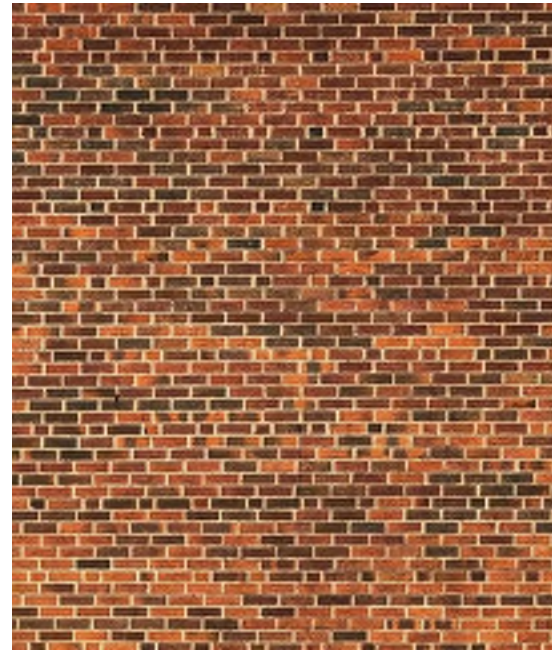
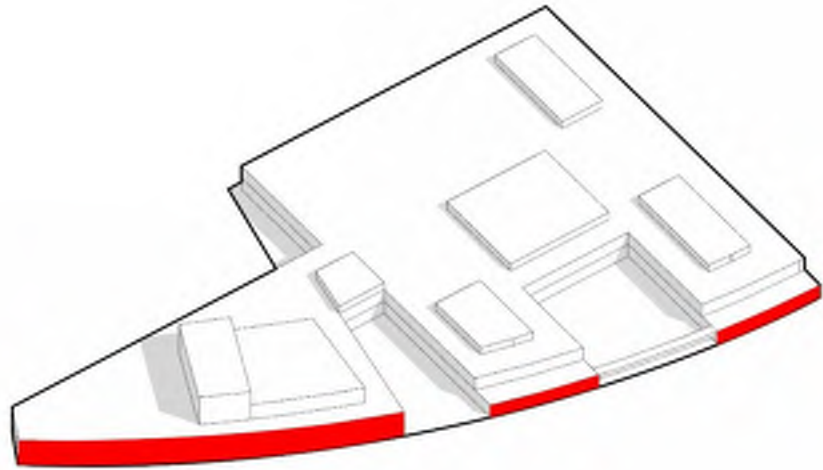
Light



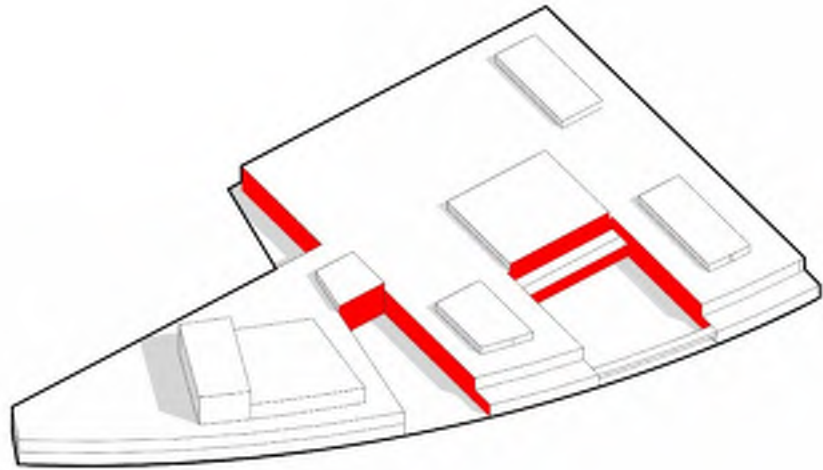
Shadow

THE LAND, PLACE

HISTORY, PRESENT, AND FUTURE

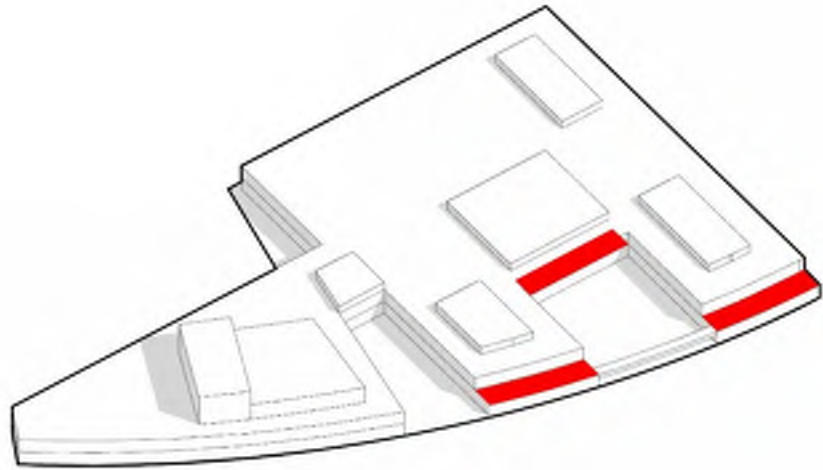


COMMUNITY, SCHOOL SPIRIT, ASSEMBLY
TRANSPARENCY, LIGHTNESS, COLOR

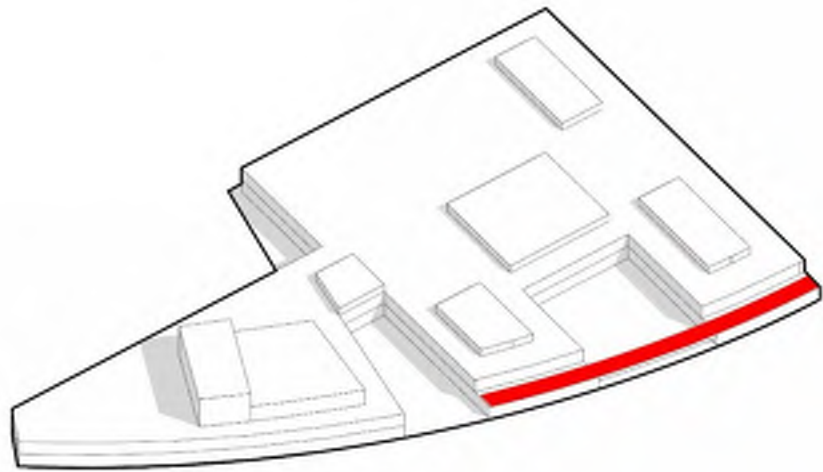


OUTDOOR LEARNING ENVIRONMENT

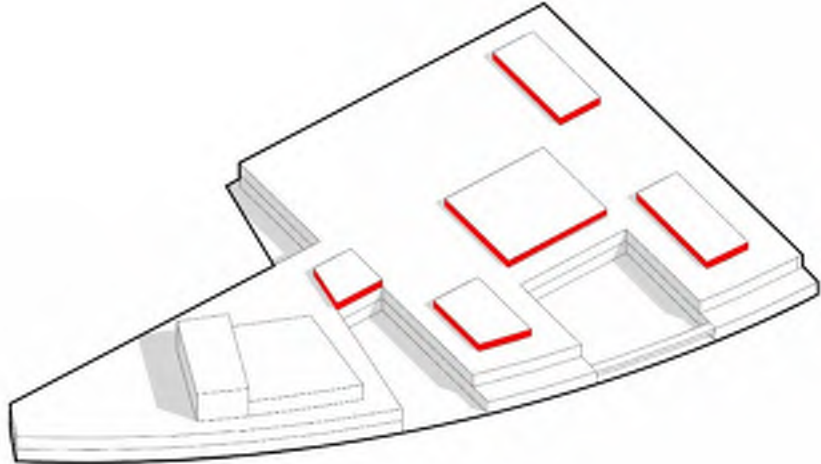
ROOF TERRACE, FILTERED LIGHT, NATURE



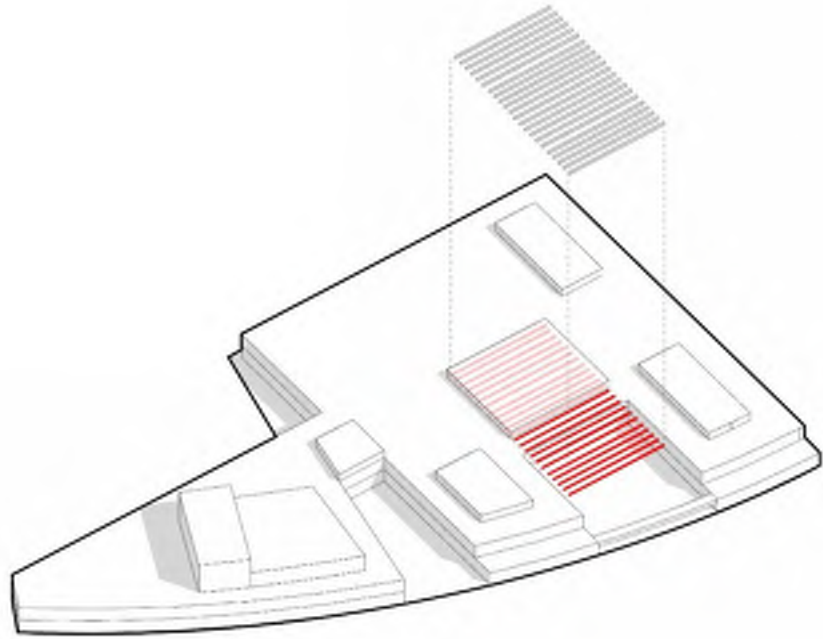
UPPER LEVEL CIRCULATION LOOP PEDESTRIAN BRIDGE



**CONNECTION TO NATURE ABOVE
DAYLIGHTING**



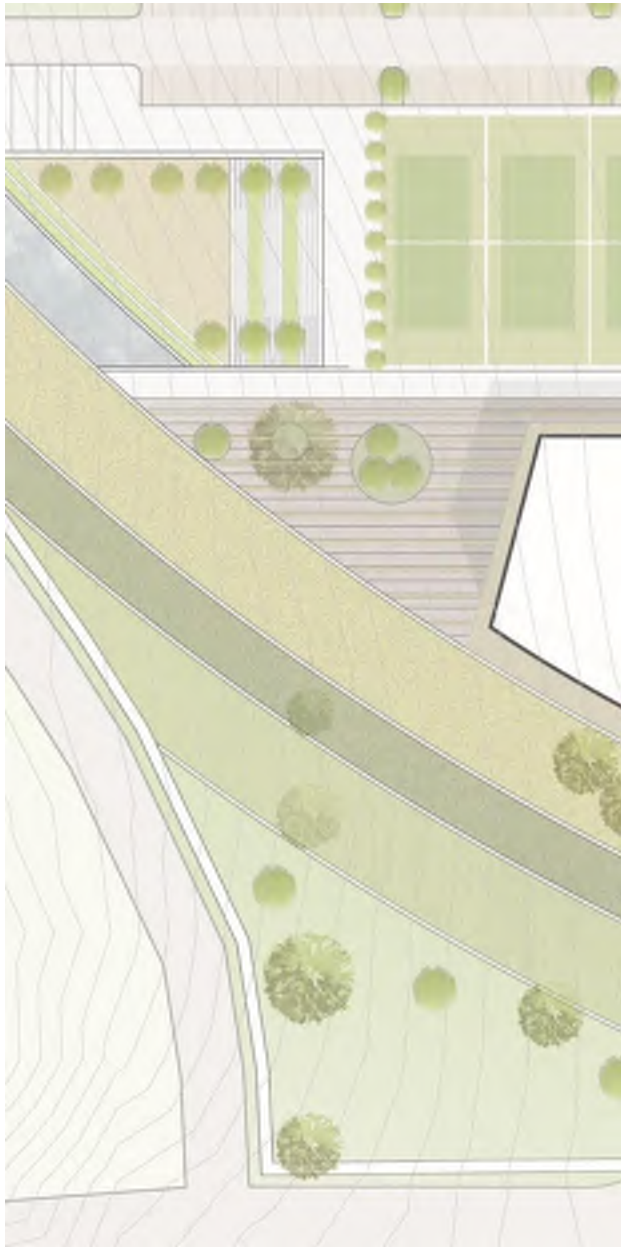
SHADED OUTDOOR ENVIRONMENT TRANSITION FROM EXTERIOR TO INTERIOR



Design



Site - Architecture, Place, and Native



Site Diagram



- 1. ENTRY PLAZA
- 2. CENTRAL COURTYARD
- 3. FRONT DROP-OFF
- 4. REAR GYM DROP-OFF
- 5. SERVICE ENTRY
- 6. SPORTS
- 7. PRAIRIE/LAWN
- 8. CONTEMPLATIVE GARDEN
- 9. PARKING





Massing – Central Courtyard



Massing – Bridge looking down to courtyard



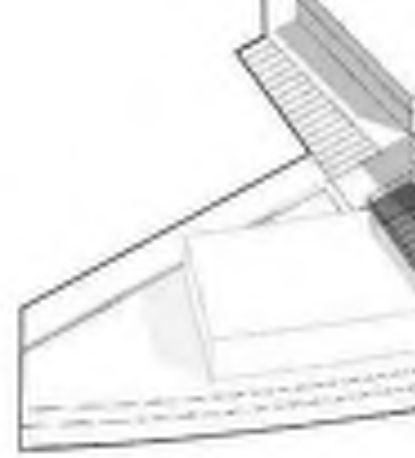




Section at Cafeteria - Architectural Relationship



Section at Cafeteria - Architectural Relationship

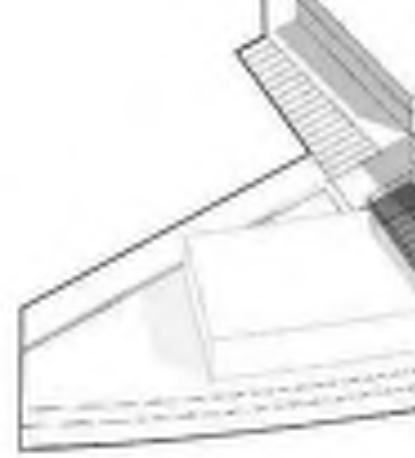


- **Extension of exterior ground plane** into the building using similar materials

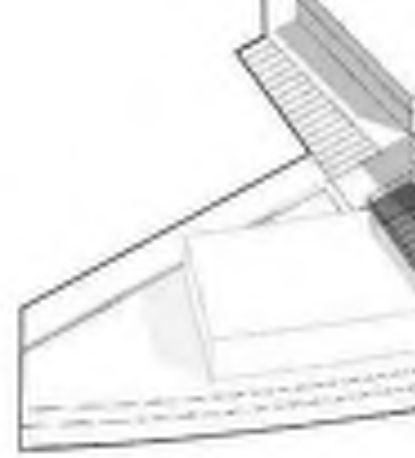
Section at Cafeteria - Architectural Relationship



- **Extension of exterior ground plane** into the building using similar materials
- **Continuity** of architectural geometry and materiality at key locations



Section at Cafeteria - Architectural Relationship



- **Extension of exterior ground plane** into the building using similar materials
- **Continuity** of architectural geometry and materiality at key locations
- **Experiential elements** that create connections between floors and utilize natural forms and materials

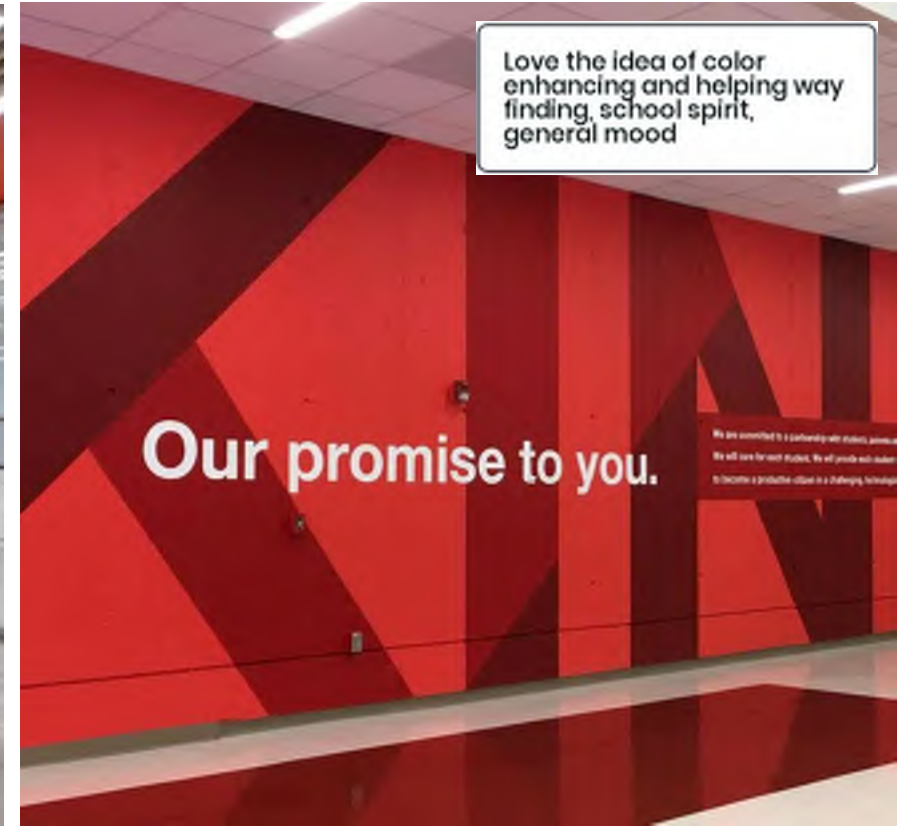
Cafeteria – learning stair and open flexible seating



Cafeteria – visual listening

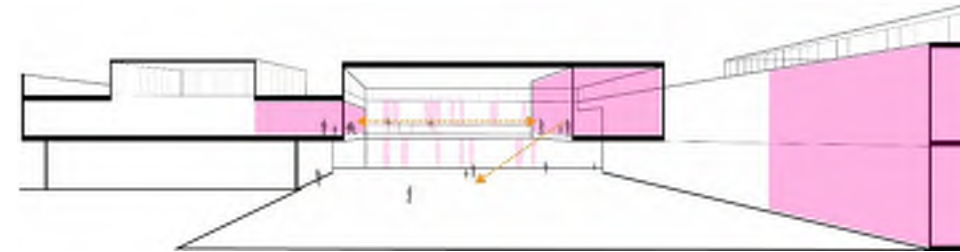


wayfinding is important with this age group as well as positive messaging



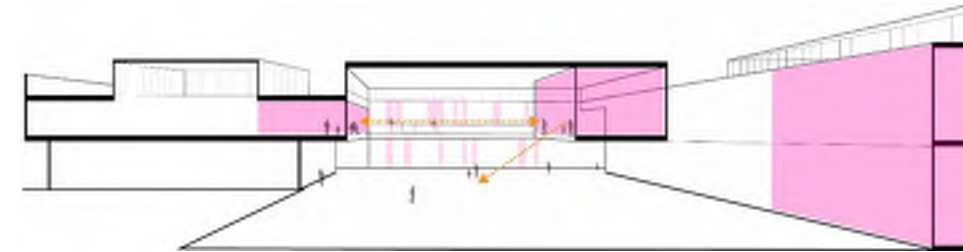
Love the idea of color enhancing and helping way finding, school spirit, general mood

Cafeteria – Education on Display



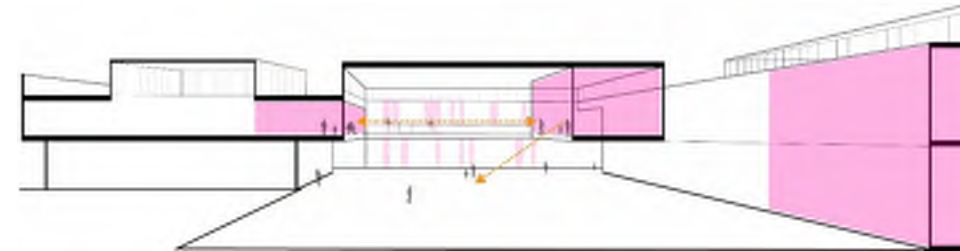
- Creating visual connections between floors and into active and learning spaces

Cafeteria – Education on Display



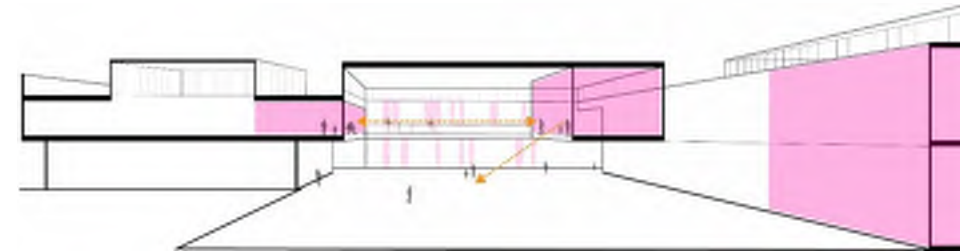
- Creating visual connections between floors and into active and learning spaces
- **Transparency**: direct visual access

Cafeteria – Education on Display



- Creating visual connections between floors and into active and learning spaces
 - **Transparency** : direct visual access
 - **Storytelling and messages** : school spirit, imagery

Cafeteria – Education on Display



- Creating visual connections between floors and into active and learning spaces
 - **Transparency** : direct visual access
 - **Storytelling and messages** : school spirit, imagery
 - **Texture** : creating variation in scale, maintaining a continuity in rhythm from outside in

Cafeteria – from level 02

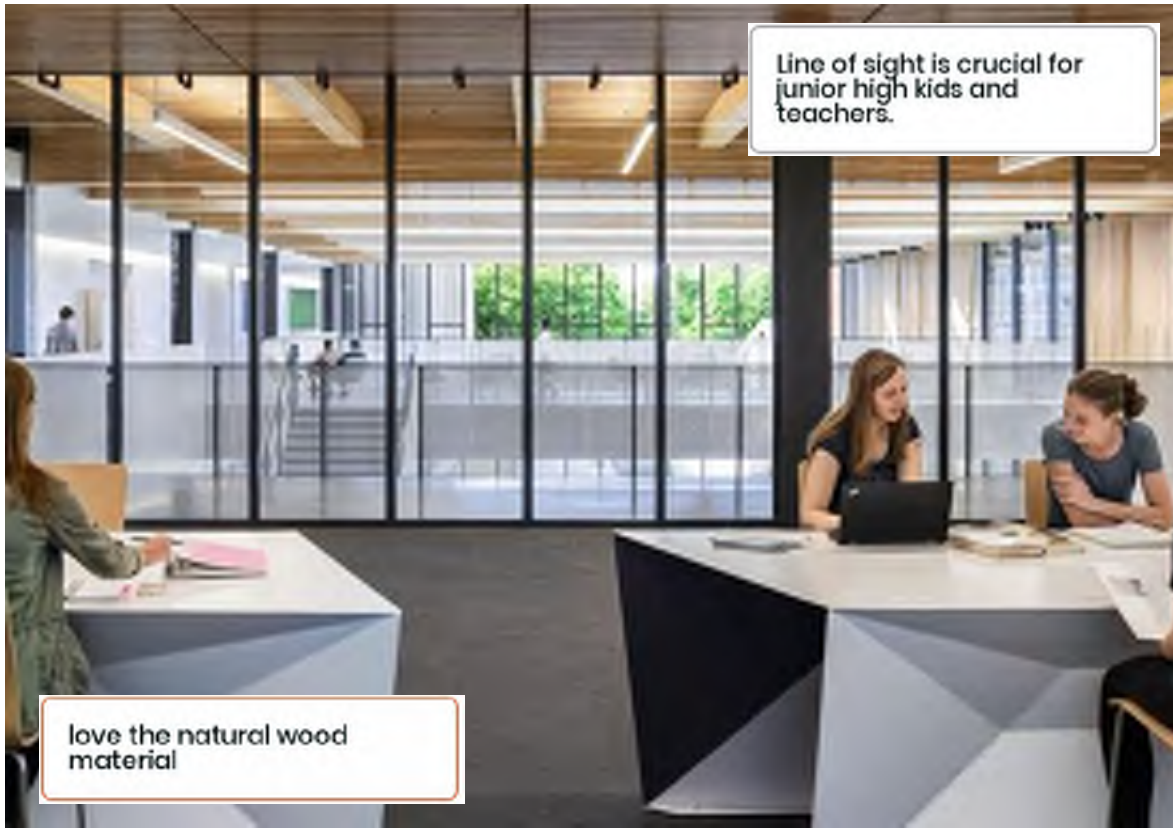


Cafeteria – visual listening

LOVE how open it is. The natural light is wonderful.



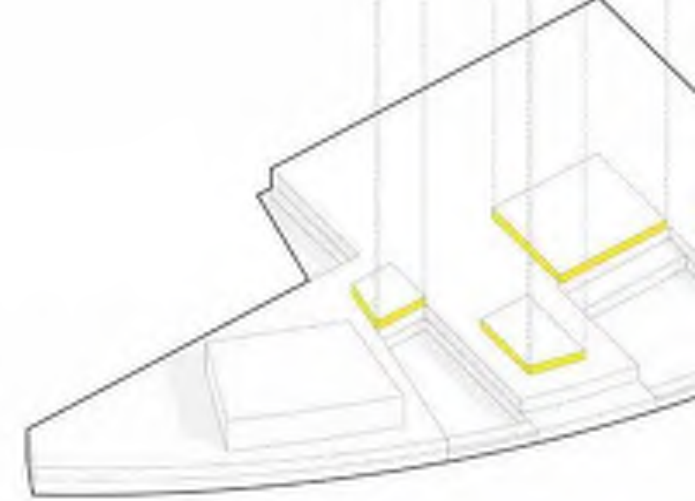
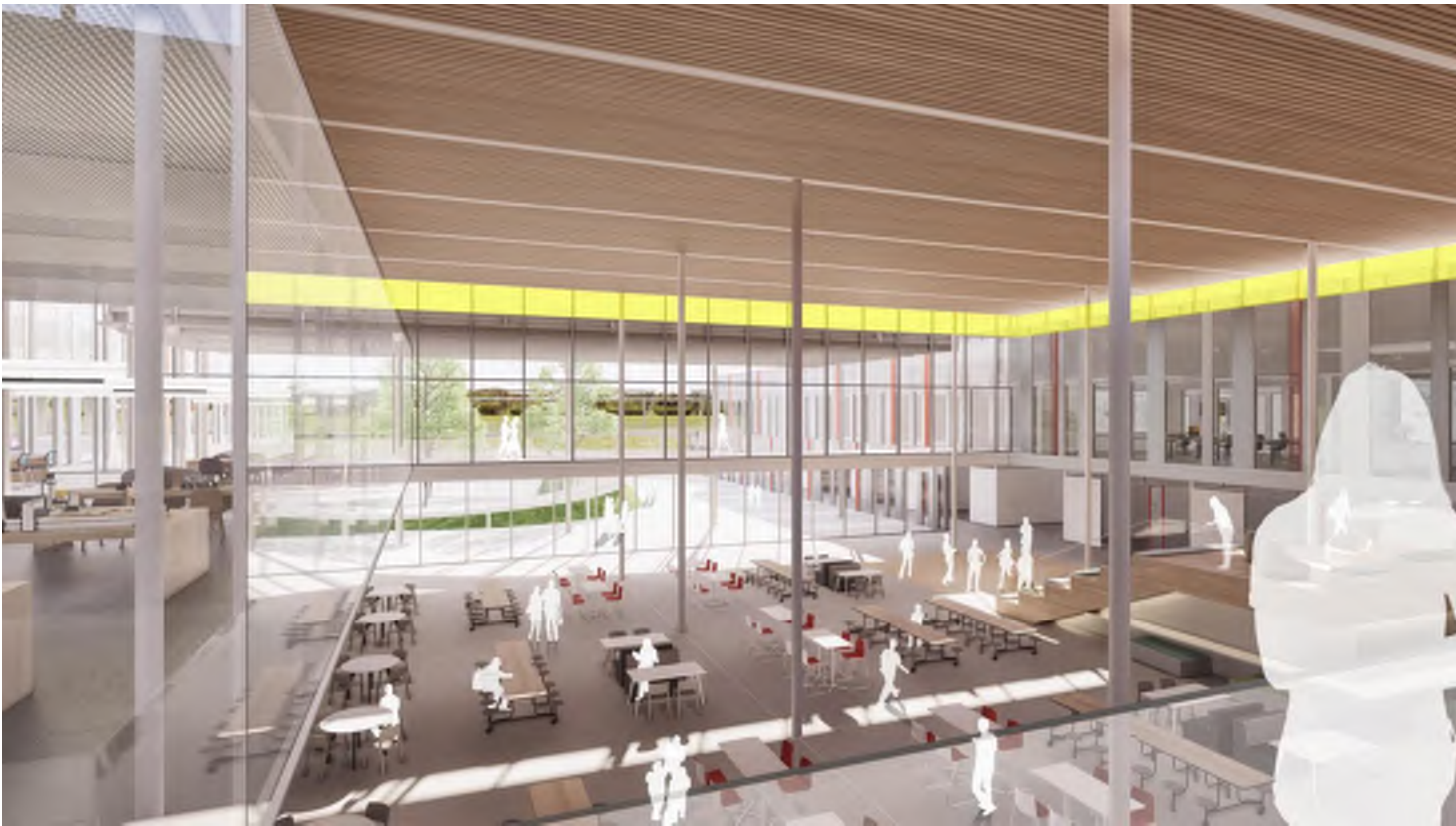
Line of sight is crucial for junior high kids and teachers.



love the natural wood material

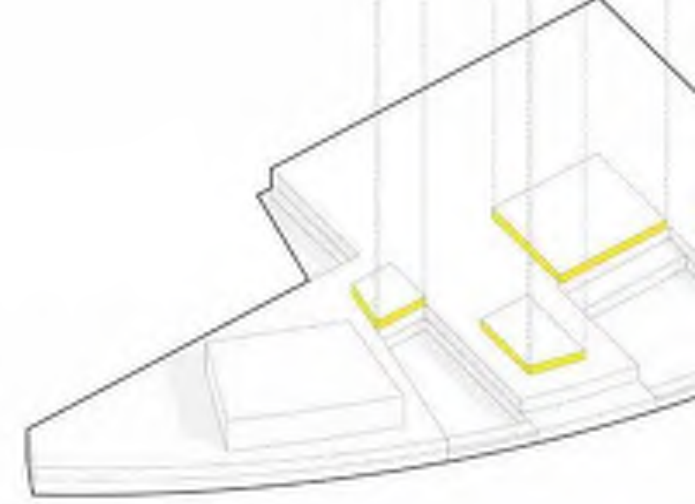
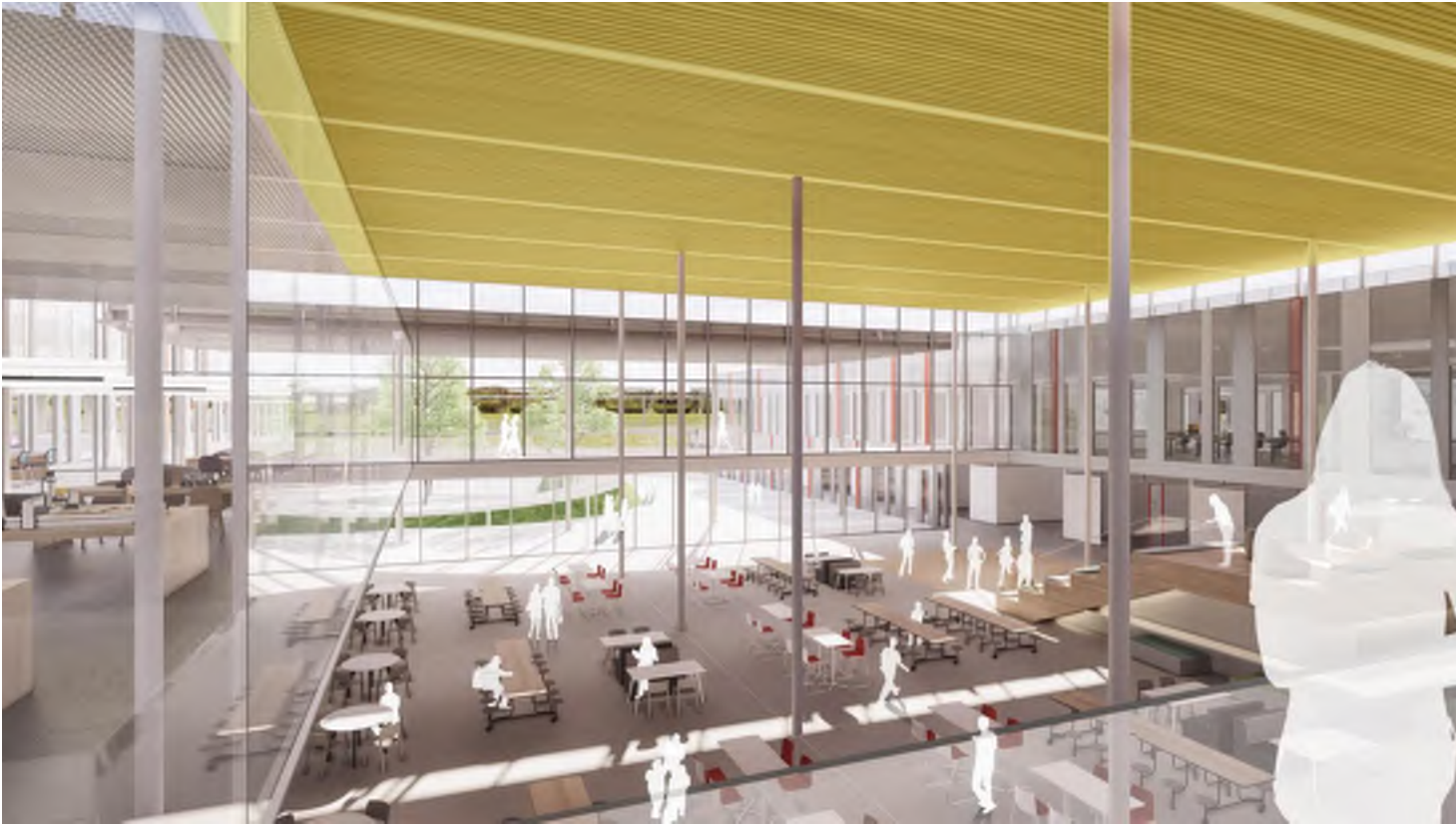


Cafeteria – architectural relationship



- Light boxes bringing in **natural light** and highlighting communal space types
 - Entry
 - Cafeteria and Media
 - Learning Communities

Cafeteria – architectural relationship



- Light boxes bringing in **natural light** and highlighting communal space types
 - Entry
 - Cafeteria and Media
 - Learning Communities
- **Natural materials** enhancing connection to the surrounding nature and “tree canopy context”

Media



Maker Space



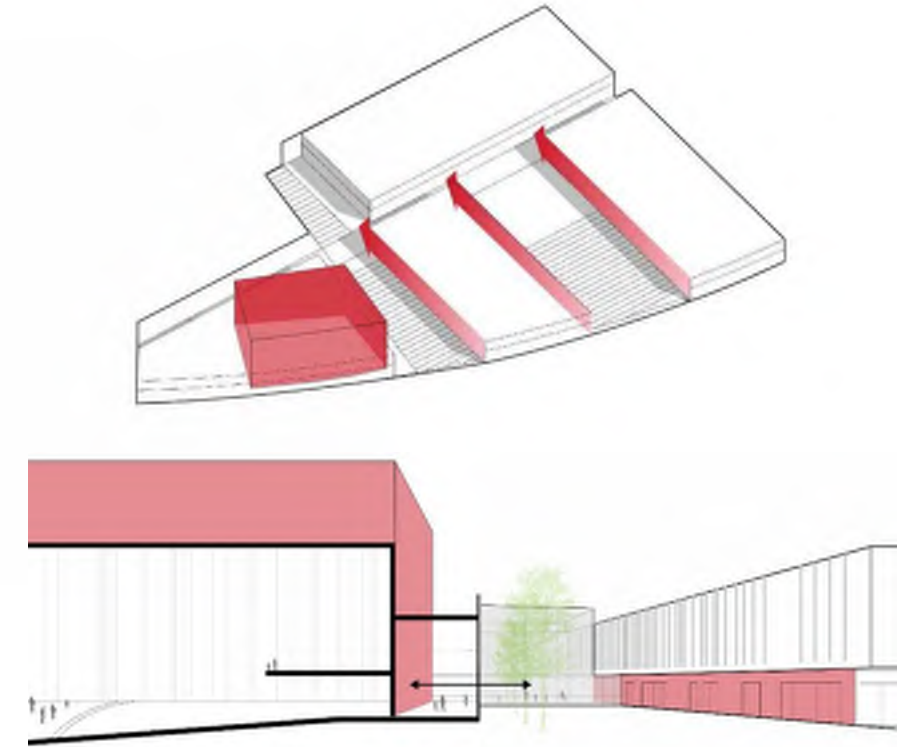
Academic



Performing Arts Lobby



Architectural Relationship – performing arts



- **Visible building form** into lobby
- Materiality and integration of light to create a **“billboard”**



THANK YOU!