

Lake Highlands Replacement Junior High School

PPC Meeting



Program Reminder

Classroom Counts

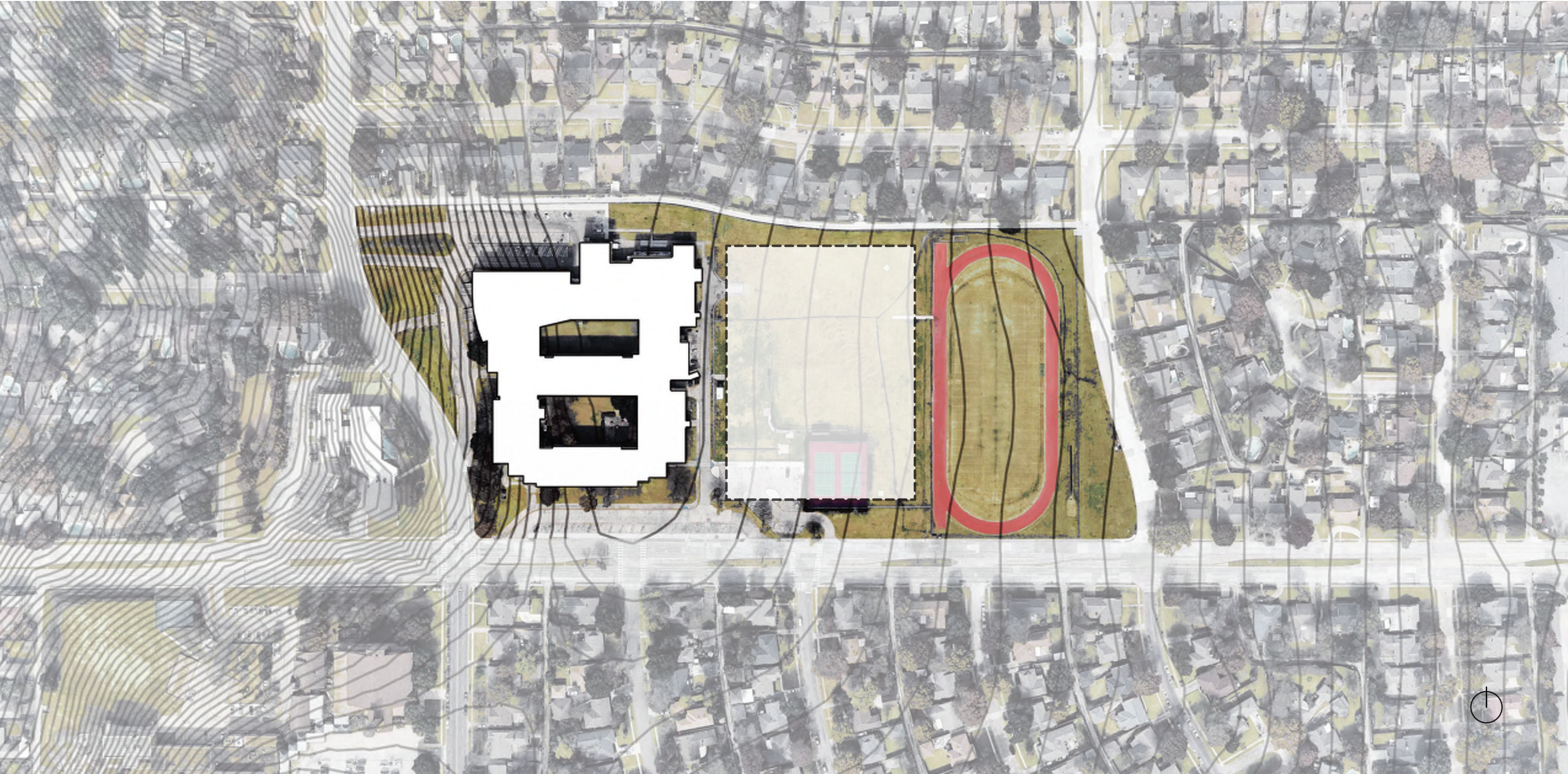
Description	Current Usage (900/1000 Students)	For 1,500 Students	Increase from current usage
ELA + Math + Social Studies	28	40	12
Science	6	8	2
ESL	1	2	1
LOTE (French, Spanish)	4	4	0
CTE Classrooms	2	3	1
Special Education	2	3	1
AVID	1	2	1
Total Classroom Counts	44	62	18

Program Roll Up

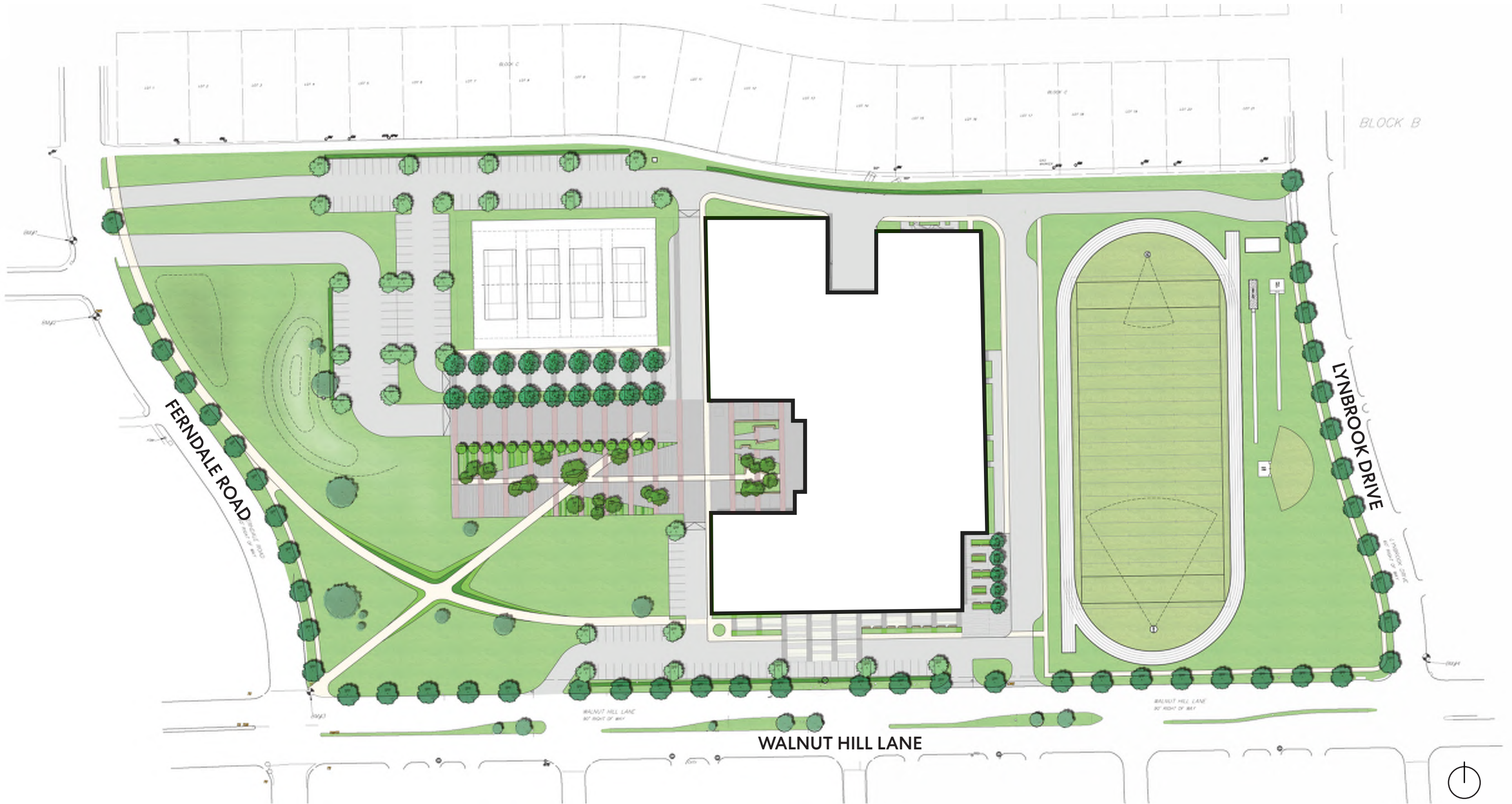
Classrooms Sub Totals	53		52,640	82,645
Academic Support Spaces Totals			3,570	5,605
SP. ED. and Interventions Totals	3		4,950	7,772
Career and Technical Education Totals	3		3,840	6,029
Fine Arts Total	7		14,540	22,828
Athletics and P. E. Totals	2		30,160	47,351
Media Center Totals	-		6,000	9,420
Food Service Totals			13,600	21,352
Administration Totals			4,820	7,567
Building Support Spaces Totals			6,130	9,624
Building Area Totals - Net and Gross Area	68	-	140,250	220,193

Site Plan

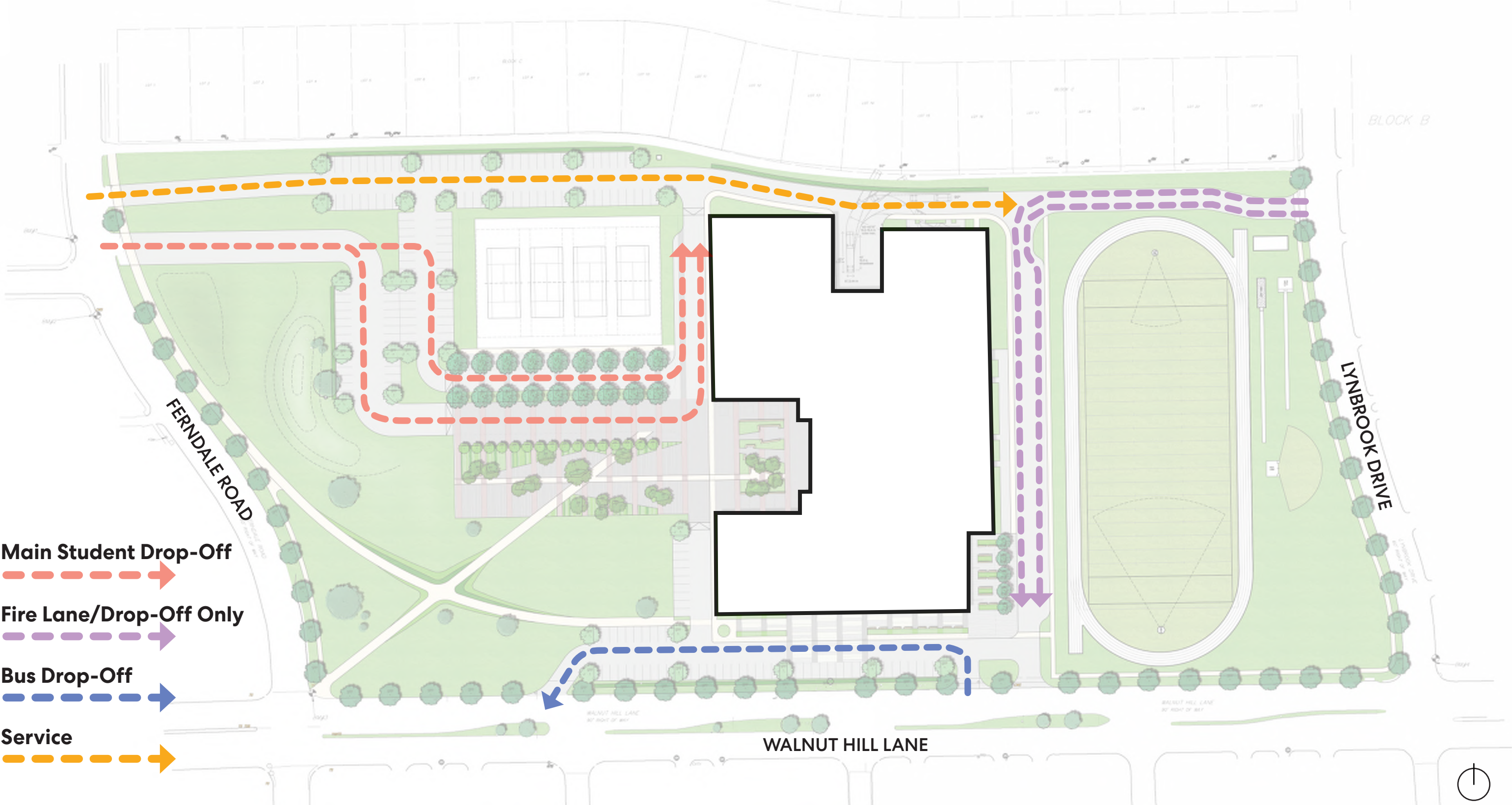
Existing Site



Site Plan



Site Circulation

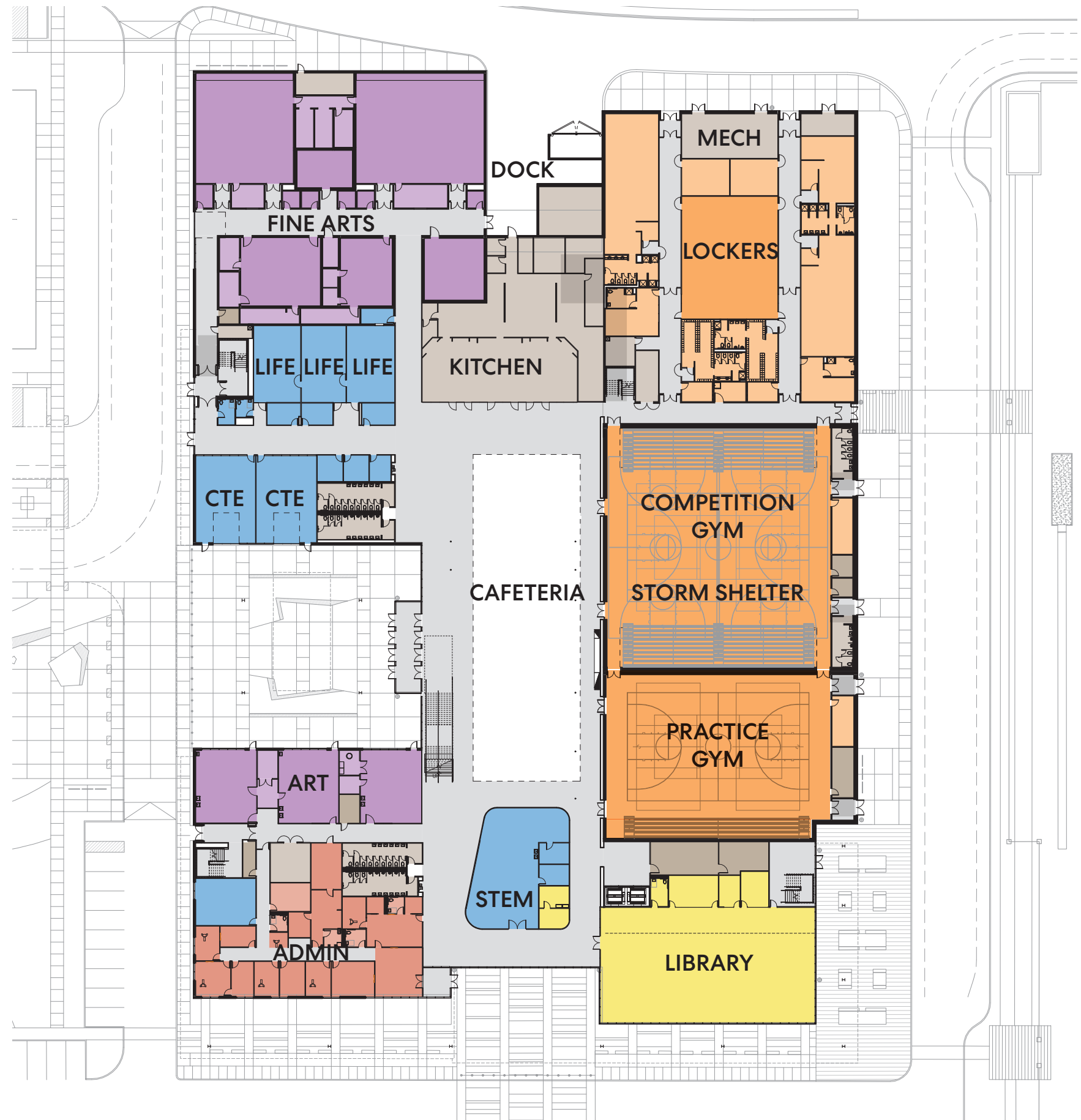


Floor Plans

Floor Plan - Level 01

Color Key

- = Fine Arts
- = Athletics
- = Administration
- = Library
- = Academics
- = Dining / Kitchen
- = Support
- = Circulation



Floor Plan - Level 02

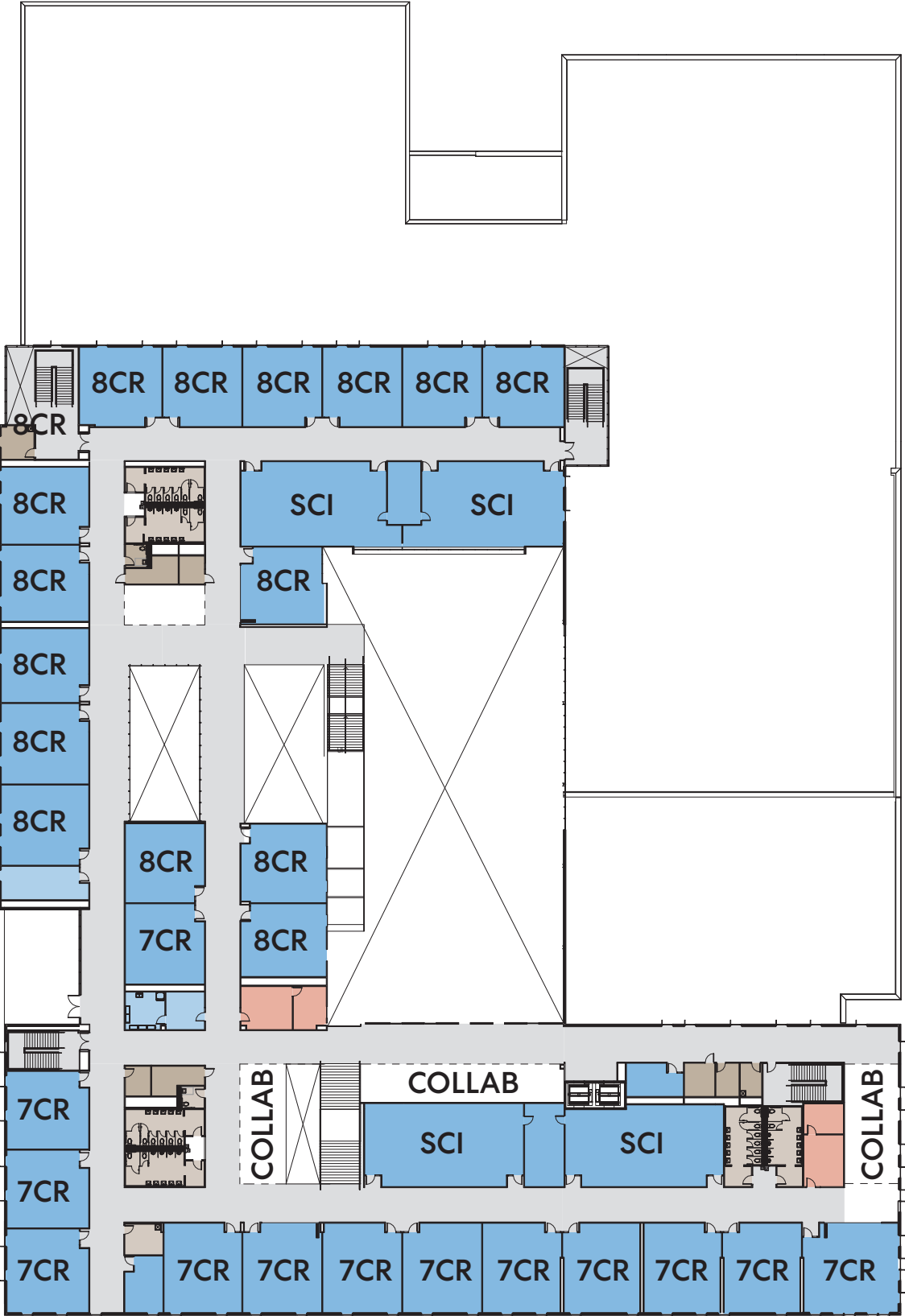


Color Key

- = Fine Arts
- = Athletics
- = Administration
- = Collaboration
- = Academics
- = Dining / Kitchen
- = Support
- = Circulation



Floor Plan - Level 03

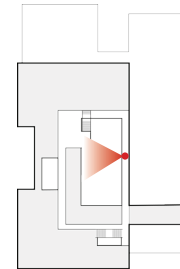


Color Key

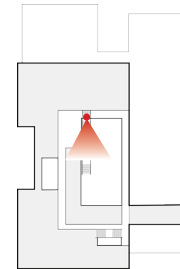
- = Fine Arts
- = Athletics
- = Administration
- = Collaboration
- = Academics
- = Dining / Kitchen
- = Support
- = Circulation



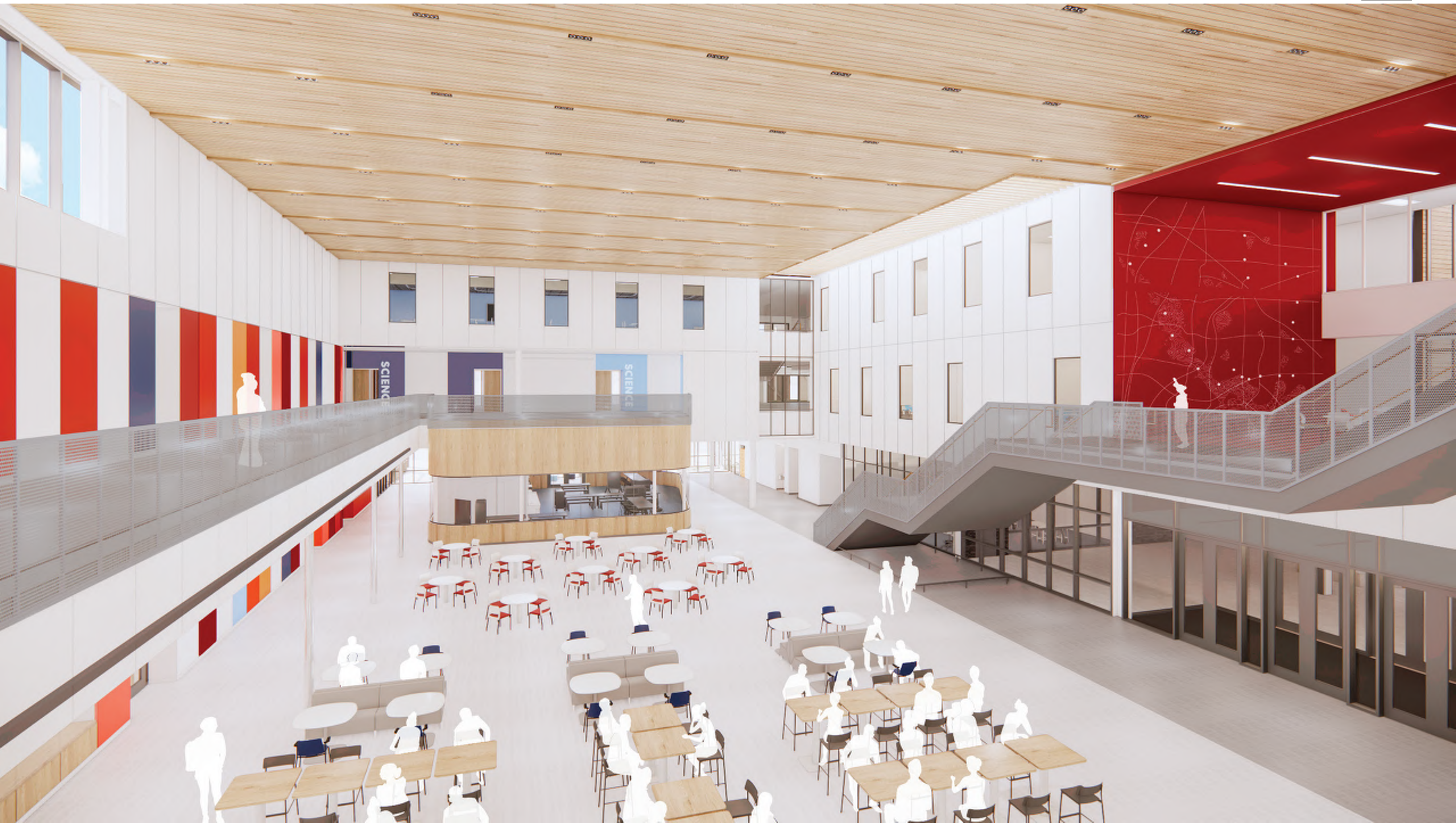
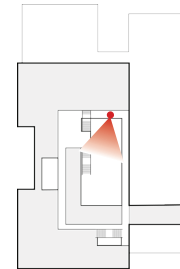
Atrium



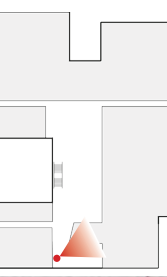
Atrium



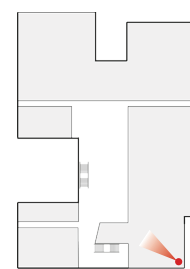
Atrium



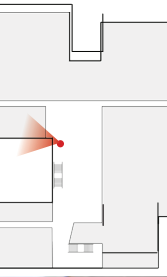
Entry | STEM



Media Center



Group Learning



Walnut Hill



South Entry



LAKE HIGHLANDS
MIDDLE SCHOOL

Pedestrian Plaza



Aerial



Thank you!