



STULTS ROAD ELEMENTARY SCHOOL

RICHARDSON ISD | BRW ARCHITECTS



WELCOME!



Go Cougars!
#thestultsway

Mission

To create a community where all students connect, learn, grow and succeed: socially, emotionally, and academically.

Vision

To be a positive place of collaboration, commitment and love for all.

IT'S NICE TO MEET YOU!



Lisa Lamkin, FAIA, LE Fellow



Anne Hildenbrand, AIA, ALEP



Kenneth Smith, Assoc. AIA



Claudia Varela



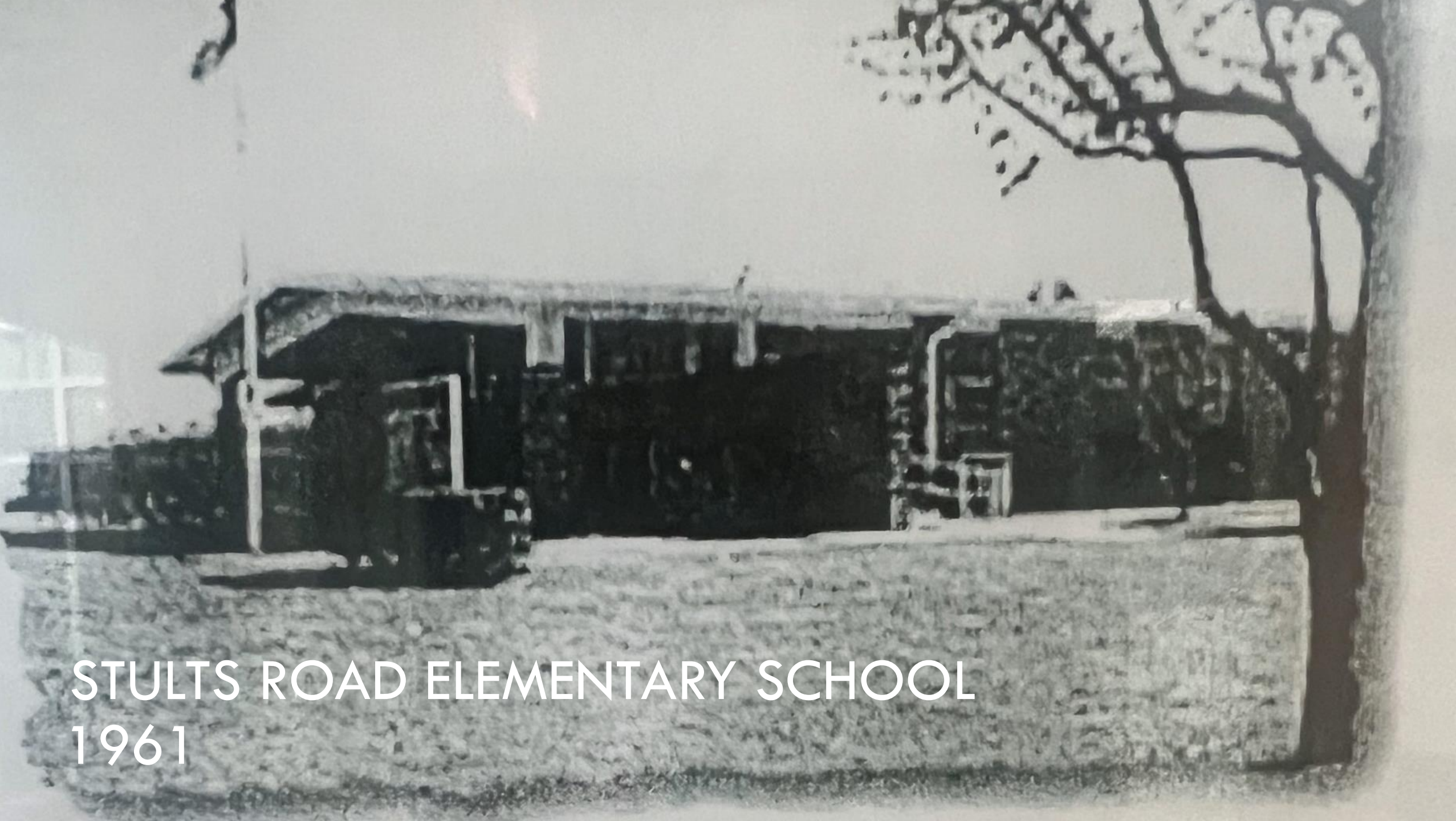
Sophia Novak



Kathy Lee

WHY ARE WE HERE?

Serving students and communities for over 160 years, Richardson ISD recognizes renovating existing schools delivers long-term benefits and is a critical step in extending communities the opportunity to invest in its future. With an emphasis on educational excellence and innovation, the district's pledge to provide all students with the very best in education is grounded in the belief that not only the student but all stakeholders; **educators, parents, and the community** play an important role in student achievement. **THANK YOU for being here!**



STULTS ROAD ELEMENTARY SCHOOL
1961

WHAT ARE YOUR GOALS?

Enhance curb appeal

Site Security

Additional staff parking

Remove lockers

Modernize corridor lighting & finishes

Improve aesthetics of classroom

Wayfinding

Larger music room

Flexible furniture

Outdoor Learning

Upgraded Restrooms

Improved Accessibility

Modern finishes (flooring, walls, ceilings)

Improved parent drop off

More storage

More multifunctional & community spaces

WHAT'S IMPORTANT TO YOU?

Welcome and Secure Entry

Hallways

Learning Spaces



EXIT

WELCOME AND SECURE ENTRY

HALLWAYS





LEARNING SPACES

“ Creativity involves breaking out of established patterns in order to look at things in a different way.

You can analyze the past, but you need to design the future. ”

Dr. Edward de Bono
dedicated his life to inspiring, encouraging and enabling
us to be better and more creative thinkers.

Stults Road Elementary



ANTICIPATED SCHEDULE

Subject to Change:

| | |
|------------------------|---------------------------|
| Design Phase | March 2023 – January 2024 |
| Construction Start | Summer 2024 |
| Substantial Completion | Summer 2025 |