



STULTS ROAD
ELEMENTARY
SCHOOL

8700

FIRE LANE NO PARKING

STULTS ROAD ELEMENTARY SCHOOL

RICHARDSON ISD | BRW ARCHITECTS

YOUR BRW TEAM



Lisa Lamkin, FAIA, LE Fellow



Anne Hildenbrand, AIA, ALEP



Kenneth Smith, Assoc. AIA



Claudia Varela



Sophia Novak



Kathy Lee

BRW ARCHITECTS
FOCUSED ON WHAT MATTERS.

WHAT DO YOU LOVE MOST ABOUT YOUR SCHOOL?

Students
and Staff

Supportive
parents

Library

Sense of
community

RECAP OF PPC #1



Project budget \$10M to include hard and soft construction costs



Areas of major renovation were identified

Secure Entry Vestibule
Hallways and Restrooms
Learning spaces



PPC was divided into 3 groups and participated in 2 activities

A vision board activity to specify likes and dislikes. Participants were asked to make special notes to further explain
Top 5 priorities

HALLWAYS VISION BOARDS



Image 1

- Bright colors
- The color and quotes (vivid)

Image 2

- Enclosed glass preferred

Image 3

- Love the openness of the space

Image 4 NO COMMENTS

Image 5

- Windows in the hallways create a more open space
- Bright floors

Image 6

- Great hub area
- Students need spaces outside of the classroom they can use, I like it!

HALLWAYS VISION BOARDS



Image 7

- Enclosed glass area

Image 8

- Do not like the window – unless the students in the class cannot see out the window

Image 9

- Need color, do not like
- Love the natural soft wood

Image 10

- If lockers are removed, the classroom needs a place for books, binders for the older students who change classes
- More colorful – colors that stimulate learning
- Love the concept

Image 11

- Like the shapes, but need more colors that stimulate learning
- Like this but would like the addition of seating on the outer part of the windows and smoked windows

Image 12

- No window is good, bright colors
- Perhaps tackable?

LEARNING SPACES VISION BOARDS



Image 1

- Pre-K seating
- I like the use of hallways for learning space
- Functional learning space

Image 2

- Limiting, kids might get hurt

Image 3

- I like the extended space but with a glass wall where I can still see students

Image 4

- Feels like a doctor's waiting office
- Needs more eyes on supervision
- Likes pull-out option, relaxing, nice windows

Image 5 NO COMMENTS

Image 6

- Outdoors, nice
- Being able to open windows
- Love it to be used as an outdoor classroom
- Outdoor area for lunch

LEARNING SPACES VISION BOARDS



Image 7

- Love storage – need storage
- Like bright colors

Image 8

- Don't include rocks
- Not interactive, too closed off
- I would like to see a garden area
- Good idea for the courtyards
- Reference another RISD elementary that has an archaeology/garden area

Image 9

- Desks that are like whiteboards
- Like tables, no to rolling chairs
- STEM room?
- Technology lab – within library?
- Science Lab
- Lighting according to learning needs. Ex: blue for testing

LEARNING SPACES VISION BOARDS (cont.)



Image 10

- Add glass windows to the library (like below)

Image 11

- Like the grass area
- Like it but would like to see an outdoor classroom that teachers can use (no chalkboards)

Image 12

- Don't include high stools
- Would like a STEM/Innovation space
- Want a science lab (hands on)
 - Pre-k and up
 - Science = Literacy
 - One lab for pre-k – 2
 - One lab for 3 - 6

ACTIVITY 2 – TOP 5 PRIORITIES

GROUP ONE

1. Bathrooms
2. AC & Heat redone
3. Flooring, walls, and ceilings
4. Improve aesthetics of rooms
5. Outdoor learning
6. Fix parking lot

GROUP TWO

1. Classroom – flexible spaces
2. Need break-out spaces
3. Modernize corridor lighting and finishes
4. Adult/teacher restrooms added at least 1 per hallway inside current student restrooms
5. Additional staff parking

GROUP THREE

1. Secure vestibule
2. Modern finishes
3. Learning spaces
4. Longer parents drop off/stacking (reference Mark Twain ES)
5. Enhanced exteriors

COMMON PRIORITIES

Enhanced curb appeal

Secure Vestibule

Additional staff/improved parking

Controlled traffic flow

Modernize corridor lighting & finishes

Modern finishes (flooring, walls, ceilings)

Improve aesthetics of classroom

Flexible furniture/spaces

Outdoor Learning

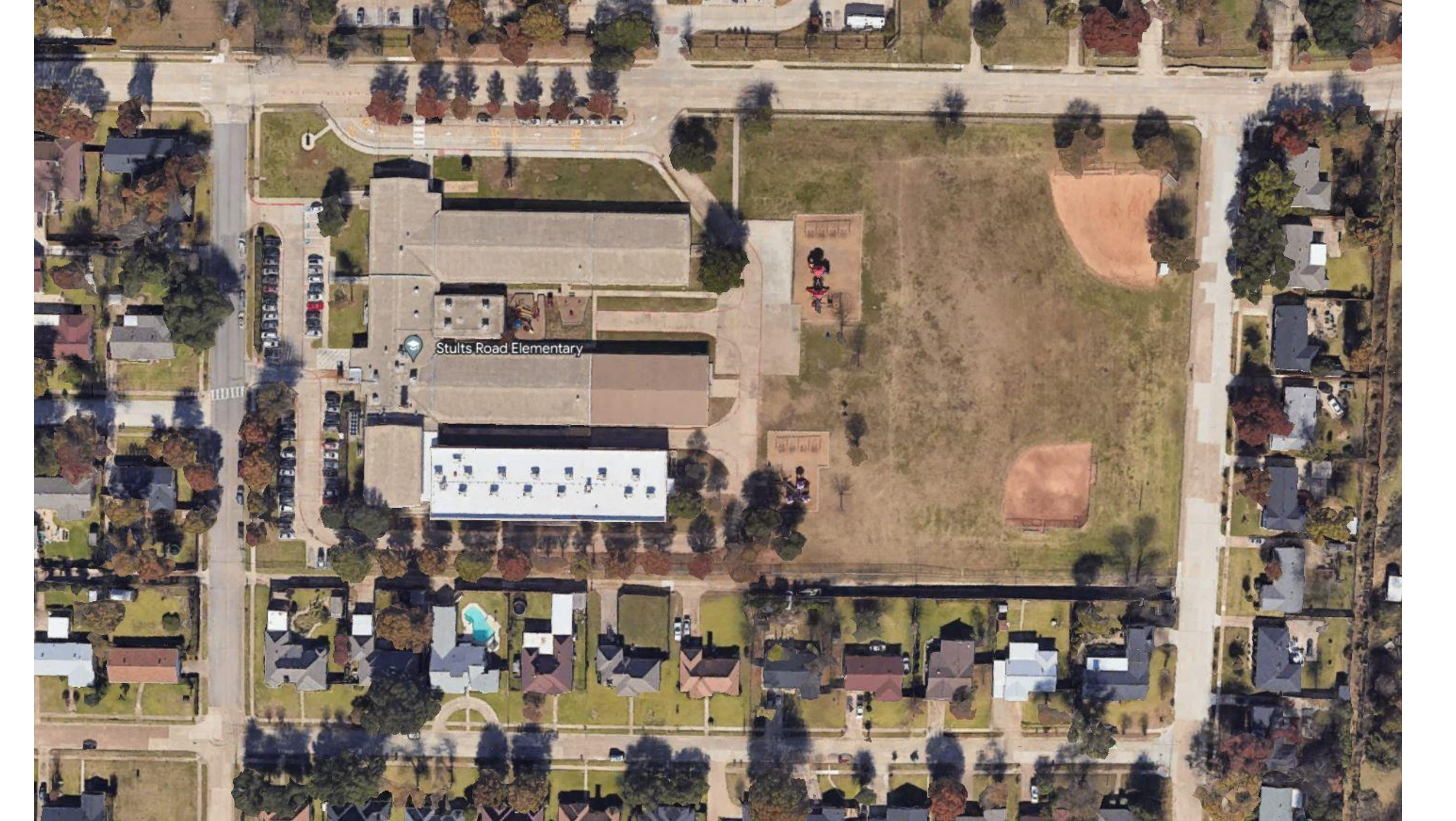
Breakout spaces/activity zones

Upgraded Restrooms

More storage

Wayfinding

Stults Road Elementary



SITE PLAN

KEY

-  NEW RAMP
-  NEW FENCE
-  OUTDOOR LEARNING

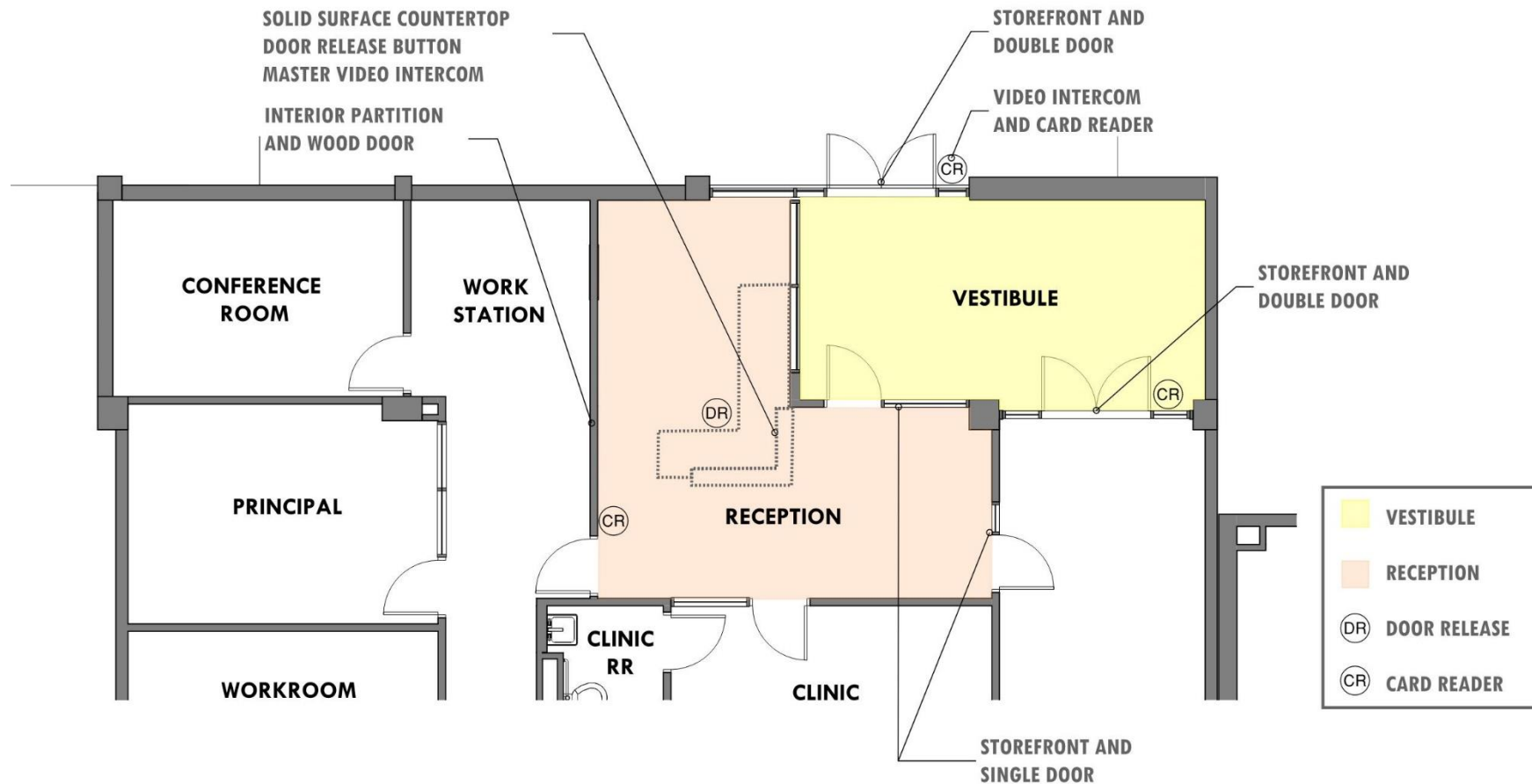






STULTS ROAD
ELEMENTARY SCHOOL

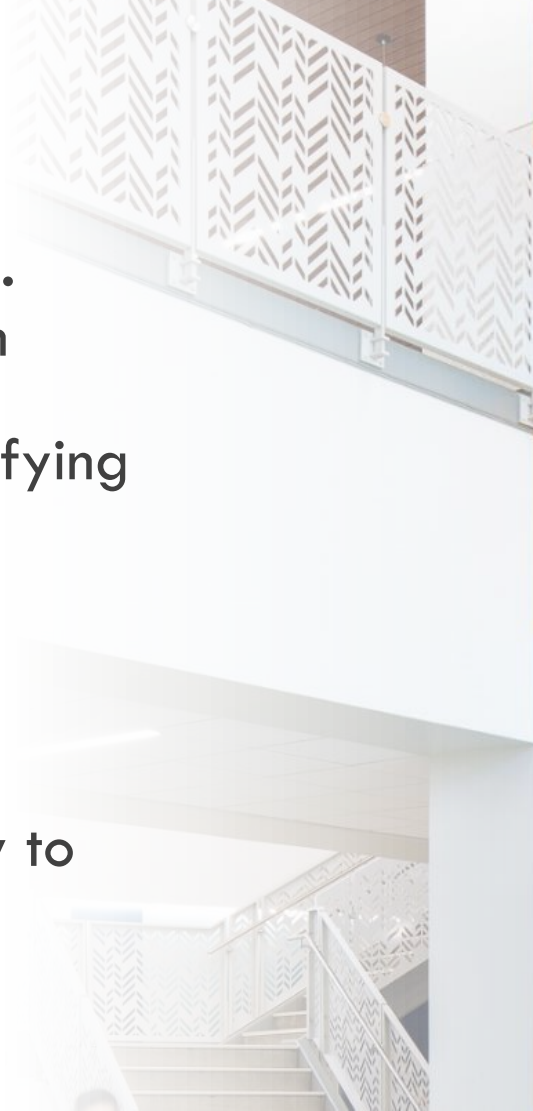
SECURE VESTIBULE



WAYFINDING

Improve our sense of security and comfort...

- Common materials in transition spaces
- Clear signage identifying rooms and areas
- Landmarks such as graphics
- Color theming
- Transparency
- Furniture that is easy to navigate



NEIGHBORHOOD THEME IDEAS



Animal Option

- Robin
- Bluebird
- Canary
- Parrot
- Crane
- Swan



Plant Option

- Oak
- Bluebonnet
- Sunflower
- Indian
Paintbrush
- Clover
- Mountain
Laurel



Biome Option

- Prairie
- Ocean
- Lake
- Beach
- Forest
- Mountains

HALLWAYS



ROBIN
PRAIRIE
OAK
WOLF



BLUEBIRD
OCEAN
BLUEBONNET
WHALE



CANARY
LAKE
SUNFLOWER
BOBCAT



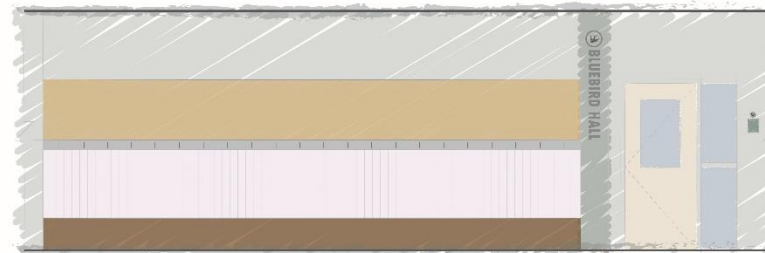
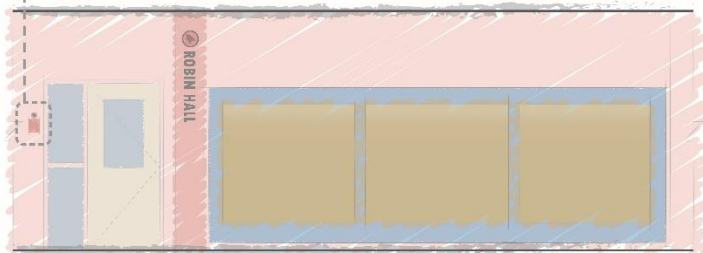
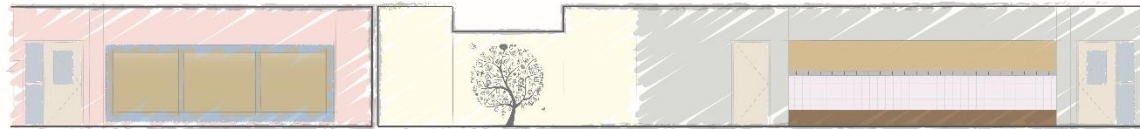
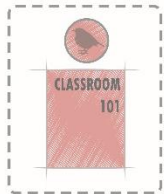
PARROT
MOUNTAIN
CLOVER
EAGLE



CRANE
FOREST
INDIAN PAINTBRUSH
BISON

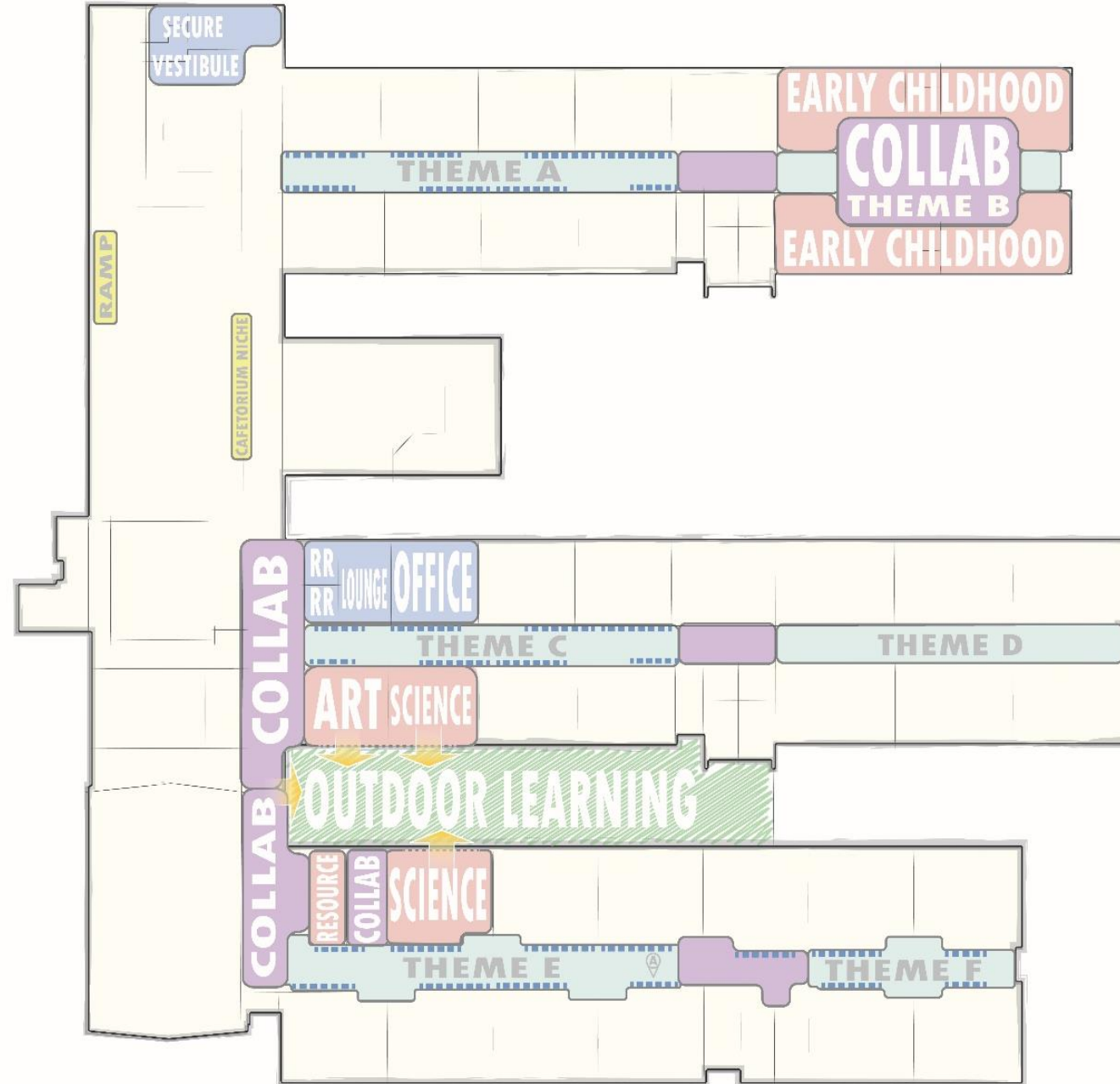


SWAN
BEACH
MOUNTAIN LAUREL
BEAR



PINNABLE SURFACES
BENCHES
BACKPACK HOOKS
CLEAR SIGNAGE

FLOOR PLAN



HALLWAYS



HALLWAYS





LEARNING SPACES

TYPICAL CLASSROOM





FURNITURE TYPE OPTIONS



FURNITURE TYPE OPTIONS



OUTDOOR LEARNING



OUTDOOR LEARNING



OUTDOOR LEARNING



ANTICIPATED SCHEDULE

Subject to Change:

Design Phase	March 2023 – January 2024
Construction Start	Summer 2024
Substantial Completion	Summer 2025